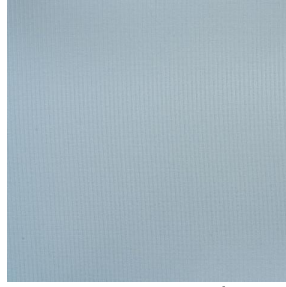


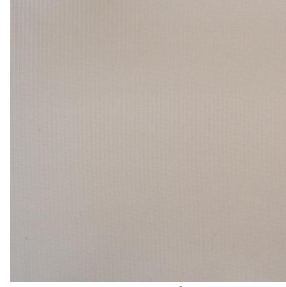
# 3141 ALPHA



3141 ALPHA Blanc 01



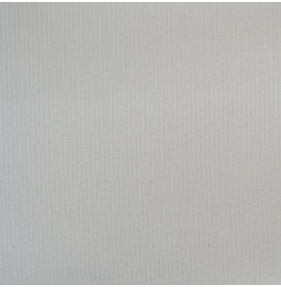
3141 ALPHA Ciel 07



3141 ALPHA Chanvre 72



3141 ALPHA Mousse 92

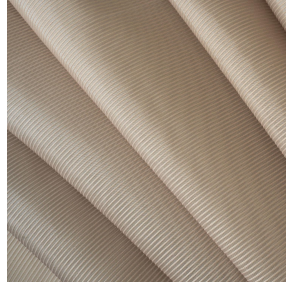
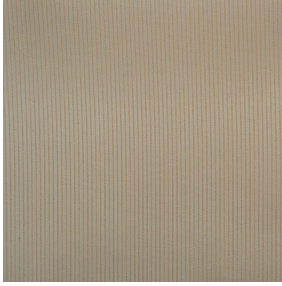


3141 ALPHA Gris 97



(Headquarters) SOTEXPRO - 510 route de Montchal - 42360 PANISSIÈRES - FRANCE - +33 4 77 27 60 60

*Non-contractual photos and colors - Indicative fitting - Fitting may vary depending on support selected*



# 3141 ALPHA Beige 63

Sheer with interesting acoustic performance. Its weaving configuration has been specifically designed to reduce the sound reverberation in a room thanks to its sound absorption performance when used as curtains meanwhile keeping a good light transparency. The 3141 alpha is made of 80% of recycled polyester in order to reduce its carbon foot print.

## Technical properties



Flame retardant



Acoustic



Sheer








Recycled fabrics

Applications Roman blinds - Panel curtains - Curtains

Composition 80 % recycled polyester FR / 20 % polyester FR

Weight 170 g/m<sup>2</sup> Width 300 cm

Fabric direction Room High Direction Fitting ↔ cm ↓ cm

Maintenance advice     

Labels France Terre Textile (R016)

Certifications OEKO-TEX STANDARD 100 Recyclé (CQ 1006/2)

Minimum order 1 linear(s) meter(s)

## Technical characteristics

Flame retardant	M1
Acoustic	Noise reduction coefficient (NRC) : <b>0.70</b> Weighted sound absorption coefficient (a <sub>w</sub> ) : <b>0.65</b> Acoustic absorption class (a <sub>w</sub> ) : <b>C</b>
Transparent veil	Yes
Resilience	Lightfastness (units Class/8) <b>3</b>



(Headquarters) SOTEXPRO - 510 route de Montchal - 42360 PANISSIÈRES - FRANCE - +33 4 77 27 60 60

Non-contractual photos and colors - Indicative fitting - Fitting may vary depending on supports selected