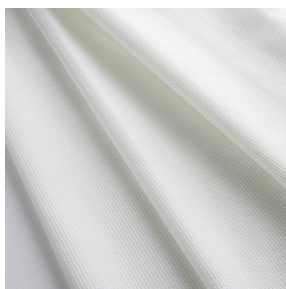


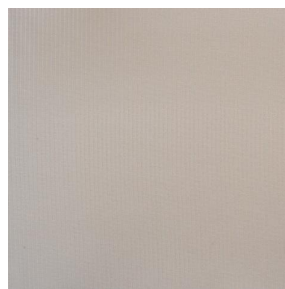
3141 ALPHA



3141 ALPHA Blanc 01



3141 ALPHA Beige 63



3141 ALPHA Chanvre 72



3141 ALPHA Mousse 92

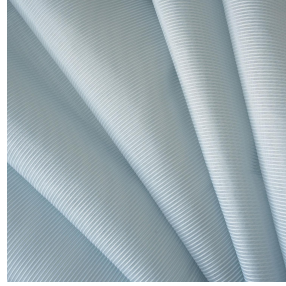
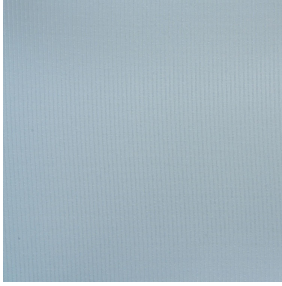


3141 ALPHA Gris 97



(Headquarters) SOTEXPRO - 510 route de Montchal - 42360 PANISSIÈRES - FRANCE - +33 4 77 27 60 60

Non-contractual photos and colors - Indicative fitting - Fitting may vary depending on support selected



3141 ALPHA Ciel 07

Sheer with interesting acoustic performance. Its weaving configuration has been specifically designed to reduce the sound reverberation in a room thanks to its sound absorption performance when used as curtains meanwhile keeping a good light transparency. The 3141 alpha is made of 80% of recycled polyester in order to reduce its carbon foot print.

Technical properties



Flame retardant



Acoustic



Sheer








Recycled fabrics

Applications Roman blinds - Panel curtains - Curtains

Composition 80 % recycled polyester FR / 20 % polyester FR

Weight 170 g/m² **Width** 300 cm

Fabric direction Room High Direction **Fitting** ↔ cm ↓ cm

Maintenance advice     

Labels France Terre Textile (R016)

Certifications OEKO-TEX STANDARD 100 Recyclé (CQ 1006/2)

Minimum order 1 linear(s) meter(s)

Technical characteristics

| | |
|------------------|--|
| Flame retardant | M1 |
| Acoustic | Noise reduction coefficient (NRC) : 0.70 Weighted sound absorption coefficient (a _w) : 0.65 Acoustic absorption class (a _w) : C |
| Transparent veil | Yes |
| Resilience | Lightfastness (units Class/8) 3 |



(Headquarters) SOTEXPRO - 510 route de Montchal - 42360 PANISSIÈRES - FRANCE - +33 4 77 27 60 60

Non-contractual photos and colors - Indicative fitting - Fitting may vary depending on supports selected