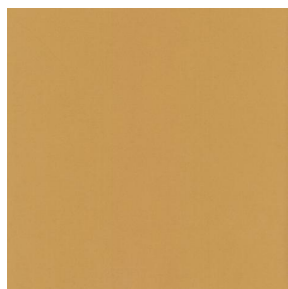
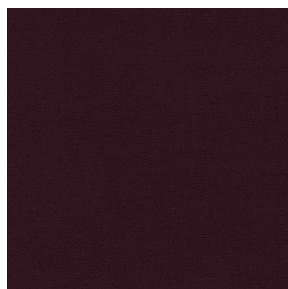


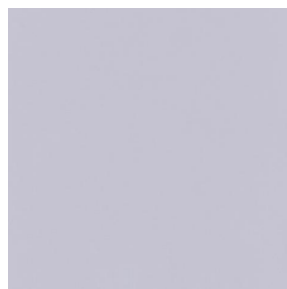
ASTRAL



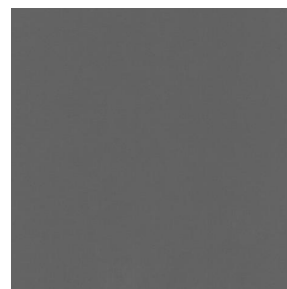
ASTRAL abricot 08



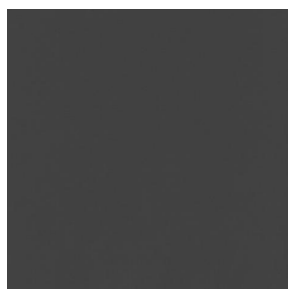
ASTRAL aubergine 27



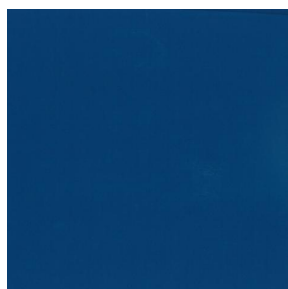
ASTRAL perle 96



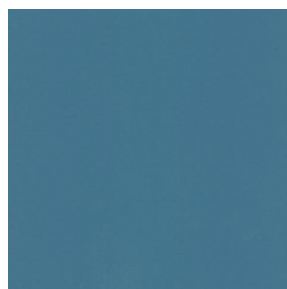
ASTRAL sienne 29



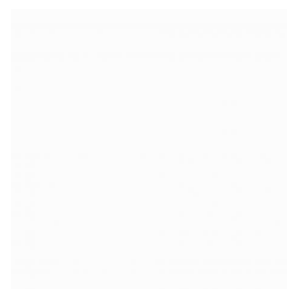
ASTRAL anthracite 38



ASTRAL océan 91



ASTRAL arctique 58



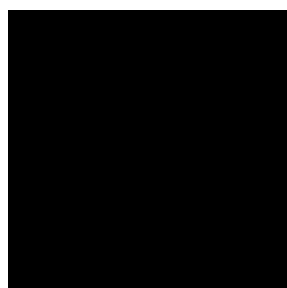
ASTRAL blanc 01



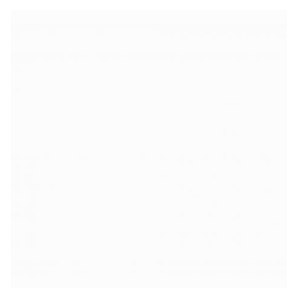
ASTRAL crème 02



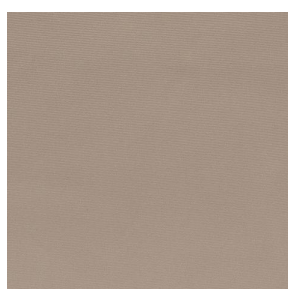
ASTRAL taupe 95



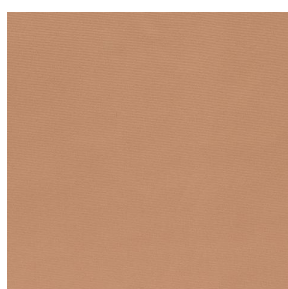
ASTRAL noir 10



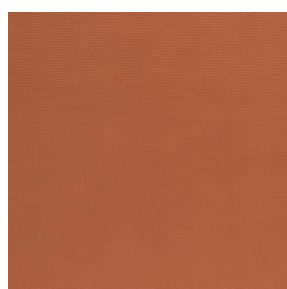
ASTRAL BPI 00



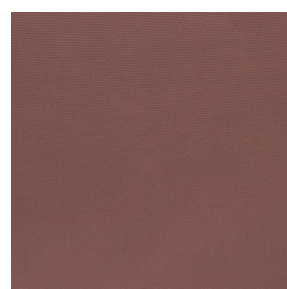
ASTRAL Beige 63



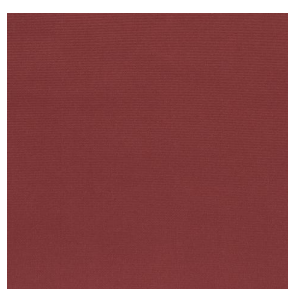
ASTRAL Safran 49



ASTRAL Terre 107



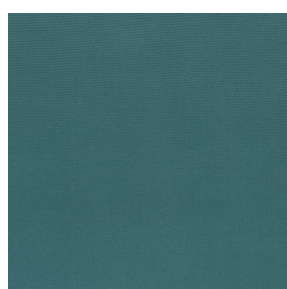
ASTRAL Chamois 111



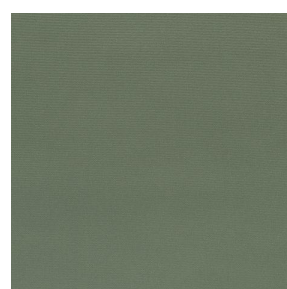
ASTRAL Bordeaux 04



ASTRAL Ecume 82



ASTRAL Sapin 126



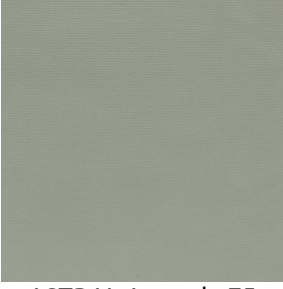
ASTRAL Kaki 148



(Headquarters) SOTEXPRO - 510 route de Montchal - 42360 PANISSIÈRES - FRANCE - +33 4 77 27 60 60
(Showroom) Le LAB' SOTEXPRO - 4 rue du Mail - 75002 PARIS - FRANCE

Non-contractual photos and colors - Indicative fitting - Fitting may vary depending on support selected

ASTRAL



ASTRAL Amande 75



(Headquarters) SOTEXPRO - 510 route de Montchal - 42360 PANISSIÈRES - FRANCE - +33 4 77 27 60 60
(Showroom) Le LAB' SOTEXPRO - 4 rue du Mail - 75002 PARIS - FRANCE

Non-contractual photos and colors - Indicative fitting - Fitting may vary depending on support selected

ASTRAL mastic 48

This plain fabric blocks out light very effectively and is available in a wide variety of colours.

Technical properties



Thermal

Applications Roman blinds - Panel curtains - Curtains

Composition 100% polyester with white flocked acrylic backing

Weight 280 g/m² Width 280 cm

Fabric direction Room high or standard direction Fitting ↔ cm ↓ cm

Maintenance advice

Minimum order 25 linear(s) meter(s)

Technical characteristics

Flame retardant

EN13773 : 2003 Class 1 / BS 5867 TYPE C / B1 / IMO PASS / UNI 8456 / 9174 Classe Uno

Optical index

Light reflexion : 82 %

Light absorption : 18 %

Light transmission : 0 %

Thermal index

Solar reflexion : 74 %

Solar absorption : 26 %

Solar transmission : 0 %

UV transmission : 0 %

Gtot : Gt 33 % Fc 55 %

Resilience

Lightfastness (units Class/8) 5

Dimensional Stability (%)

Warp -0,5

Weft 0

Breaking Elongation

Warp 26

Weft 15

Breaking load (daN)

Warp 62

Weft 31



(Headquarters) SOTEXPRO - 510 route de Montchal - 42360 PANISSIÈRES - FRANCE - +33 4 77 27 60 60
(Showroom) Le LAB' SOTEXPRO - 4 rue du Mail - 75002 PARIS - FRANCE

Non-contractual photos and colors - Indicative fitting - Fitting may vary depending on supports selected