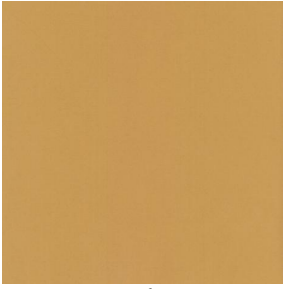
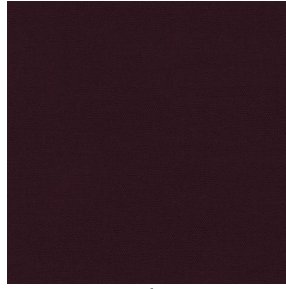


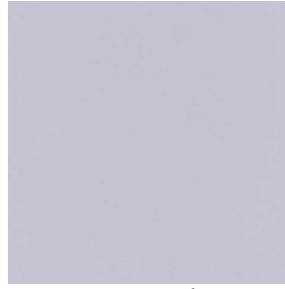
# ASTRAL



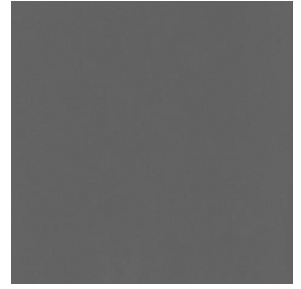
ASTRAL abricot 08



ASTRAL aubergine 27



ASTRAL perle 96



ASTRAL sienne 29



ASTRAL anthracite 38



ASTRAL océan 91



ASTRAL arctique 58



ASTRAL blanc 01



ASTRAL mastic 48



ASTRAL crème 02



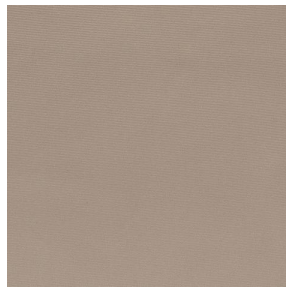
ASTRAL taupe 95



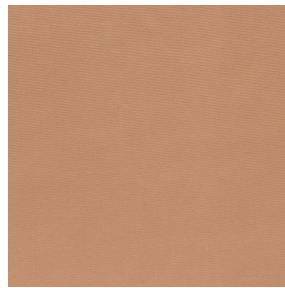
ASTRAL noir 10



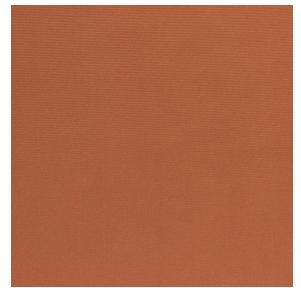
ASTRAL BPI 00



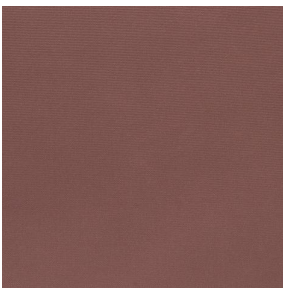
ASTRAL Beige 63



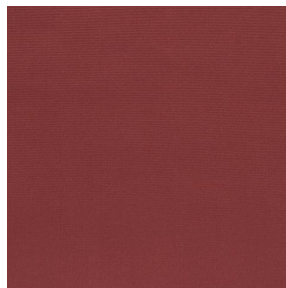
ASTRAL Safran 49



ASTRAL Terre 107



ASTRAL Chamois 111



ASTRAL Bordeaux 04



ASTRAL Ecume 82



ASTRAL Kaki 148



(Headquarters) SOTEXPRO - 510 route de Montchal - 42360 PANISSIÈRES - FRANCE - +33 4 77 27 60 60  
(Showroom) Le LAB' SOTEXPRO - 4 rue du Mail - 75002 PARIS - FRANCE

*Non-contractual photos and colors - Indicative fitting - Fitting may vary depending on support selected*

# ASTRAL



ASTRAL Amande 75



(Headquarters) SOTEXPRO - 510 route de Montchal - 42360 PANISSIÈRES - FRANCE - +33 4 77 27 60 60  
(Showroom) Le LAB' SOTEXPRO - 4 rue du Mail - 75002 PARIS - FRANCE

*Non-contractual photos and colors - Indicative fitting - Fitting may vary depending on support selected*



# ASTRAL Sapin 126

This plain fabric blocks out light very effectively and is available in a wide variety of colours.

## Technical properties






Thermal

Applications Roman blinds - Panel curtains - Curtains

Composition 100% polyester with white flocked acrylic backing

Weight 280 g/m<sup>2</sup> Width 280 cm

Fabric direction Room high or standard direction Fitting ↔ cm ↓ cm

Maintenance advice     

Minimum order 25 linear(s) meter(s)

## Technical characteristics

Flame retardant

EN13773 : 2003 Class 1 / BS 5867 TYPE C / B1 / IMO PASS / UNI 8456 / 9174 Classe Uno

Optical index

Light reflexion : **82 %**

Light absorption : **18 %**

Light transmission : **0 %**

Thermal index

Solar reflexion : **74 %**

Solar absorption : **26 %**

Solar transmission : **0 %**

UV transmission : **0 %**

Gtot : **Gt 33 % Fc 55 %**

Resilience

Lightfastness (units Class/8) **5**

Dimensional Stability (%)

Warp **-0.5**

Weft **0**

Breaking Elongation

Warp **26**

Weft **15**

Breaking load (daN)

Warp **62**

Weft **31**



(Headquarters) SOTEXPRO - 510 route de Montchal - 42360 PANISSIÈRES - FRANCE - +33 4 77 27 60 60  
(Showroom) Le LAB' SOTEXPRO - 4 rue du Mail - 75002 PARIS - FRANCE

Non-contractual photos and colors - Indicative fitting - Fitting may vary depending on supports selected