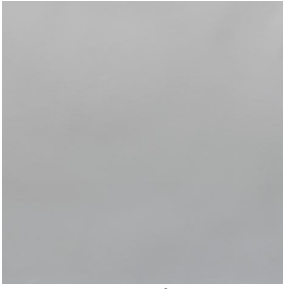
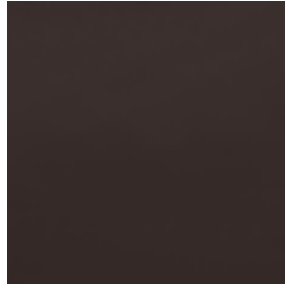


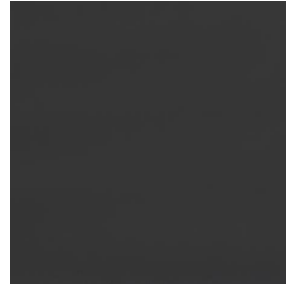
BELORA



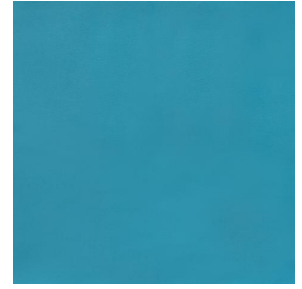
BELORA Blanc 01



BELORA Taupe 95



BELORA Acier 18



BELORA Turquoise 53



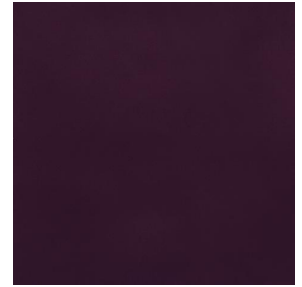
BELORA Mousse 92



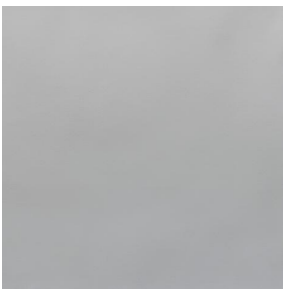
BELORA Fuchsia 33



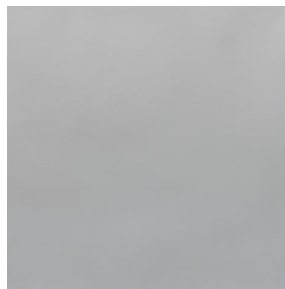
BELORA Rouge 22



BELORA Prune 84



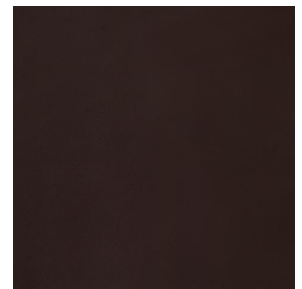
BELORA BPI 00



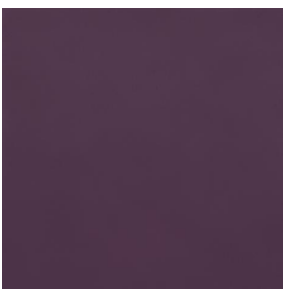
BELORA BPI 00



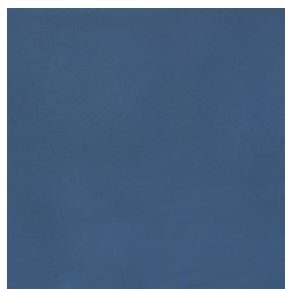
BELORA Pourpre 146



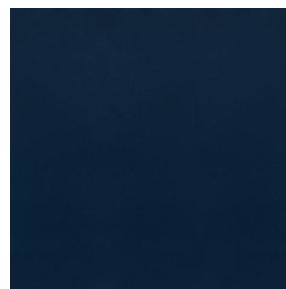
BELORA Marron 102



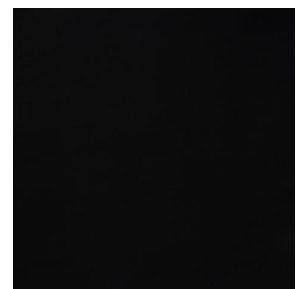
BELORA Mauve 68



BELORA Océan 91



BELORA Marine 25



BELORA Noir 10

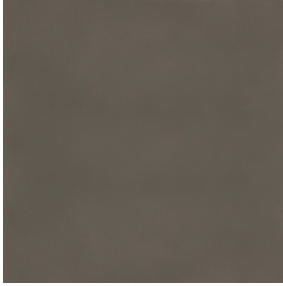


BELORA Crème 02



(Headquarters) SOTEXPRO - 510 route de Montchal - 42360 PANISSIÈRES - FRANCE - +33 4 77 27 60 60
(Showroom) Le LAB' SOTEXPRO - 4 rue du Mail - 75002 PARIS - FRANCE

Non-contractual photos and colors - Indicative fitting - Fitting may vary depending on support selected



BELORA Beige 90

This plain dimout fabric comes in a range of several colours. It does not have an M1 fire rating.

Technical properties



Thermal



Acoustic

Applications Roman blinds - Lining - Curtains

Composition 100% polyester

Weight 260 g/m² Width 290 cm

Fabric direction Room high or standard direction Fitting ↔ cm ↓ cm

Maintenance advice

Certifications OEKO-TEX STANDARD 100 (CQ 1006/1)

Minimum order 30 linear(s) meter(s)

Technical characteristics

Flame retardant	NF 12952	
Acoustic	Noise reduction coefficient (NRC) :	0.88
	Weighted sound absorption coefficient (a _w) :	0.90
	Acoustic absorption class (a _w) :	A
Optical index	Light reflexion :	55 %
	Light absorption :	45 %
	Light transmission :	0 %
Thermal index	Solar reflexion :	53 %
	Solar absorption :	47 %
	Solar transmission :	0 %
	UV transmission :	0 %
	Gtot :	Gt 40 % Fc 67 %
Resilience	Lightfastness (units Class/8)	6
	Dimensional Stability (%)	
	Warp	0
	Weft	0
	Breaking Elongation	
	Warp	17
	Weft	27
	Breaking load (daN)	
	Warp	87
	Weft	110



(Headquarters) SOTEXPRO - 510 route de Montchal - 42360 PANISSIÈRES - FRANCE - +33 4 77 27 60 60
(Showroom) Le LAB' SOTEXPRO - 4 rue du Mail - 75002 PARIS - FRANCE

Non-contractual photos and colors - Indicative fitting - Fitting may vary depending on supports selected