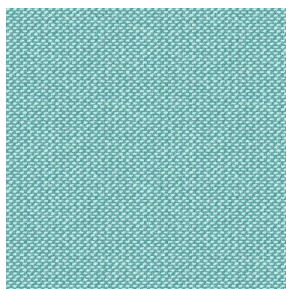
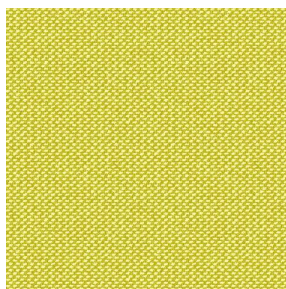


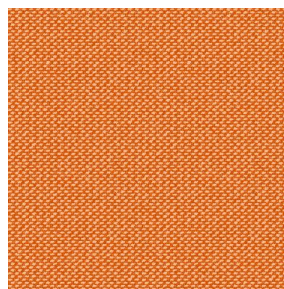
BIOSAT METIS 2162



BIOSAT METIS 2162
lagon 110



BIOSAT METIS 2162
Bergamotte 121

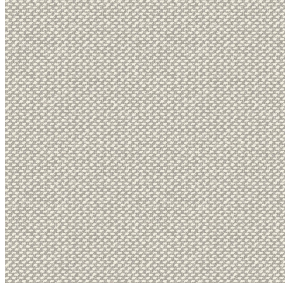


BIOSAT METIS 2162
Citrouille 136



(Headquarters) SOTEXPRO - 510 route de Montchal - 42360 PANISSIÈRES - FRANCE - +33 4 77 27 60 60
(Showroom) Le LAB' SOTEXPRO - 4 rue du Mail - 75002 PARIS - FRANCE

Non-contractual photos and colors - Indicative fitting - Fitting may vary depending on support selected



BIOSAT METIS 2162 Lin 11

Combine aesthetics and well-being with high-tech fibres for antibacterial and antiviral action : Kills 99% of bacteria (tested on staphylococcus aureus et klebsiella pneumoniae). BIOSAT was tested on 2 virus strains: the enveloped human coronavirus HCoV-229 (similar to Covid-19) and the non-enveloped Murine Norovirus (similar to the gastroenteritis virus). For the former, BIOSAT kills nearly 98% of the virus in less than 2 hours and for the latter, 73% in less than 2 hours.

Technical properties



Flame retardant



Thermal



Antibacterial



Antiviral



Acoustic

Applications Roman blinds - Panel curtains - Curtains - Partition curtain

Composition polyester/polyester FR bioactive

Weight 135 g/m² **Width** 280 cm

Fabric direction Room high or standard direction **Fitting** ↔ cm ↓ cm

Maintenance advice     

Labels France Terre Textile (R016)

Certifications OEKO-TEX STANDARD 100 (CQ 1006/1)

Minimum order 25 linear(s) meter(s)

Technical characteristics

| | |
|-----------------|--|
| Flame retardant | M1 / B1 / IMO PASS / UNI 8456 / 9174 Classe Uno |
| Acoustic | Noise reduction coefficient (NRC) : 0.72 |
| Antibacterial | Yes |
| Optical index | Light reflexion : 57 % Light absorption : 16 % Light transmission : 27 % |
| Thermal index | Solar reflexion : 53 % Solar absorption : 19 % Solar transmission : 28 % UV transmission : 2 % Gtot : Gt 40 % Fc 68 % |
| Resilience | Lightfastness (units Class/8) 6 Pilling 5 Dimensional Stability (%) Warp -0.5 Weft -0.5 Martindale (Cycles) 14000 Breaking Elongation Warp 43 Weft 37 Breaking load (daN) Warp 42 Weft 129 |



(Headquarters) SOTEXPRO - 510 route de Montchal - 42360 PANISSIÈRES - FRANCE - +33 4 77 27 60 60
(Showroom) Le LAB' SOTEXPRO - 4 rue du Mail - 75002 PARIS - FRANCE

Non-contractual photos and colors - Indicative fitting - Fitting may vary depending on supports selected