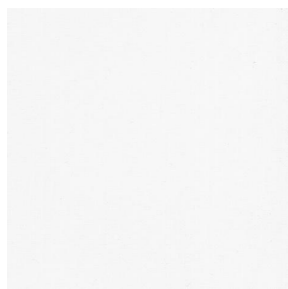
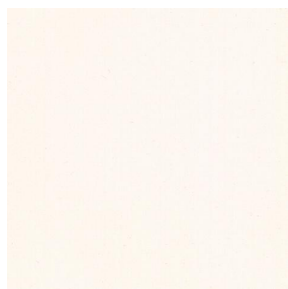


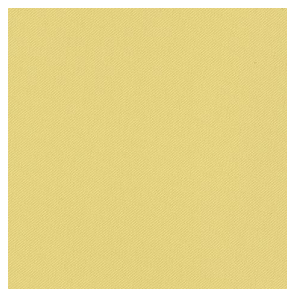
BIOSAT



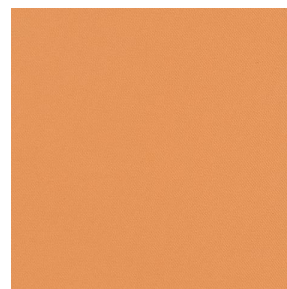
BIOSAT Blanc 01



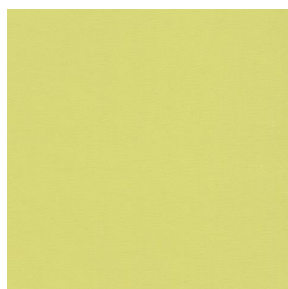
BIOSAT Ivoire 02



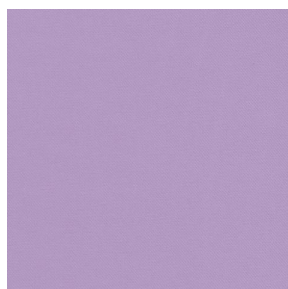
BIOSAT Blé 26



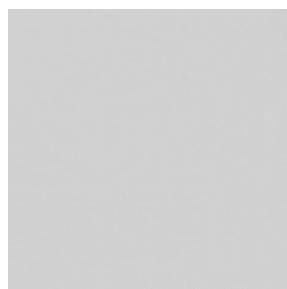
BIOSAT Mandarine 06



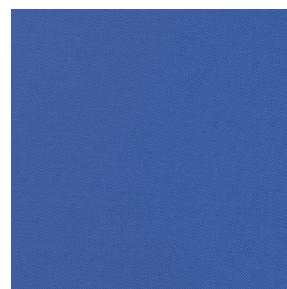
BIOSAT Anis 62



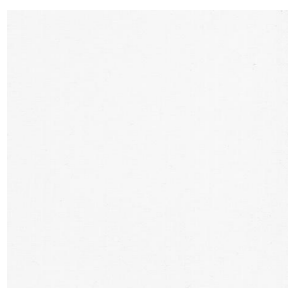
BIOSAT Lilas 19



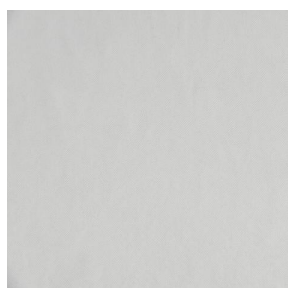
BIOSAT Glacier 43



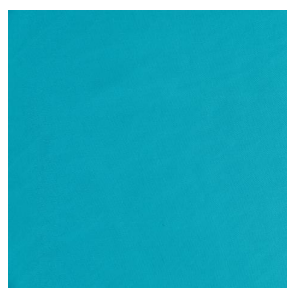
BIOSAT Pervenche 13



BIOSAT BPI 00



BIOSAT Lin 11



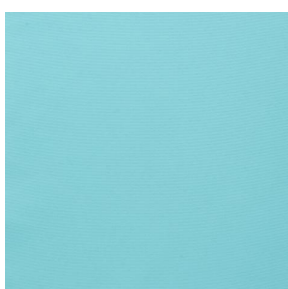
BIOSAT Lagon 110



BIOSAT Arctique 58



BIOSAT Viole 105



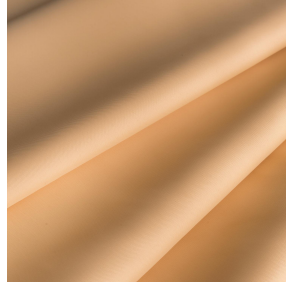
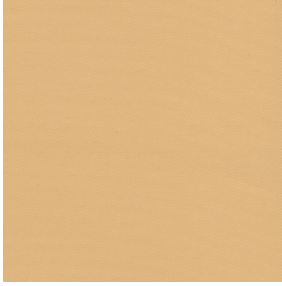
BIOSAT Pacifique 54



sotexpro

(Headquarters) SOTEXPRO - 510 route de Montchal - 42360 PANISSIÈRES - FRANCE - +33 4 77 27 60 60
(Showroom) Le LAB' SOTEXPRO - 4 rue du Mail - 75002 PARIS - FRANCE

Non-contractual photos and colors - Indicative fitting - Fitting may vary depending on support selected



BIOSAT Safran 05

Combine aesthetics and well-being with high-tech fibres for antibacterial and antiviral action : Kills 99% of bacteria (tested on staphylococcus aureus et klebsiella pneumoniae). BIOSAT was tested on 2 virus strains: the enveloped human coronavirus HCoV-229 (similar to Covid-19) and the non-enveloped Murine Norovirus (similar to the gastroenteritis virus). For the former, BIOSAT kills nearly 98% of the virus in less than 2 hours and for the latter, 73% in less than 2 hours.

Technical properties



Flame retardant



Thermal



Antibacterial



Antiviral



Acoustic

Applications Roman blinds - Panel curtains - Curtains - Partition curtain

Composition polyester/polyester FR bioactive

Weight 135 g/m² Width 280 cm

Fabric direction Room High Direction Fitting ↔ cm ↓ cm

Maintenance advice     

Labels France Terre Textile (R016)

Certifications OEKO-TEX STANDARD 100 (CQ 1006/1)

Minimum order 1 linear(s) meter(s)



Technical characteristics

Flame retardant	M1 / B1 / IMO PASS / UNI 8456 / 9174 Classe Uno
Acoustic	Noise reduction coefficient (NRC) : 0.72
Antibacterial	Yes
Optical index	Light reflexion : 57 % Light absorption : 16 % Light transmission : 27 %
Thermal index	Solar reflexion : 53 % Solar absorption : 19 % Solar transmission : 28 % UV transmission : 2 % Gtot : Gt 40 % Fc 68 %
Resilience	Lightfastness (units Class/8) 6 Pilling 5 Dimensional Stability (%) Warp -0.5 Weft -0.5 Martindale (Cycles) 14000 Breaking Elongation Warp 43 Weft 37 Breaking load (daN) Warp 42 Weft 129



(Headquarters) SOTEXPRO - 510 route de Montchal - 42360 PANISSIÈRES - FRANCE - +33 4 77 27 60 60
(Showroom) Le LAB' SOTEXPRO - 4 rue du Mail - 75002 PARIS - FRANCE

Non-contractual photos and colors - Indicative fitting - Fitting may vary depending on supports selected