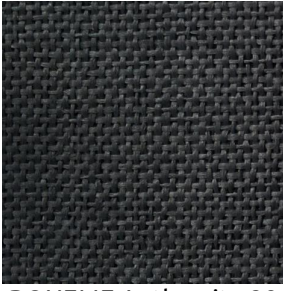
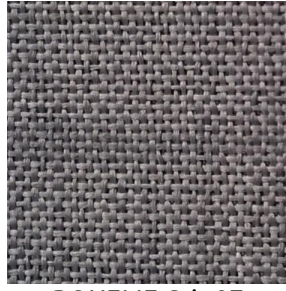


BOHEME



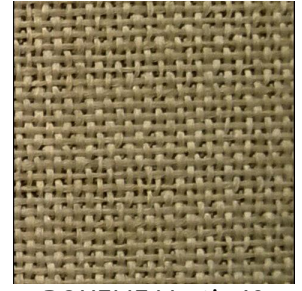
BOHEME Anthracite 38



BOHEME Gris 97



BOHEME Taupe 95



BOHEME Mastic 48



BOHEME Carmin 14



BOHEME Citrouille 136



BOHEME Mousse 92



BOHEME Bleu jean 41

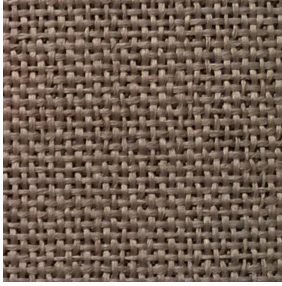


BOHEME Blanc 01



(Headquarters) SOTEXPRO - 510 route de Montchal - 42360 PANISSIÈRES - FRANCE - +33 4 77 27 60 60
(Showroom) Le LAB' SOTEXPRO - 4 rue du Mail - 75002 PARIS - FRANCE

Non-contractual photos and colors - Indicative fitting - Fitting may vary depending on support selected



BOHEME Ficelle 09

Technical properties



Flame retardant



Thermal

Applications Roman blinds - Curtains

Composition 100% FR polyester

Weight 260 g/m² Width 290 cm

Fabric direction Room high or standard direction Fitting ↔ cm ↓ cm

Maintenance advice     

Certifications OEKO-TEX STANDARD 100 (CQ 1006/1)

Minimum order 1 linear(s) meter(s)

Technical characteristics

Flame retardant	M1 / B1 / IMO PASS
Optical index	Light reflexion : 37 % Light absorption : 63 % Light transmission : 0 %
Thermal index	Solar reflexion : 48 % Solar absorption : 51 % Solar transmission : 1 % UV transmission : 0 % Gtot : Gt 41 % Fc 70 %
Resilience	Lightfastness (units Class/8) 5



(Headquarters) SOTEXPRO - 510 route de Montchal - 42360 PANISSIÈRES - FRANCE - +33 4 77 27 60 60
(Showroom) Le LAB' SOTEXPRO - 4 rue du Mail - 75002 PARIS - FRANCE

Non-contractual photos and colors - Indicative fitting - Fitting may vary depending on support selected