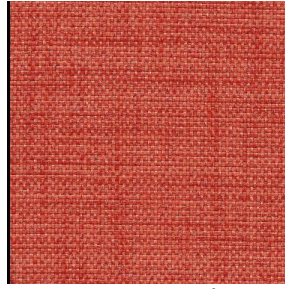


BOLERO



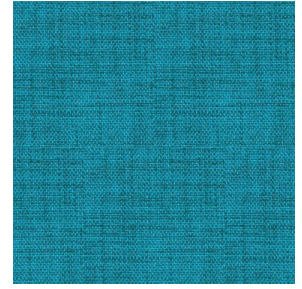
BOLERO Taupe 95



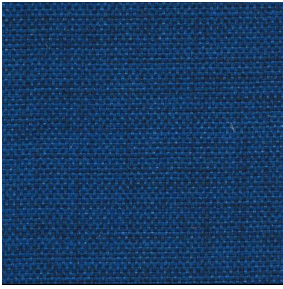
BOLERO Corail 14



BOLERO Or 94



BOLERO Turquoise 53



BOLERO Naval 17



BOLERO Anthracite 38

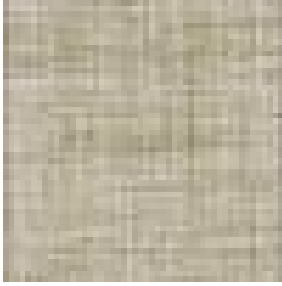


BOLERO Nuit 128



(Headquarters) SOTEXPRO - 510 route de Montchal - 42360 PANISSIÈRES - FRANCE - +33 4 77 27 60 60
(Showroom) Le LAB' SOTEXPRO - 4 rue du Mail - 75002 PARIS - FRANCE

Non-contractual photos and colors - Indicative fitting - Fitting may vary depending on support selected



BOLERO Lin 11

Technical properties



Flame retardant







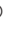
Thermal

Applications Roman blinds - Curtains

Composition 100% FR polyester

Weight 400 g/m² Width 290 cm

Fabric direction Room high or standard direction Fitting ↔ cm ↓ cm

Maintenance advice     

Certifications OEKO-TEX STANDARD 100 (CQ 1006/1)

Minimum order 1 linear(s) meter(s)



Technical characteristics

Flame retardant

M1 / B1 / IMO PASS / UNI 8456 / 9174 Classe Uno

Optical index

Light reflexion : 56 %

Light absorption : 44 %

Light transmission : 0 %

Thermal index

Solar reflexion : 58 %

Solar absorption : 41 %

Solar transmission : 1 %

UV transmission : 0 %

Gtot : Gt 38 % Fc 64 %

Resilience

Lightfastness (units Class/8)

5



(Headquarters) SOTEXPRO - 510 route de Montchal - 42360 PANISSIÈRES - FRANCE - +33 4 77 27 60 60
(Showroom) Le LAB' SOTEXPRO - 4 rue du Mail - 75002 PARIS - FRANCE

Non-contractual photos and colors - Indicative fitting - Fitting may vary depending on support selected