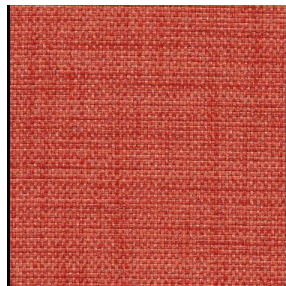


BOLERO



BOLERO Taupe 95



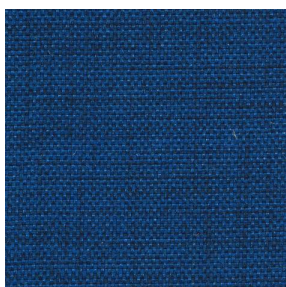
BOLERO Corail 14



BOLERO Or 94



BOLERO Lin 11



BOLERO Naval 17

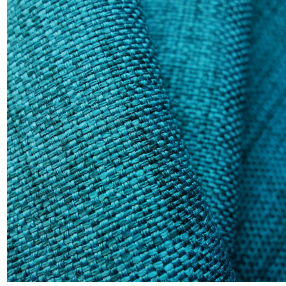
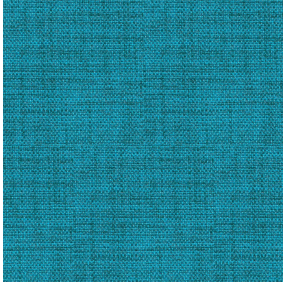


BOLERO Anthracite 38



(Headquarters) SOTEXPRO - 510 route de Montchal - 42360 PANISSIÈRES - FRANCE - +33 4 77 27 60 60

Non-contractual photos and colors - Indicative fitting - Fitting may vary depending on support selected



BOLERO Turquoise 53

Technical properties



Flame retardant



Thermal

Applications Roman blinds - Curtains

Composition 100% FR polyester

Weight 400 g/m² Width 290 cm

Fabric direction Room high or standard direction Fitting ↔ cm ↓ cm

Maintenance advice      

Certifications OEKO-TEX STANDARD 100 (CQ 1006/1)

Minimum order 1 linear(s) meter(s)



Technical characteristics

Flame retardant

M1 / B1 / IMO PASS / UNI 8456 / 9174 Classe Uno

Optical index

Light reflexion : 56 %

Light absorption : 44 %

Light transmission : 0 %

Thermal index

Solar reflexion : 55 %

Solar absorption : 44 %

Solar transmission : 1 %

UV transmission : 0 %

Gtot : Gt 39 % Fc 66 %

Resilience

Lightfastness (units Class/8)

5



(Headquarters) SOTEXPRO - 510 route de Montchal - 42360 PANISSIÈRES - FRANCE - +33 4 77 27 60 60

Non-contractual photos and colors - Indicative fitting - Fitting may vary depending on support selected