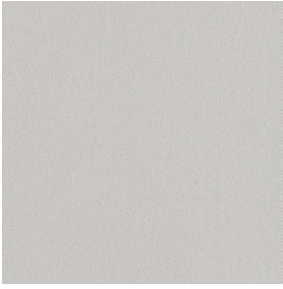
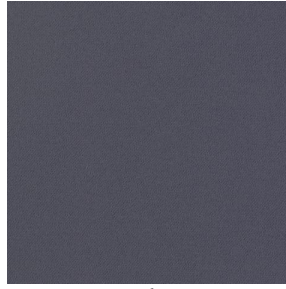


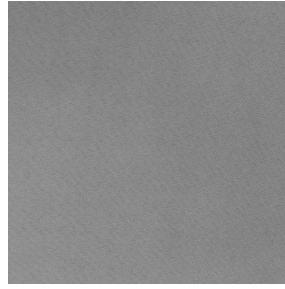
# BORA



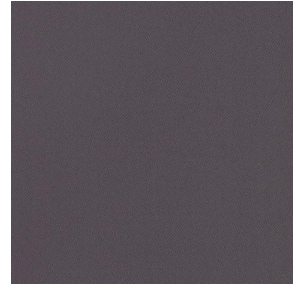
BORA Mastic 48



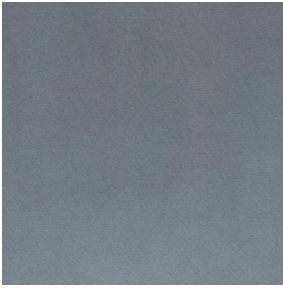
BORA Anthracite 38



BORA Sienne 29



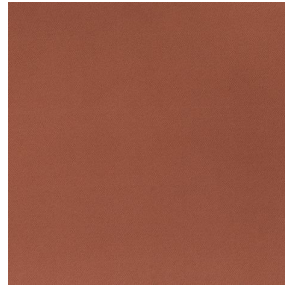
BORA Taupe 95



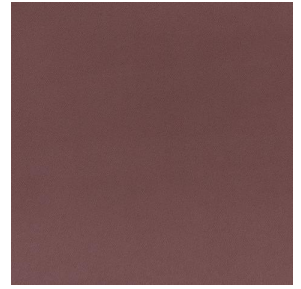
BORA Perle 96



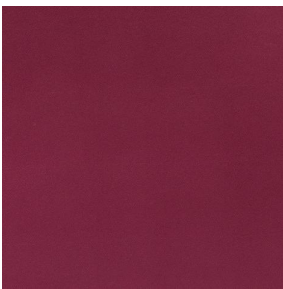
BORA Or 94



BORA Terre 107



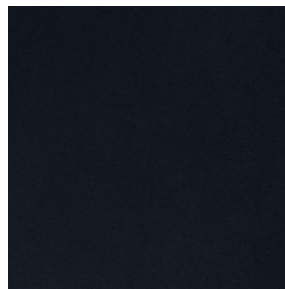
BORA Chamois 111



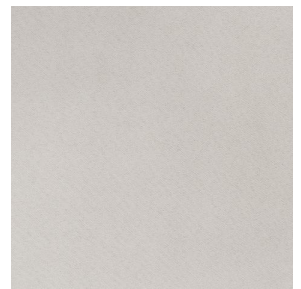
BORA Bordeaux 04



BORA Aubergine 27



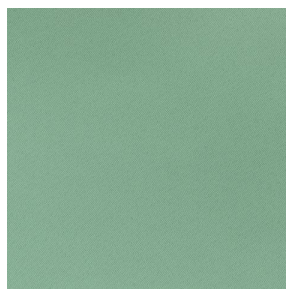
BORA Noir 10



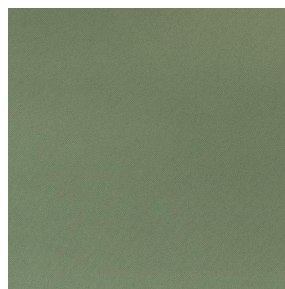
BORA Crème 02



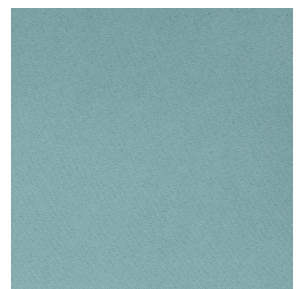
BORA Bergamotte 121



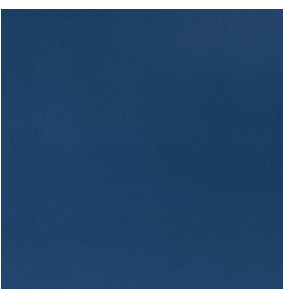
BORA Tilleul 103



BORA Kaki 148



BORA Emeraude 88



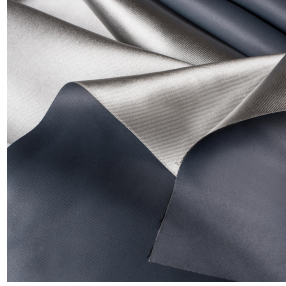
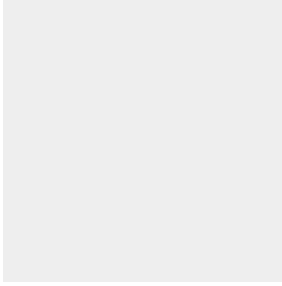
BORA Indigo 144



sotexpro

(Headquarters) SOTEXPRO - 510 route de Montchal - 42360 PANISSIÈRES - FRANCE - +33 4 77 27 60 60  
(Showroom) Le LAB' SOTEXPRO - 4 rue du Mail - 75002 PARIS - FRANCE

Non-contractual photos and colors - Indicative fitting - Fitting may vary depending on support selected



# BORA Blanc 01

This plain fabric with shiny backing will enhance comfort levels in the premises by providing optimal protection against light radiation.

## Technical properties



Flame retardant



Thermal

Applications Roman blinds - Lining - Curtains

Composition 100% FR polyester

Weight 260 g/m<sup>2</sup> Width 280 cm

Fabric direction Room high or standard direction Fitting ↔ cm ↓ cm

Maintenance advice     

Certifications OEKO-TEX STANDARD 100 (CQ 1006/1)

Minimum order 1 linear(s) meter(s)



## Technical characteristics

Flame retardant	M1 / B1 / IMO PASS	
Optical index	Light reflexion :	51 %
	Light absorption :	49 %
	Light transmission :	0 %
Thermal index	Solar reflexion :	50 %
	Solar absorption :	50 %
	Solar transmission :	0 %
	UV transmission :	0 %
	Gtot :	Gt 41 % Fc 69 %
Resilience	Lightfastness (units Class/8)	5



(Headquarters) SOTEXPRO - 510 route de Montchal - 42360 PANISSIÈRES - FRANCE - +33 4 77 27 60 60  
(Showroom) Le LAB' SOTEXPRO - 4 rue du Mail - 75002 PARIS - FRANCE

Non-contractual photos and colors - Indicative fitting - Fitting may vary depending on support selected