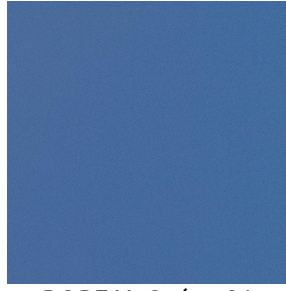


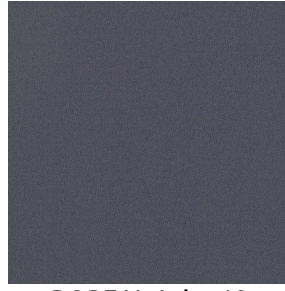
BOREAL



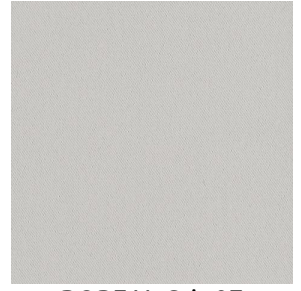
BOREAL Turquoise 53



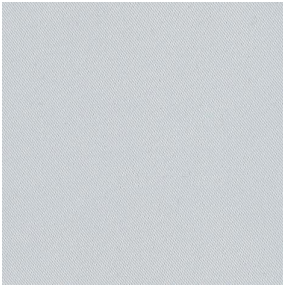
BOREAL Océan 91



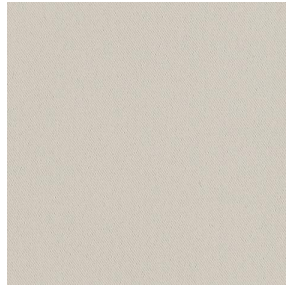
BOREAL Acier 18



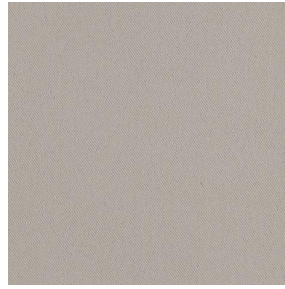
BOREAL Gris 97



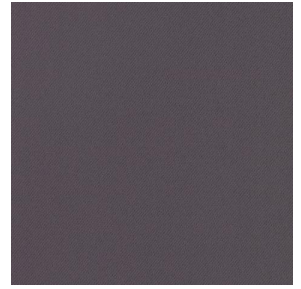
BOREAL Blanc 01



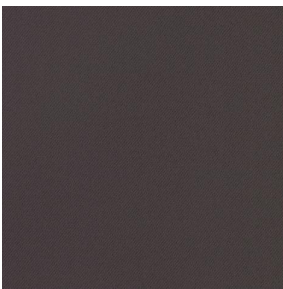
BOREAL Crème 02



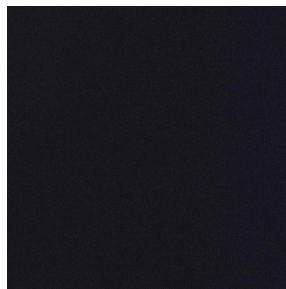
BOREAL Mastic 48



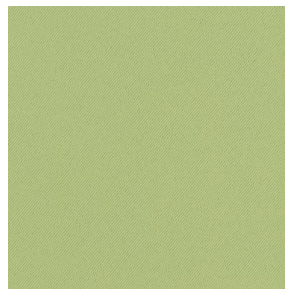
BOREAL Taupe 95



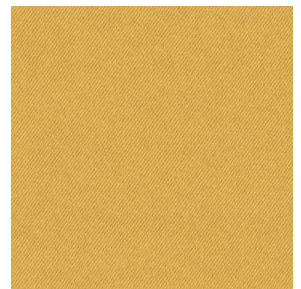
BOREAL Chocolat 70



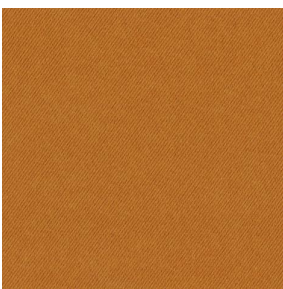
BOREAL Noir 10



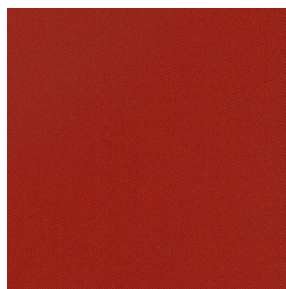
BOREAL Mousse 92



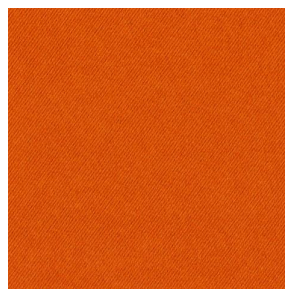
BOREAL Moutarde 47



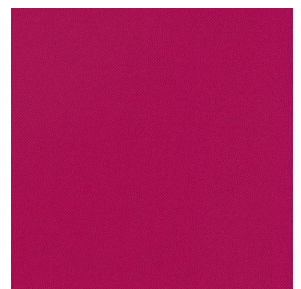
BOREAL Cuivre 50



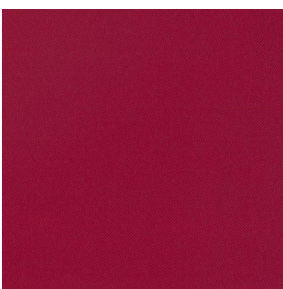
BOREAL Terracotta 65



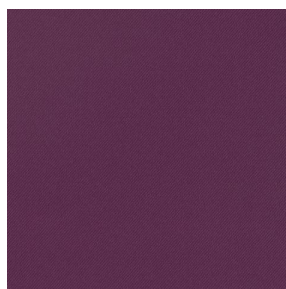
BOREAL Orange 15



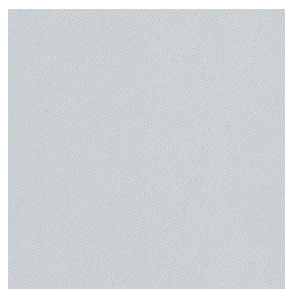
BOREAL Fuchsia 33



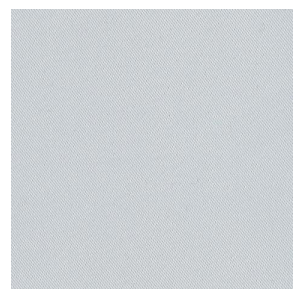
BOREAL Bordeaux 04



BOREAL Prune 84



BOREAL BPI 00



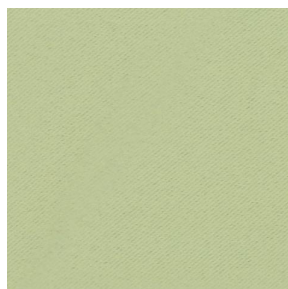
BOREAL BPI 00



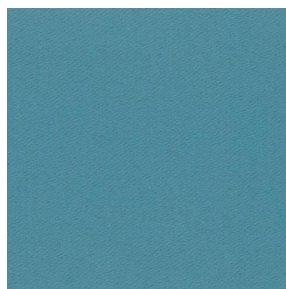
(Headquarters) SOTEXPRO - 510 route de Montchal - 42360 PANISSIÈRES - FRANCE - +33 4 77 27 60 60

Non-contractual photos and colors - Indicative fitting - Fitting may vary depending on support selected

BOREAL



BOREAL cactus 36



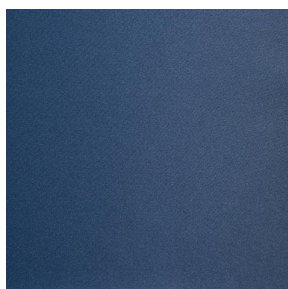
BOREAL emeraude 88



BOREAL Titanium 98



BOREAL Faience 149

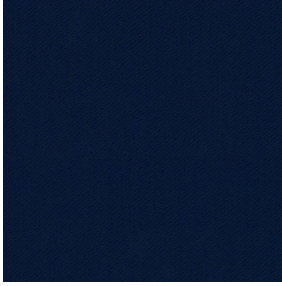


BOREAL Indigo 144



(Headquarters) SOTEXPRO - 510 route de Montchal - 42360 PANISSIÈRES - FRANCE - +33 4 77 27 60 60

Non-contractual photos and colors - Indicative fitting - Fitting may vary depending on support selected



BOREAL nuit 128

This plain fabric is available in a range of several colours, suitable for any style and mood.

Technical properties



Flame retardant



Thermal



Acoustic

Applications Roman blinds - Valences - Lining - Bed runners - Curtains

Composition 100% FR polyester

Weight 260 g/m² Width 290 cm

Fabric direction Room high or standard direction Fitting ↔ cm ↓ cm

Maintenance advice

Certifications OEKO-TEX STANDARD 100 (CQ 1006/1)

Minimum order 1 linear(s) meter(s)

Technical characteristics

Flame retardant

M1 / EN13773 : 2003 Class 1 / B1 / IMO PASS / UNI 8456 / 9174
Classe Uno

Acoustic

Noise reduction coefficient (NRC) : **0.88**

Weighted sound absorption coefficient (a_w) : **0.90**

Acoustic absorption class (a_w) : **A**

Optical index

Light reflexion : **3 %**

Light absorption : **97 %**

Light transmission : **0 %**

Thermal index

Solar reflexion : **27 %**

Solar absorption : **73 %**

Solar transmission : **0 %**

UV transmission : **0 %**

Gtot : **Gt 48 % Fc 81 %**

Resilience

Lightfastness (units Class/8) **4**

Dimensional Stability (%)

Warp **0**

Weft **0**

Breaking Elongation

Warp **17**

Weft **27**

Breaking load (daN)

Warp **87**

Weft **110**



(Headquarters) SOTEXPRO - 510 route de Montchal - 42360 PANISSIÈRES - FRANCE - +33 4 77 27 60 60

Non-contractual photos and colors - Indicative fitting - Fitting may vary depending on support selected