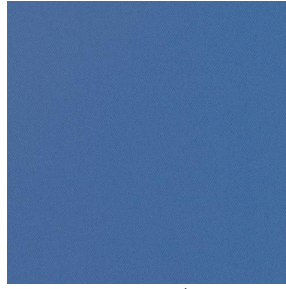


# BOREAL



BOREAL Turquoise 53



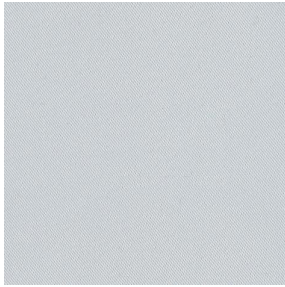
BOREAL Océan 91



BOREAL Acier 18



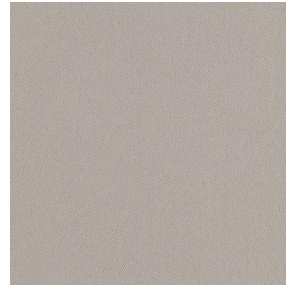
BOREAL Gris 97



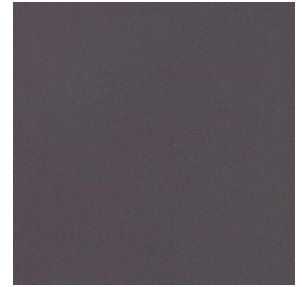
BOREAL Blanc 01



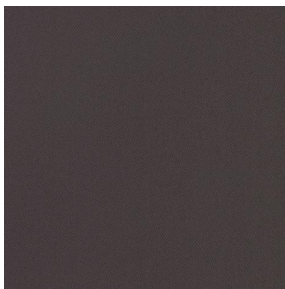
BOREAL Crème 02



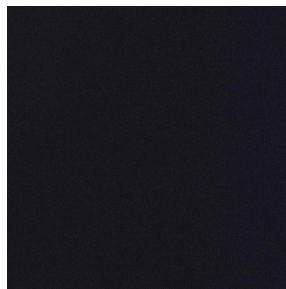
BOREAL Mastic 48



BOREAL Taupe 95



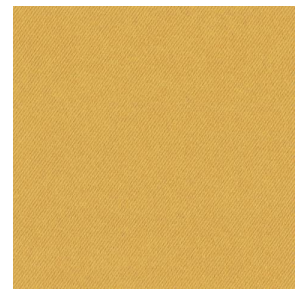
BOREAL Chocolat 70



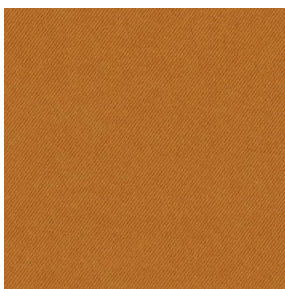
BOREAL Noir 10



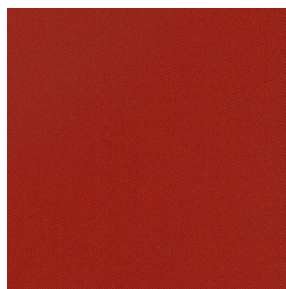
BOREAL Mousse 92



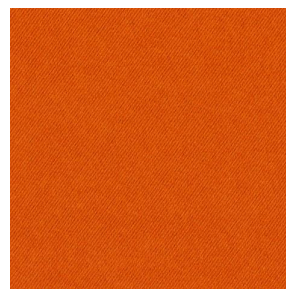
BOREAL Moutarde 47



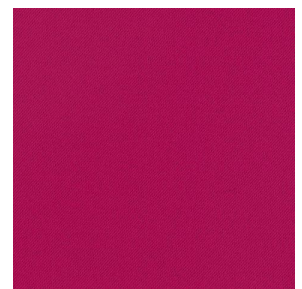
BOREAL Cuivre 50



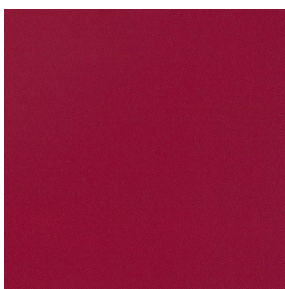
BOREAL Terracotta 65



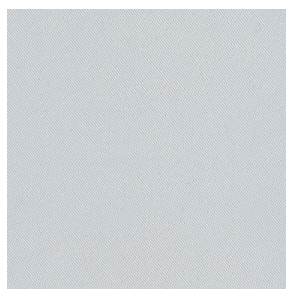
BOREAL Orange 15



BOREAL Fuchsia 33



BOREAL Bordeaux 04



BOREAL BPI 00



BOREAL BPI 00



BOREAL cactus 36



(Headquarters) SOTEXPRO - 510 route de Montchal - 42360 PANISSIÈRES - FRANCE - +33 4 77 27 60 60  
(Showroom) Le LAB' SOTEXPRO - 4 rue du Mail - 75002 PARIS - FRANCE

Non-contractual photos and colors - Indicative fitting - Fitting may vary depending on support selected

# BOREAL



BOREAL emeraude 88



BOREAL nuit 128



BOREAL Titanium 98



BOREAL Faience 149

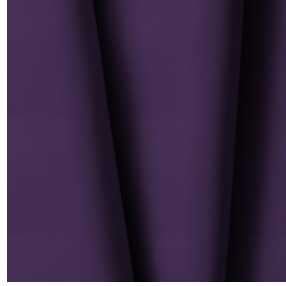
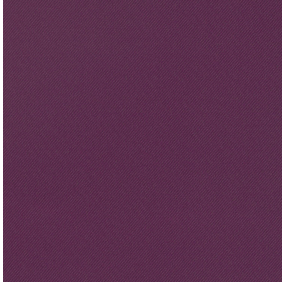


BOREAL Indigo 144



(Headquarters) SOTEXPRO - 510 route de Montchal - 42360 PANISSIÈRES - FRANCE - +33 4 77 27 60 60  
(Showroom) Le LAB' SOTEXPRO - 4 rue du Mail - 75002 PARIS - FRANCE

*Non-contractual photos and colors - Indicative fitting - Fitting may vary depending on support selected*



# BOREAL Prune 84

This plain fabric is available in a range of several colours, suitable for any style and mood.

## Technical properties



Flame retardant



Thermal



Acoustic

Applications Roman blinds - Valences - Lining - Bed runners - Curtains

Composition 100% FR polyester

Weight 260 g/m<sup>2</sup> Width 290 cm

Fabric direction Room high or standard direction Fitting ↔ cm ↓ cm

Maintenance advice     

Certifications OEKO-TEX STANDARD 100 (CQ 1006/1)

Minimum order 1 linear(s) meter(s)



## Technical characteristics

Flame retardant	M1 / B1 / IMO PASS / UNI 8456 / 9174 Classe Uno
Acoustic	Noise reduction coefficient (NRC) : <b>0.88</b> Weighted sound absorption coefficient (a <sub>w</sub> ) : <b>0.90</b> Acoustic absorption class (a <sub>w</sub> ) : <b>A</b>
Optical index	Light reflexion : <b>3 %</b> Light absorption : <b>97 %</b> Light transmission : <b>0 %</b>
Thermal index	Solar reflexion : <b>27 %</b> Solar absorption : <b>73 %</b> Solar transmission : <b>0 %</b> UV transmission : <b>0 %</b> Gtot : <b>Gt 48 % Fc 81 %</b>
Resilience	Lightfastness (units Class/8) <b>4</b> Dimensional Stability (%) Warp <b>0</b> Weft <b>0</b> Breaking Elongation Warp <b>17</b> Weft <b>27</b> Breaking load (daN) Warp <b>87</b> Weft <b>110</b>



(Headquarters) SOTEXPRO - 510 route de Montchal - 42360 PANISSIÈRES - FRANCE - +33 4 77 27 60 60  
(Showroom) Le LAB' SOTEXPRO - 4 rue du Mail - 75002 PARIS - FRANCE

Non-contractual photos and colors - Indicative fitting - Fitting may vary depending on supports selected