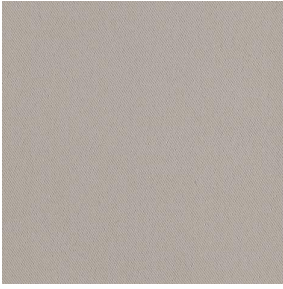


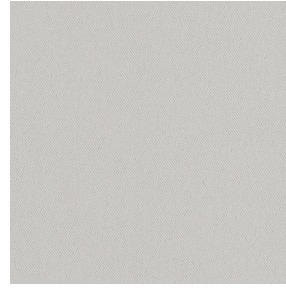
# BORNEO



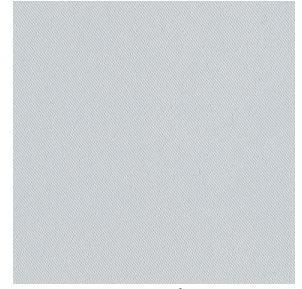
BORNEO Mastic 48



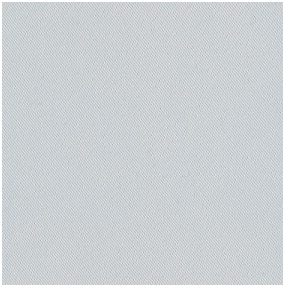
BORNEO Crème 02



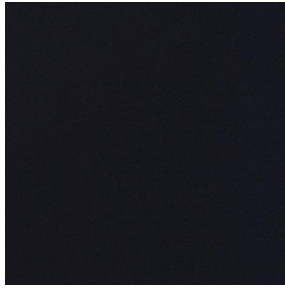
BORNEO Gris 97



BORNEO Blanc 01



BORNEO BPI 00

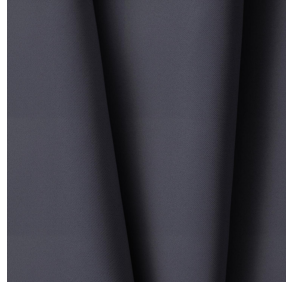
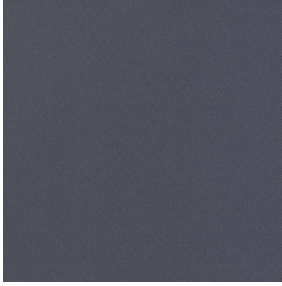


BORNEO Noir 10



(Headquarters) SOTEXPRO - 510 route de Montchal - 42360 PANISSIÈRES - FRANCE - +33 4 77 27 60 60  
(Showroom) Le LAB' SOTEXPRO - 4 rue du Mail - 75002 PARIS - FRANCE

*Non-contractual photos and colors - Indicative fitting - Fitting may vary depending on support selected*



# BORNEO Acier 18

This is a heavy dimout and 99% blackout fabric,

## Technical properties



Flame retardant



Thermal



Acoustic

Applications Roman blinds - Curtains

Composition 100% FR polyester

Weight 440 g/m<sup>2</sup> Width 280 cm

Fabric direction Room high or standard direction Fitting ↔ cm ↓ cm

Maintenance advice

Certifications OEKO-TEX STANDARD 100 (CQ 1006/1)

Minimum order 1 linear(s) meter(s)

## Technical characteristics

Flame retardant	M1 / B1 / IMO PASS / UNI 8456 / 9174 Classe Uno	
Acoustic	Noise reduction coefficient (NRC) :	<b>0.89</b>
	Weighted sound absorption coefficient (a <sub>w</sub> ) :	<b>0.90</b>
	Acoustic absorption class (a <sub>w</sub> ) :	<b>A</b>
Optical index	Light reflexion :	<b>14 %</b>
	Light absorption :	<b>86 %</b>
	Light transmission :	<b>0 %</b>
Thermal index	Solar reflexion :	<b>33 %</b>
	Solar absorption :	<b>67 %</b>
	Solar transmission :	<b>0 %</b>
	UV transmission :	<b>0 %</b>
	Gtot :	<b>Gt 46 % Fc 78 %</b>
Resilience	Lightfastness (units Class/8)	<b>6</b>
	Dimensional Stability (%)	
	Warp	<b>-0.5</b>
	Weft	<b>0</b>
	Breaking Elongation	
	Warp	<b>31</b>
	Weft	<b>0</b>
	Breaking load (daN)	
	Warp	<b>130</b>
	Weft	<b>250</b>



(Headquarters) SOTEXPRO - 510 route de Montchal - 42360 PANISSIÈRES - FRANCE - +33 4 77 27 60 60  
(Showroom) Le LAB' SOTEXPRO - 4 rue du Mail - 75002 PARIS - FRANCE

Non-contractual photos and colors - Indicative fitting - Fitting may vary depending on supports selected