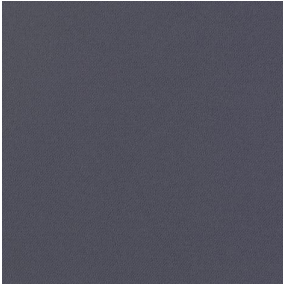


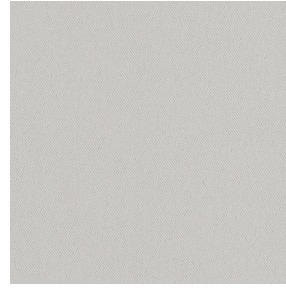
BORNEO



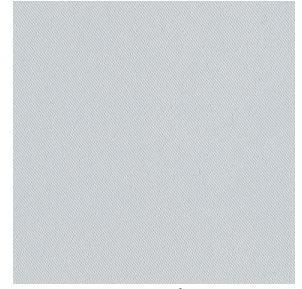
BORNEO Acier 18



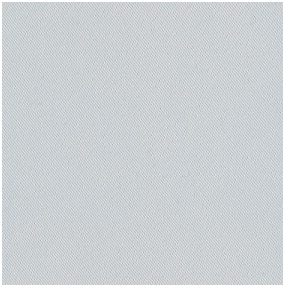
BORNEO Crème 02



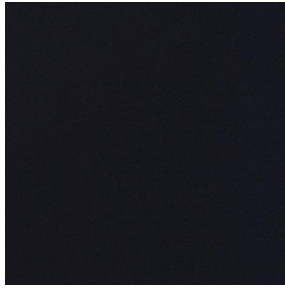
BORNEO Gris 97



BORNEO Blanc 01



BORNEO BPI 00

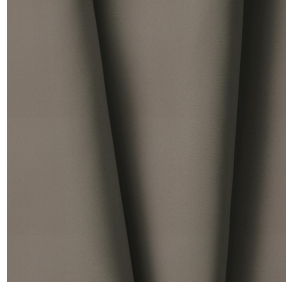
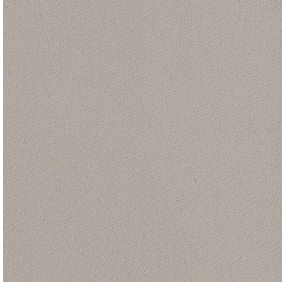


BORNEO Noir 10



(Headquarters) SOTEXPRO - 510 route de Montchal - 42360 PANISSIÈRES - FRANCE - +33 4 77 27 60 60
(Showroom) Le LAB' SOTEXPRO - 4 rue du Mail - 75002 PARIS - FRANCE

Non-contractual photos and colors - Indicative fitting - Fitting may vary depending on support selected



BORNEO Mastic 48

This is a heavy dimout and 99% blackout fabric,

Technical properties



Flame retardant



Thermal



Acoustic

Applications Roman blinds - Curtains

Composition 100% FR polyester

Weight 440 g/m² Width 280 cm

Fabric direction Room high or standard direction Fitting ↔ cm ↓ cm

Maintenance advice    

Certifications OEKO-TEX STANDARD 100 (CQ 1006/1)

Minimum order 1 linear(s) meter(s)

Technical characteristics

Flame retardant	M1 / B1 / IMO PASS / UNI 8456 / 9174 Classe Uno
Acoustic	Noise reduction coefficient (NRC) : 0.89
	Weighted sound absorption coefficient (a _w) : 0.90
	Acoustic absorption class (a _w) : A
Optical index	Light reflexion : 48 %
	Light absorption : 52 %
	Light transmission : 0 %
Thermal index	Solar reflexion : 49 %
	Solar absorption : 51 %
	Solar transmission : 0 %
	UV transmission : 0 %
	Gtot : Gt 41 % Fc 69 %
Resilience	Lightfastness (units Class/8) 6
	Dimensional Stability (%)
	Warp -0.5
	Weft 0
	Breaking Elongation
	Warp 31
	Weft 0
	Breaking load (daN)
	Warp 130
	Weft 250



(Headquarters) SOTEXPRO - 510 route de Montchal - 42360 PANISSIÈRES - FRANCE - +33 4 77 27 60 60
(Showroom) Le LAB' SOTEXPRO - 4 rue du Mail - 75002 PARIS - FRANCE

Non-contractual photos and colors - Indicative fitting - Fitting may vary depending on supports selected