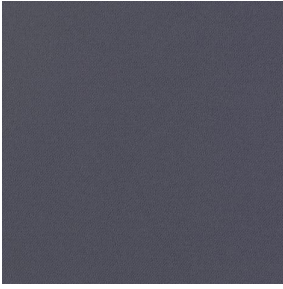
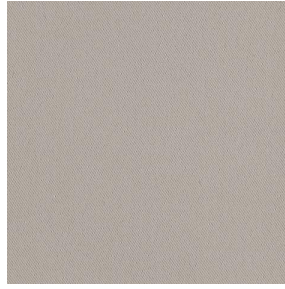


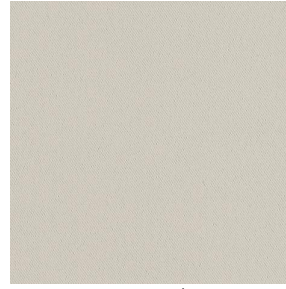
BORNEO



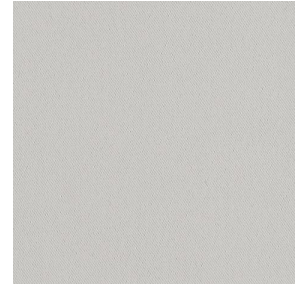
BORNEO Acier 18



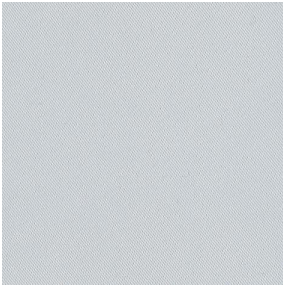
BORNEO Mastic 48



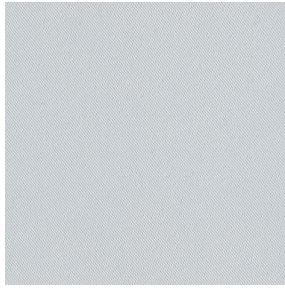
BORNEO Crème 02



BORNEO Gris 97



BORNEO Blanc 01

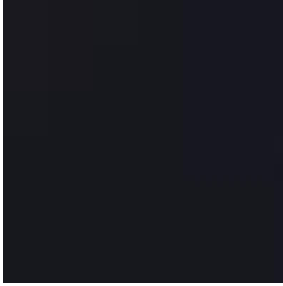


BORNEO BPI 00



(Headquarters) SOTEXPRO - 510 route de Montchal - 42360 PANISSIÈRES - FRANCE - +33 4 77 27 60 60
(Showroom) Le LAB' SOTEXPRO - 4 rue du Mail - 75002 PARIS - FRANCE

Non-contractual photos and colors - Indicative fitting - Fitting may vary depending on support selected



BORNEO Noir 10

This is a heavy dimout and 99% blackout fabric,

Technical properties



Flame retardant



Thermal



Acoustic

Applications Roman blinds - Curtains

Composition 100% FR polyester

Weight 440 g/m² Width 280 cm

Fabric direction Room high or standard direction Fitting ↔ cm ↓ cm

Maintenance advice

Certifications OEKO-TEX STANDARD 100 (CQ 1006/1)

Minimum order 1 linear(s) meter(s)

Technical characteristics

Flame retardant	M1 / B1 / IMO PASS / UNI 8456 / 9174 Classe Uno
Acoustic	Noise reduction coefficient (NRC) : 0.89 Weighted sound absorption coefficient (a _w) : 0.90 Acoustic absorption class (a _w) : A
Optical index	Light reflexion : 14 % Light absorption : 86 % Light transmission : 0 %
Thermal index	Solar reflexion : 33 % Solar absorption : 67 % Solar transmission : 0 % UV transmission : 0 % Gtot : Gt 46 % Fc 78 %
Resilience	Lightfastness (units Class/8) 6 Dimensional Stability (%) Warp -0.5 Weft 0 Breaking Elongation Warp 31 Weft 0 Breaking load (daN) Warp 130 Weft 250



(Headquarters) SOTEXPRO - 510 route de Montchal - 42360 PANISSIÈRES - FRANCE - +33 4 77 27 60 60
(Showroom) Le LAB' SOTEXPRO - 4 rue du Mail - 75002 PARIS - FRANCE

Non-contractual photos and colors - Indicative fitting - Fitting may vary depending on supports selected