

# BRUNIEN SIENTA

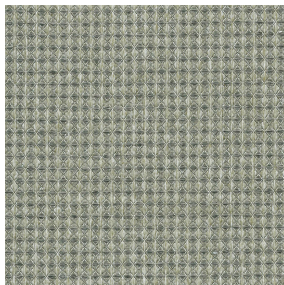


**BRUNIEN SIENTA**  
**Naturel 26**



(Headquarters) **SOTEXPRO** - 510 route de Montchal - 42360 PANISSIÈRES - FRANCE - +33 4 77 27 60 60  
(Showroom) **Le LAB' SOTEXPRO** - 4 rue du Mail - 75002 PARIS - FRANCE

Non-contractual photos and colors - Indicative fitting - Fitting may vary depending on support selected



# BRUNIEN SIENTA Ficelle 09

Textured fabric, inspired by ancient, rustic styles and traditional honeycomb weaving.

## Technical properties



Flame retardant



Recycled fabrics

**Applications** Roman blinds - Panel curtains - Curtains - Cushions

**Composition** 40% recycled polyester FR / 60% polyester FR

**Weight** 330 g/m<sup>2</sup> **Width** 290 cm

**Fabric direction** Room high or standard direction **Fitting** ↔ cm ↓ cm

**Maintenance advice**

**Labels** France Terre Textile (R016)

**Certifications** OEKO-TEX STANDARD 100 Recyclé (CQ 1006/2)

**Minimum order** 1 linear(s) meter(s)

## Technical characteristics

Flame retardant

M1 / IMO PASS

Resilience

Lightfastness (units Class/8)	5
Pilling	4-5
Dimentional Stability (%)	
Warp	1
Weft	1
Martindale (Cycles)	35000
Breaking Elongation	
Warp	27
Weft	22
Breaking load (daN)	
Warp	110
Weft	100



(Headquarters) SOTEXPRO - 510 route de Montchal - 42360 PANISSIÈRES - FRANCE - +33 4 77 27 60 60  
(Showroom) Le LAB' SOTEXPRO - 4 rue du Mail - 75002 PARIS - FRANCE

Non-contractual photos and colors - Indicative fitting - Fitting may vary depending on support selected