

BRUNIEN SIENTA

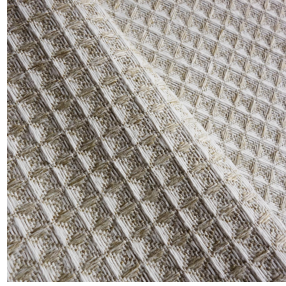


BRUNIEN SIENTA Ficelle
09



(Headquarters) SOTEXPRO - 510 route de Montchal - 42360 PANISSIÈRES - FRANCE - +33 4 77 27 60 60
(Showroom) Le LAB' SOTEXPRO - 4 rue du Mail - 75002 PARIS - FRANCE

Non-contractual photos and colors - Indicative fitting - Fitting may vary depending on support selected



BRUNIEN SIENTA Naturel 26

Textured fabric, inspired by ancient, rustic styles and traditional honeycomb weaving.

Technical properties



Flame retardant



Recycled fabrics

Applications Roman blinds - Panel curtains - Curtains - Cushions

Composition 40% recycled polyester FR / 60% polyester FR

Weight 330 g/m² Width 290 cm

Fabric direction Room high or standard direction Fitting ↔ cm ↓ cm

Maintenance advice

Labels France Terre Textile (R016)

Certifications OEKO-TEX STANDARD 100 Recyclé (CQ 1006/2)

Minimum order 1 linear(s) meter(s)

Technical characteristics

Flame retardant

M1 / IMO PASS

Resilience

Lightfastness (units Class/8)

5

Pilling

4-5

Dimensional Stability (%)

Warp

1

Weft

1

Martindale (Cycles)

35000

Breaking Elongation

Warp

27

Weft

22

Breaking load (daN)

Warp

110

Weft

100



(Headquarters) SOTEXPRO - 510 route de Montchal - 42360 PANISSIÈRES - FRANCE - +33 4 77 27 60 60
(Showroom) Le LAB' SOTEXPRO - 4 rue du Mail - 75002 PARIS - FRANCE

Non-contractual photos and colors - Indicative fitting - Fitting may vary depending on support selected