

COLLEGE



COLLEGE Naval 17



COLLEGE Anis 62



COLLEGE Poussin 20



COLLEGE Ficelle 09



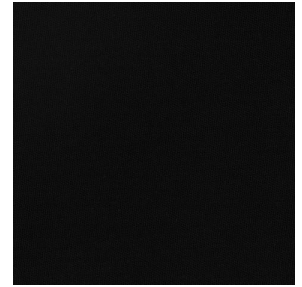
COLLEGE Nacre 04



COLLEGE Naturel 26



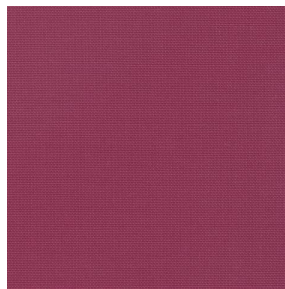
COLLEGE acier 18



COLLEGE Noir 10



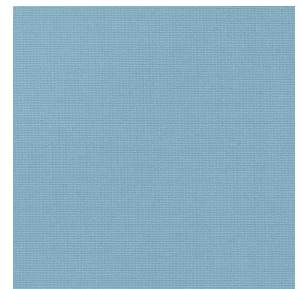
COLLEGE Corail 14



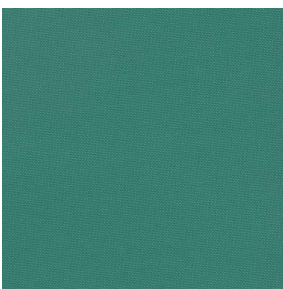
COLLEGE Framboise 81



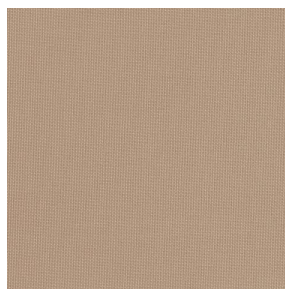
COLLEGE Gentiane 16



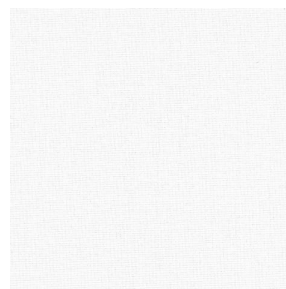
COLLEGE Turquoise 53



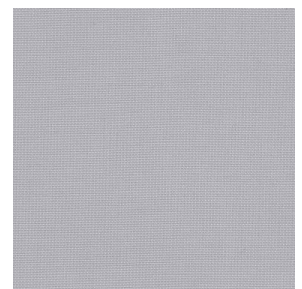
COLLEGE Vert 24



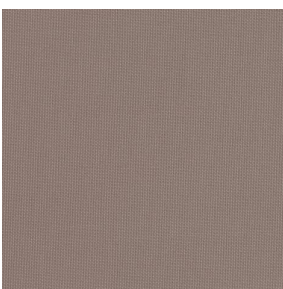
COLLEGE Mastic 48



COLLEGE Blanc 01



COLLEGE Souris 31



COLLEGE Moka 13



COLLEGE Mordoré 133



COLLEGE Paille 83



COLLEGE Pêche 52



(Headquarters) SOTEXPRO - 510 route de Montchal - 42360 PANISSIÈRES - FRANCE - +33 4 77 27 60 60
(Showroom) Le LAB' SOTEXPRO - 4 rue du Mail - 75002 PARIS - FRANCE

Non-contractual photos and colors - Indicative fitting - Fitting may vary depending on support selected

COLLEGE



COLLEGE Safran 49



COLLEGE Havane 44



COLLEGE Sanguine 05



COLLEGE Evêque 154



COLLEGE Bergamotte
121



COLLEGE Olive 61



COLLEGE Absinthe 132



COLLEGE Indigo 144

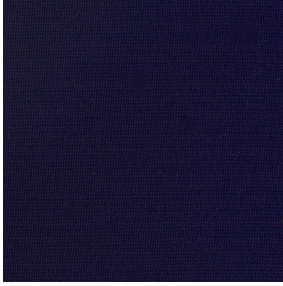


COLLEGE Titanium 98



(Headquarters) SOTEXPRO - 510 route de Montchal - 42360 PANISSIÈRES - FRANCE - +33 4 77 27 60 60
(Showroom) Le LAB' SOTEXPRO - 4 rue du Mail - 75002 PARIS - FRANCE

Non-contractual photos and colors - Indicative fitting - Fitting may vary depending on support selected



COLLEGE Marine 25

This light-filtering fabric is available in a range of several colours, providing you with some great decoration possibilities.

Technical properties



Flame retardant



Thermal

Applications Roman blinds - Panel curtains - Curtains - Decorative frames

Composition 100% FR polyester

Weight 200 g/m² Width 140 cm / 280 cm

Fabric direction Room high or standard direction Fitting ↔ cm ↓ cm

Maintenance advice     

Labels France Terre Textile (R016)

Certifications OEKO-TEX STANDARD 100 (CQ 1006/1)

Minimum order 1 linear(s) metter(s)

Technical characteristics

Flame retardant	M1 / B1 / IMO PASS / UNI 8456 / 9174 Classe Uno
Optical index	Light reflexion : 2 %
	Light absorption : 93 %
	Light transmission : 5 %
Thermal index	Solar reflexion : 28 %
	Solar absorption : 53 %
	Solar transmission : 19 %
	UV transmission : 5 %
	Gtot : Gt 48 % Fc 81 %
Resilience	Lightfastness (units Class/8) 4
	Dimensional Stability (%)
	Warp -2.5
	Weft -0.5
	Breaking Elongation
	Warp 23
	Weft 24
	Breaking load (daN)
	Warp 93
Weft 120	



(Headquarters) SOTEXPRO - 510 route de Montchal - 42360 PANISSIÈRES - FRANCE - +33 4 77 27 60 60
(Showroom) Le LAB' SOTEXPRO - 4 rue du Mail - 75002 PARIS - FRANCE

Non-contractual photos and colors - Indicative fitting - Fitting may vary depending on supports selected