

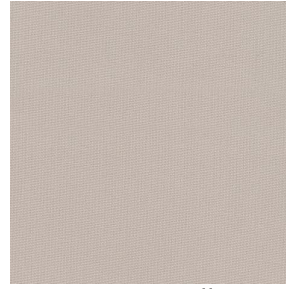
# COLLEGE



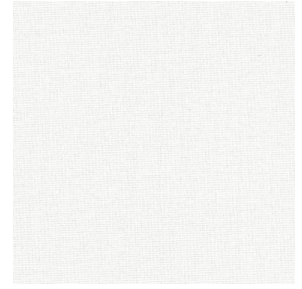
COLLEGE Naval 17



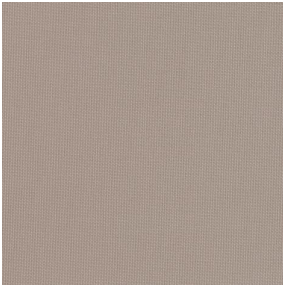
COLLEGE Anis 62



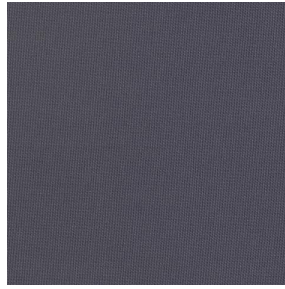
COLLEGE Ficelle 09



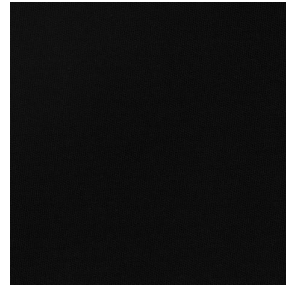
COLLEGE Nacre 04



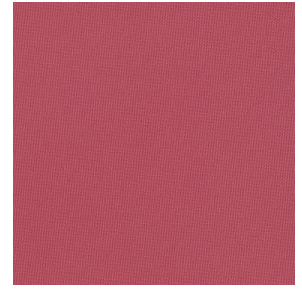
COLLEGE Naturel 26



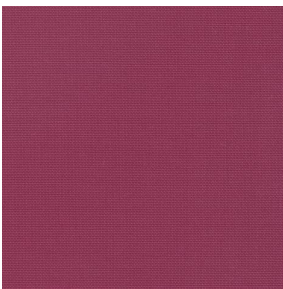
COLLEGE acier 18



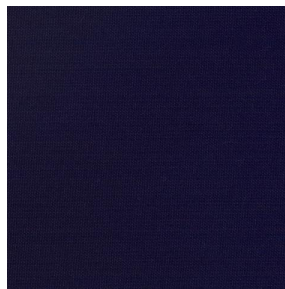
COLLEGE Noir 10



COLLEGE Corail 14



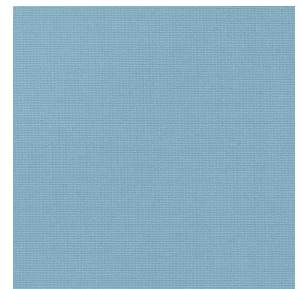
COLLEGE Framboise 81



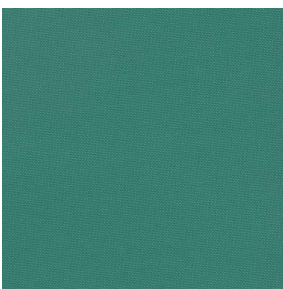
COLLEGE Marine 25



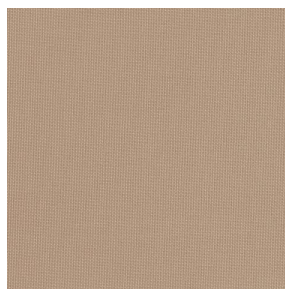
COLLEGE Gentiane 16



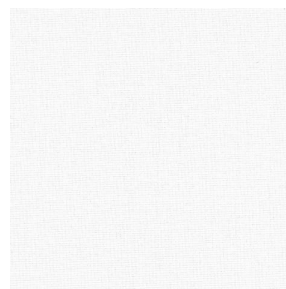
COLLEGE Turquoise 53



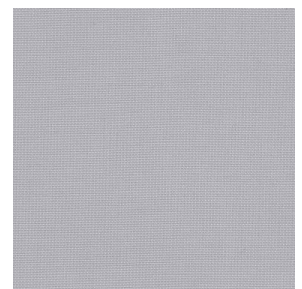
COLLEGE Vert 24



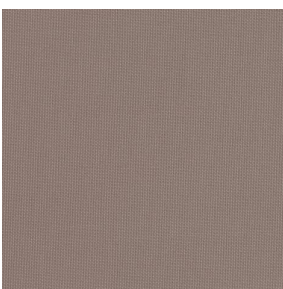
COLLEGE Mastic 48



COLLEGE Blanc 01



COLLEGE Souris 31



COLLEGE Moka 13



COLLEGE Mordoré 133



COLLEGE Paille 83



COLLEGE Pêche 52



(Headquarters) SOTEXPRO - 510 route de Montchal - 42360 PANISSIÈRES - FRANCE - +33 4 77 27 60 60  
(Showroom) Le LAB' SOTEXPRO - 4 rue du Mail - 75002 PARIS - FRANCE

Non-contractual photos and colors - Indicative fitting - Fitting may vary depending on support selected

# COLLEGE



COLLEGE Safran 49



COLLEGE Havane 44



COLLEGE Sanguine 05



COLLEGE Evêque 154



COLLEGE Bergamotte  
121



COLLEGE Olive 61



COLLEGE Absinthe 132



COLLEGE Indigo 144

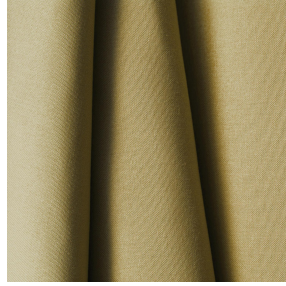
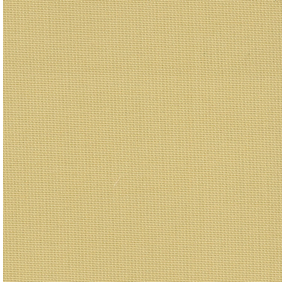


COLLEGE Titanium 98



(Headquarters) SOTEXPRO - 510 route de Montchal - 42360 PANISSIÈRES - FRANCE - +33 4 77 27 60 60  
(Showroom) Le LAB' SOTEXPRO - 4 rue du Mail - 75002 PARIS - FRANCE

Non-contractual photos and colors - Indicative fitting - Fitting may vary depending on support selected



# COLLEGE Poussin 20

This light-filtering fabric is available in a range of several colours, providing you with some great decoration possibilities.

## Technical properties



Flame retardant



Thermal

**Applications** Roman blinds - Panel curtains - Curtains - Decorative frames

**Composition** 100% FR polyester

**Weight** 200 g/m<sup>2</sup> **Width** 140 cm / 280 cm

**Fabric direction** Room high or standard direction **Fitting** ↔ cm ↓ cm

**Maintenance advice**     

**Labels** France Terre Textile (R016)

**Certifications** OEKO-TEX STANDARD 100 (CQ 1006/1)

**Minimum order** 1 linear(s) meter(s)

## Technical characteristics

Flame retardant	M1 / B1 / IMO PASS / UNI 8456 / 9174 Classe Uno	
Optical index	Light reflexion :	57 %
	Light absorption :	15 %
	Light transmission :	28 %
Thermal index	Solar reflexion :	56 %
	Solar absorption :	14 %
	Solar transmission :	30 %
	UV transmission :	12 %
	Gtot :	Gt 39 % Fc 66 %
Resilience	Lightfastness (units Class/8)	6
	Dimensional Stability (%)	
	Warp	-2.5
	Weft	-0.5
	Breaking Elongation	
	Warp	23
	Weft	24
	Breaking load (daN)	
	Warp	93
Weft	120	



(Headquarters) SOTEXPRO - 510 route de Montchal - 42360 PANISSIÈRES - FRANCE - +33 4 77 27 60 60  
(Showroom) Le LAB' SOTEXPRO - 4 rue du Mail - 75002 PARIS - FRANCE

Non-contractual photos and colors - Indicative fitting - Fitting may vary depending on supports selected