

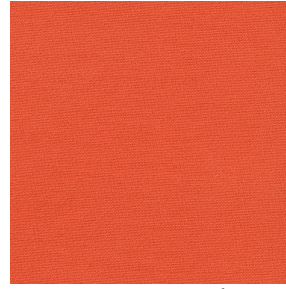
COLLIOURE



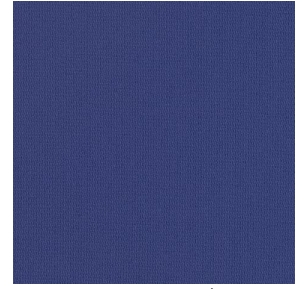
COLLIOURE Olive 61



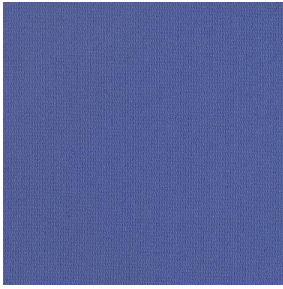
COLLIOURE Agrume 69



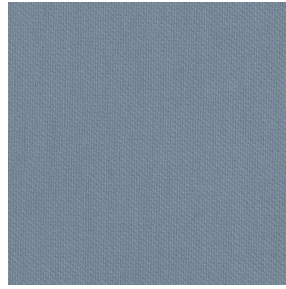
COLLIOURE Mandarine
93



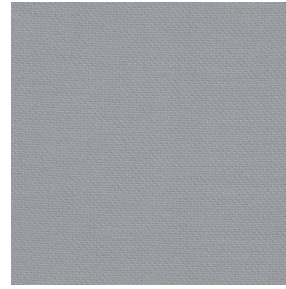
COLLIOURE Océan 91



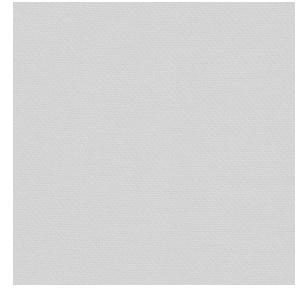
COLLIOURE Pervenche
13



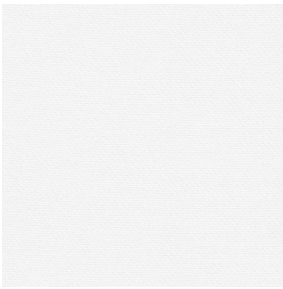
COLLIOURE Ardoise 08



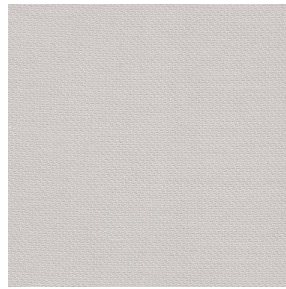
COLLIOURE Glacier 43



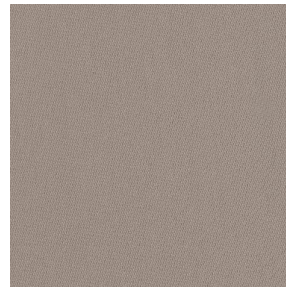
COLLIOURE Souris 31



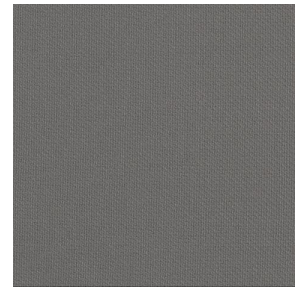
COLLIOURE Blanc 01



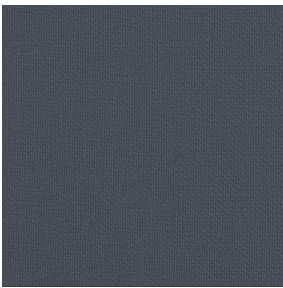
COLLIOURE Ivoire 02



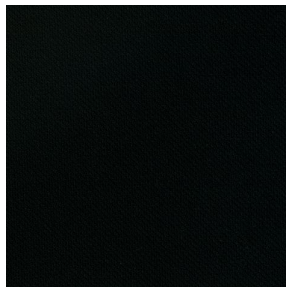
COLLIOURE Naturel 26



COLLIOURE Brun 23



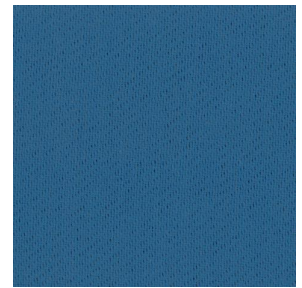
COLLIOURE Titanium 98



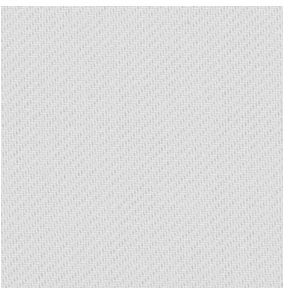
COLLIOURE Noir 12



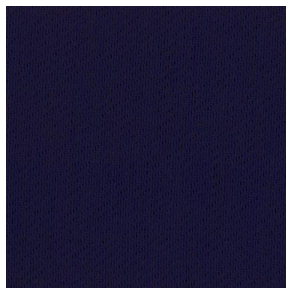
COLLIOURE eucalyptus
117



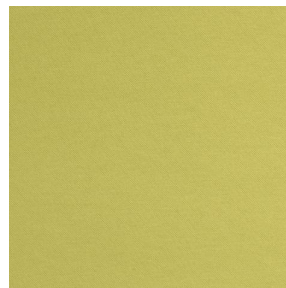
COLLIOURE navy 120



COLLIOURE lin 11



COLLIOURE marine 25



COLLIOURE
Bergamotte 121



COLLIOURE Absinthe
132



(Headquarters) SOTEXPRO - 510 route de Montchal - 42360 PANISSIÈRES - FRANCE - +33 4 77 27 60 60

Non-contractual photos and colors - Indicative fitting - Fitting may vary depending on support selected

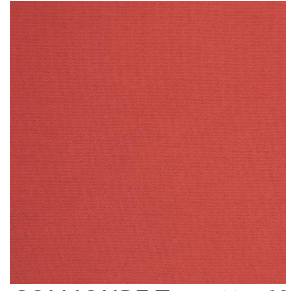
COLLIOURE



COLLIOURE Arctique 58



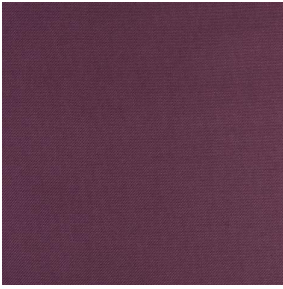
COLLIOURE Saumon
143



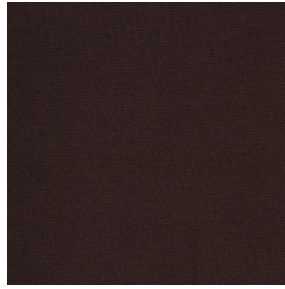
COLLIOURE Tomette 60



COLLIOURE Terre 107



COLLIOURE Aubergine
27



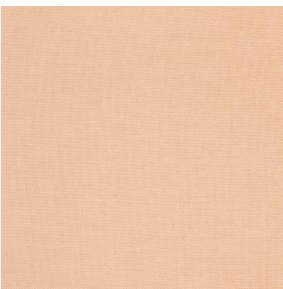
COLLIOURE Cacao 168



COLLIOURE Chataigne
55



COLLIOURE Chamois
111

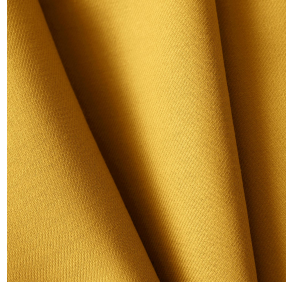
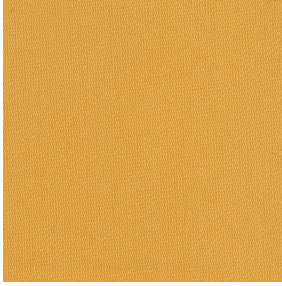


COLLIOURE Pêche 52



(Headquarters) SOTEXPRO - 510 route de Montchal - 42360 PANISSIÈRES - FRANCE - +33 4 77 27 60 60

Non-contractual photos and colors - Indicative fitting - Fitting may vary depending on support selected



COLLIOURE Miel 17

This plain twill fabric comes in a range of several colours.

Technical properties



Flame retardant








Thermal

Applications Roman blinds - Panel curtains - Valences - Curtains - Cushions - Decorative frames

Composition 100% FR polyester

Weight 270 g/m² **Width** 140 cm / 280 cm

Fabric direction Room high or standard direction **Fitting** ↔ cm ↓ cm

Maintenance advice     

Labels France Terre Textile (R016)

Certifications OEKO-TEX STANDARD 100 (CQ 1006/1)

Minimum order 1 linear(s) meter(s)



Technical characteristics

Flame retardant

M1 / EN13773 : 2003 Class 1 / B1 / IMO PASS / UNI 8456 / 9174
Classe Uno

Optical index

Light reflexion : **33 %**

Light absorption : **64 %**

Light transmission : **3 %**

Thermal index

Solar reflexion : **50 %**

Solar absorption : **36 %**

Solar transmission : **14 %**

UV transmission : **1 %**

Gtot : **Gt 41 % Fc 69 %**

Resilience

Lightfastness (units Class/8) **5**

Dimensional Stability (%)

Warp **-3**

Weft **-0.5**

Breaking Elongation

Warp **26**

Weft **28**

Breaking load (daN)

Warp **100**

Weft **160**



(Headquarters) SOTEXPRO - 510 route de Montchal - 42360 PANISSIÈRES - FRANCE - +33 4 77 27 60 60

Non-contractual photos and colors - Indicative fitting - Fitting may vary depending on support selected