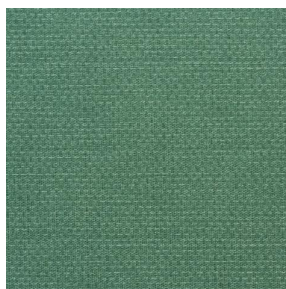


# COMET OSIER 2300



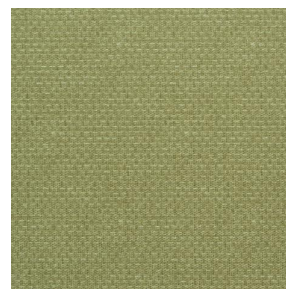
COMET OSIER 2300  
Tempête 179



COMET OSIER 2300  
Romarin 176



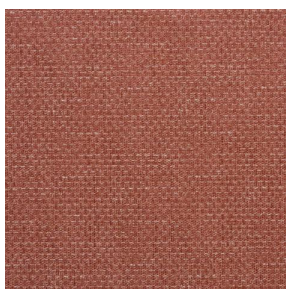
COMET OSIER 2300  
Fenouil 177



COMET OSIER 2300  
Bergamotte 121



COMET OSIER 2300  
Miel 17



COMET OSIER 2300  
Poterie 167



COMET OSIER 2300  
Truffe 189



COMET OSIER 2300  
Ardoise 87



COMET OSIER 2300  
Minéral 157



COMET OSIER 2300  
Poivre 181

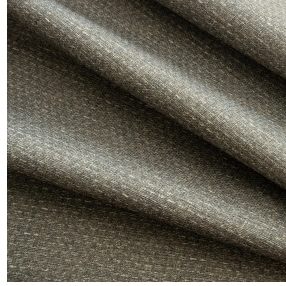
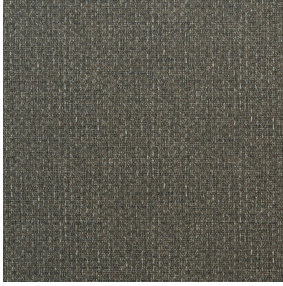


COMET OSIER 2300 Lin  
11



(Headquarters) SOTEXPRO - 510 route de Montchal - 42360 PANISSIÈRES - FRANCE - +33 4 77 27 60 60  
(Showroom) Le LAB' SOTEXPRO - 4 rue du Mail - 75002 PARIS - FRANCE

Non-contractual photos and colors - Indicative fitting - Fitting may vary depending on support selected



# COMET OSIER 2300 Etain 180

Textured blackout printed with a canvas pattern, the occultation is obtained thanks to its white flocked acrylic reverse

## Technical properties

Applications Roman blinds - Panel curtains - Curtains

Composition 100% polyester with white flocked acrylic backing

Weight 390 g/m<sup>2</sup> Width 280 cm

Fabric direction Room high or standard direction Fitting ↔ cm ↓ cm

Maintenance advice     

Minimum order 25 linear(s) meter(s)

## Technical characteristics

Flame retardant

EN13773 : 2003 Class 1 / BS 5867 TYPE B / B1 / IMO PASS /  
UNI 8456 / 9174 Classe Uno

Resilience

Dimensional Stability (%)

Warp 0

Weft 0

Breaking Elongation

Warp 38

Weft 38

Breaking load (daN)

Warp 170

Weft 120



(Headquarters) SOTEXPRO - 510 route de Montchal - 42360 PANISSIÈRES - FRANCE - +33 4 77 27 60 60  
(Showroom) Le LAB' SOTEXPRO - 4 rue du Mail - 75002 PARIS - FRANCE

Non-contractual photos and colors - Indicative fitting - Fitting may vary depending on support selected