

COMET OSIER 2300



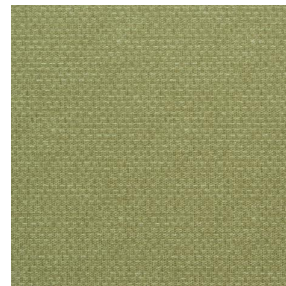
COMET OSIER 2300
Tempête 179



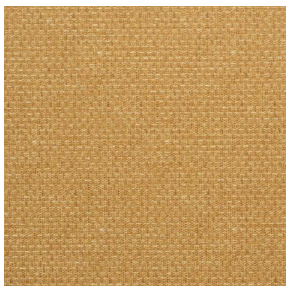
COMET OSIER 2300
Romarin 176



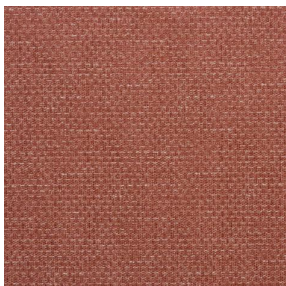
COMET OSIER 2300
Fenouil 177



COMET OSIER 2300
Bergamotte 121



COMET OSIER 2300
Miel 17



COMET OSIER 2300
Poterie 167



COMET OSIER 2300
Ardoise 87



COMET OSIER 2300
Minéral 157



COMET OSIER 2300
Poivre 181



COMET OSIER 2300
Etain 180

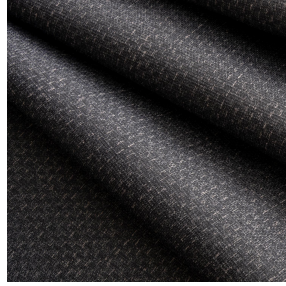
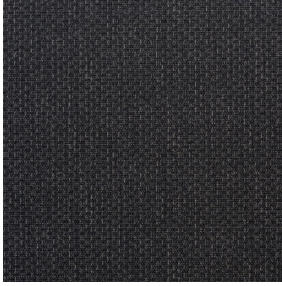


COMET OSIER 2300 Lin
11



(Headquarters) SOTEXPRO - 510 route de Montchal - 42360 PANISSIÈRES - FRANCE - +33 4 77 27 60 60
(Showroom) Le LAB' SOTEXPRO - 4 rue du Mail - 75002 PARIS - FRANCE

Non-contractual photos and colors - Indicative fitting - Fitting may vary depending on support selected



COMET OSIER 2300 Truffe 189

Textured blackout printed with a canvas pattern, the occultation is obtained thanks to its white flocked acrylic reverse

Technical properties

Applications Roman blinds - Panel curtains - Curtains

Composition 100% polyester with white flocked acrylic backing

Weight 390 g/m² Width 280 cm

Fabric direction Room high or standard direction Fitting ↔ cm ↓ cm

Maintenance advice     

Minimum order 25 linear(s) meter(s)

Technical characteristics

Flame retardant

EN13773 : 2003 Class 1 / BS 5867 TYPE B / B1 / IMO PASS /
UNI 8456 / 9174 Classe Uno

Resilience

Dimensional Stability (%)

Warp 0

Weft 0

Breaking Elongation

Warp 38

Weft 38

Breaking load (daN)

Warp 170

Weft 120



(Headquarters) SOTEXPRO - 510 route de Montchal - 42360 PANISSIÈRES - FRANCE - +33 4 77 27 60 60
(Showroom) Le LAB' SOTEXPRO - 4 rue du Mail - 75002 PARIS - FRANCE

Non-contractual photos and colors - Indicative fitting - Fitting may vary depending on support selected