

ETAMINE



ETAMINE Naval 17



ETAMINE Blanc 01



ETAMINE Champagne
02



ETAMINE Ficelle 09



ETAMINE Taupe 95



ETAMINE Anthracite 38



ETAMINE Noir 12



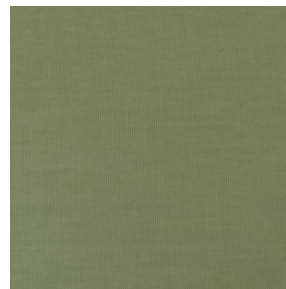
ETAMINE BPI 00



ETAMINE Ardoise 08



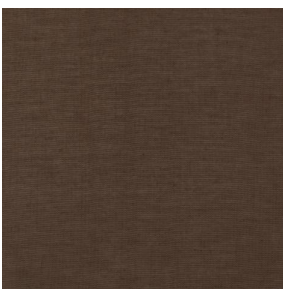
ETAMINE Safran 49



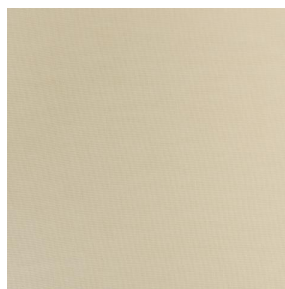
ETAMINE Olive 61



ETAMINE Agrume 69



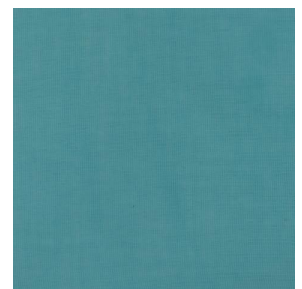
ETAMINE Chocolat 70



ETAMINE Beige 90



ETAMINE Indigo 144



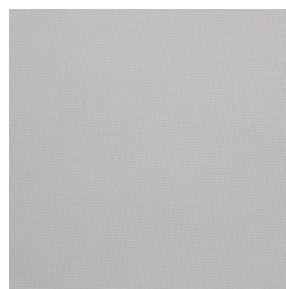
ETAMINE Pacifique 54



ETAMINE Hortensia 134



ETAMINE Cactus 36

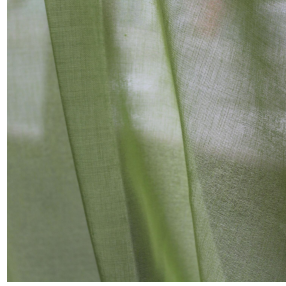
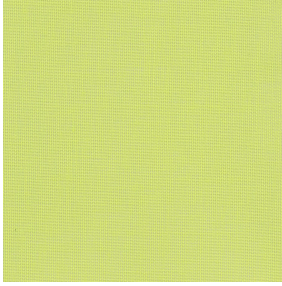


ETAMINE Perle 96



(Headquarters) SOTEXPRO - 510 route de Montchal - 42360 PANISSIÈRES - FRANCE - +33 4 77 27 60 60

Non-contractual photos and colors - Indicative fitting - Fitting may vary depending on support selected



ETAMINE Anis 62

This light and airy sheer curtain comes in several plain colours.

Technical properties



Flame retardant




Sheer

Applications Roman blinds - Panel curtains - Curtains

Composition 100% FR polyester

Weight 95 g/m² Width 300 cm

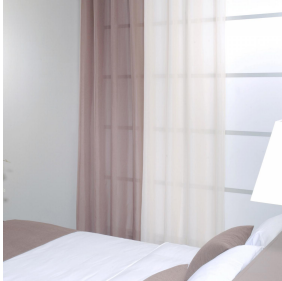
Fabric direction Room high or standard direction Fitting ↔ cm ↓ cm

Maintenance advice     

Labels France Terre Textile (R016)

Certifications OEKO-TEX STANDARD 100 (CQ 1006/1)

Minimum order 1 linear(s) meter(s)



Technical characteristics

Flame retardant	M1 / IMO PASS	
Optical index	Light reflexion :	3 %
	Light absorption :	76 %
	Light transmission :	21 %
Transparent veil	Yes	
Thermal index	Solar reflexion :	23 %
	Solar absorption :	37 %
	Solar transmission :	40 %
	UV transmission :	24 %
	Gtot :	Gt 57 % Fc 81 %
Resilience	Lightfastness (units Class/8)	6
	Dimensional Stability (%)	
	Warp	-2
	Weft	-1
	Breaking Elongation	
	Warp	46
	Weft	13
	Breaking load (daN)	
	Warp	41
	Weft	40



(Headquarters) SOTEXPRO - 510 route de Montchal - 42360 PANISSIÈRES - FRANCE - +33 4 77 27 60 60

Non-contractual photos and colors - Indicative fitting - Fitting may vary depending on support selected