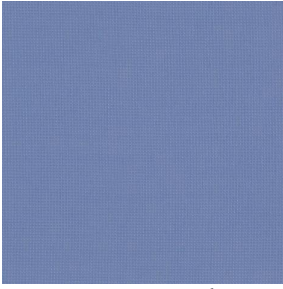
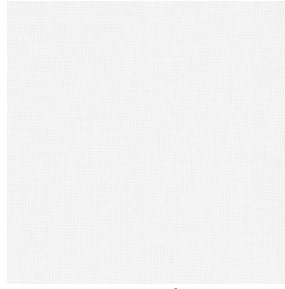


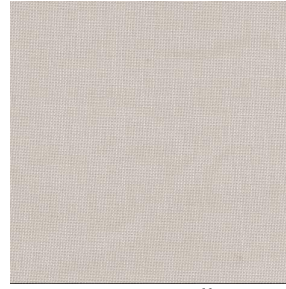
ETAMINE



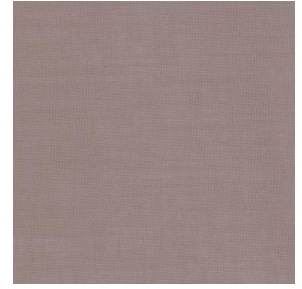
ETAMINE Naval 17



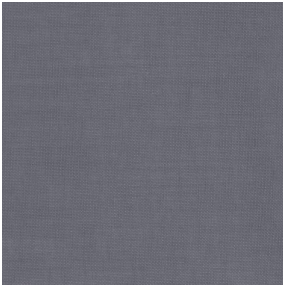
ETAMINE Blanc 01



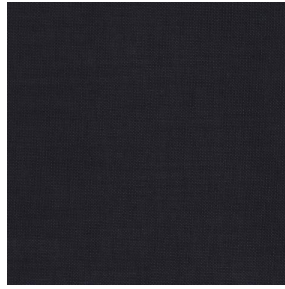
ETAMINE Ficelle 09



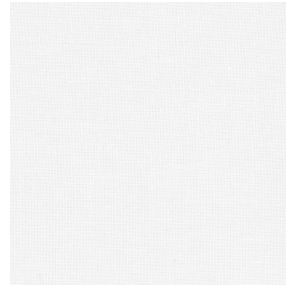
ETAMINE Taupe 95



ETAMINE Anthracite 38



ETAMINE Noir 12



ETAMINE BPI 00



ETAMINE Ardoise 08



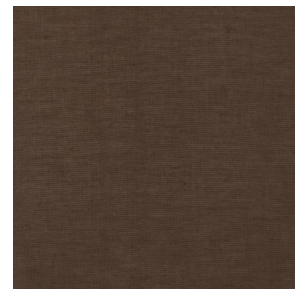
ETAMINE Safran 49



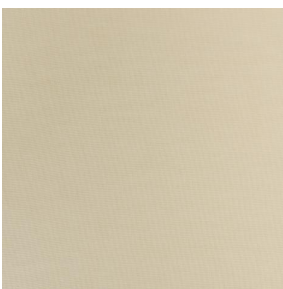
ETAMINE Olive 61



ETAMINE Agrume 69



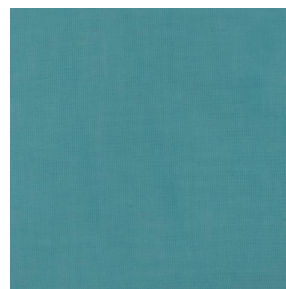
ETAMINE Chocolat 70



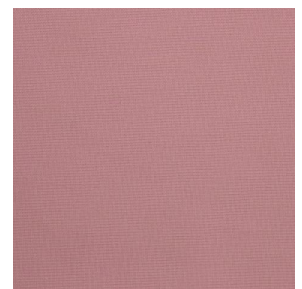
ETAMINE Beige 90



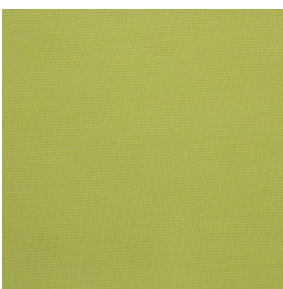
ETAMINE Indigo 144



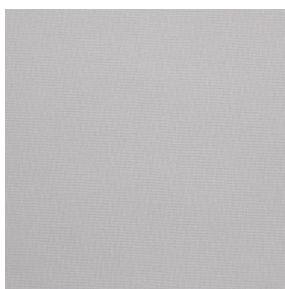
ETAMINE Pacifique 54



ETAMINE Hortensia 134



ETAMINE Cactus 36



ETAMINE Perle 96



(Headquarters) SOTEXPRO - 510 route de Montchal - 42360 PANISSIÈRES - FRANCE - +33 4 77 27 60 60

Non-contractual photos and colors - Indicative fitting - Fitting may vary depending on support selected



ETAMINE Champagne 02

This light and airy sheer curtain comes in several plain colours.

Technical properties



Flame retardant



Sheer

Applications Roman blinds - Panel curtains - Curtains

Composition 100% FR polyester

Weight 95 g/m² Width 300 cm

Fabric direction Room high or standard direction Fitting ↔ cm ↓ cm

Maintenance advice     

Labels France Terre Textile (R016)

Certifications OEKO-TEX STANDARD 100 (CQ 1006/1)

Minimum order 1 linear(s) meter(s)

Technical characteristics

Flame retardant

M1 / EN13773 : 2003 Class 1 / B1 / IMO PASS / UNI 8456 / 9174
Classe Uno

Optical index

Light reflexion :	42 %
Light absorption :	4 %
Light transmission :	54 %

Transparent veil

Yes

Thermal index

Solar reflexion :	43 %
Solar absorption :	3 %
Solar transmission :	54 %
UV transmission :	52 %
Gtot :	Gt 44 % Fc 75 %

Resilience

Lightfastness (units Class/8)	6
Dimensional Stability (%)	
Warp	0
Weft	0
Breaking Elongation	
Warp	46
Weft	13
Breaking load (daN)	
Warp	41
Weft	40



(Headquarters) SOTEXPRO - 510 route de Montchal - 42360 PANISSIÈRES - FRANCE - +33 4 77 27 60 60

Non-contractual photos and colors - Indicative fitting - Fitting may vary depending on support selected