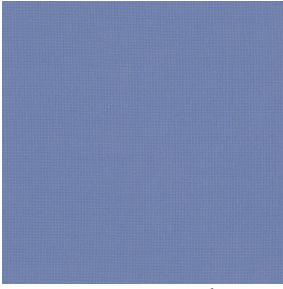
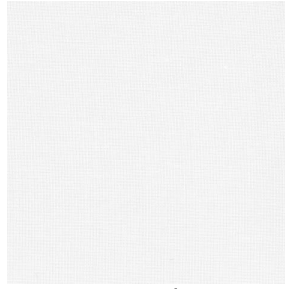


ETAMINE



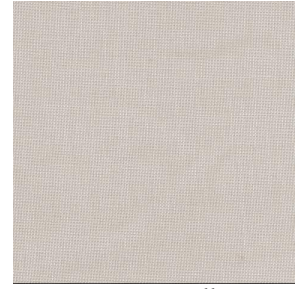
ETAMINE Naval 17



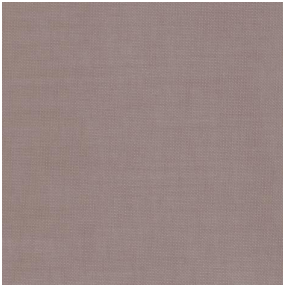
ETAMINE Blanc 01



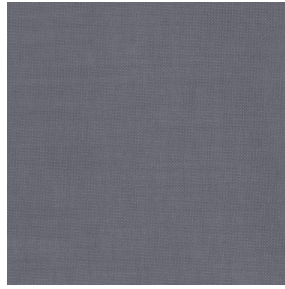
ETAMINE Champagne
02



ETAMINE Ficelle 09



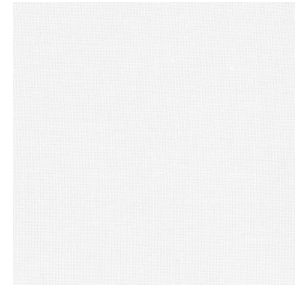
ETAMINE Taupe 95



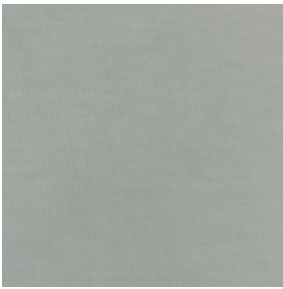
ETAMINE Anthracite 38



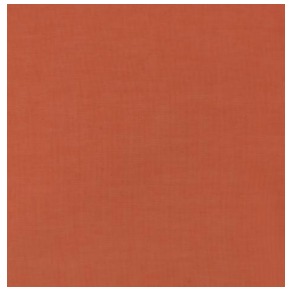
ETAMINE Noir 12



ETAMINE BPI 00



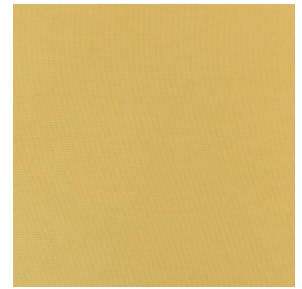
ETAMINE Ardoise 08



ETAMINE Safran 49



ETAMINE Olive 61



ETAMINE Agrume 69



ETAMINE Chocolat 70



ETAMINE Beige 90



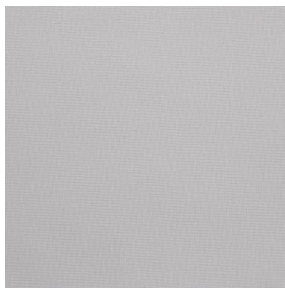
ETAMINE Indigo 144



ETAMINE Hortensia 134



ETAMINE Cactus 36

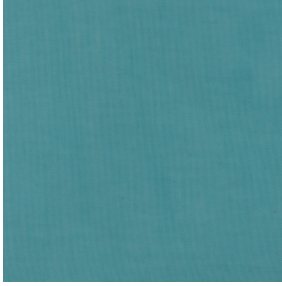


ETAMINE Perle 96



(Headquarters) SOTEXPRO - 510 route de Montchal - 42360 PANISSIÈRES - FRANCE - +33 4 77 27 60 60

Non-contractual photos and colors - Indicative fitting - Fitting may vary depending on support selected



ETAMINE Pacifique 54

This light and airy sheer curtain comes in several plain colours.

Technical properties



Flame retardant



Sheer

Applications Roman blinds - Panel curtains - Curtains

Composition 100% FR polyester

Weight 95 g/m² 285 g/ml Width 300 cm

Fabric direction Room high or standard direction Fitting ↔ cm ↓ cm

Maintenance advice

Labels France Terre Textile (R016)

Certifications OEKO-TEX STANDARD 100 (CQ 1006/1)

Minimum order 1 linear(s) meter(s)

Technical characteristics

Flame retardant	M1 / EN13773 : 2003 Class 1 / B1 / IMO PASS / UNI 8456 / 9174 Classe Uno	
Optical index	Light reflexion :	33 %
	Light absorption :	16 %
	Light transmission :	51 %
Transparent veil	Yes	
Thermal index	Solar reflexion :	34 %
	Solar absorption :	14 %
	Solar transmission :	52 %
	UV transmission :	41 %
	Gtot :	Gt 47 % Fc 79 %
Resilience	Lightfastness (units Class/8)	4
	Dimensional Stability (%)	
	Warp	0
	Weft	0
	Breaking Elongation	
	Warp	46
	Weft	13
	Breaking load (daN)	
	Warp	41
	Weft	40



(Headquarters) SOTEXPRO - 510 route de Montchal - 42360 PANISSIÈRES - FRANCE - +33 4 77 27 60 60

Non-contractual photos and colors - Indicative fitting - Fitting may vary depending on support selected