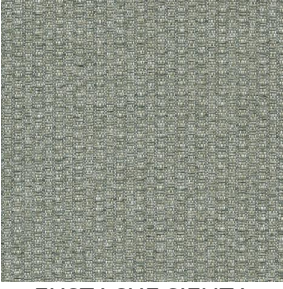


EUSTACHE SIENTA

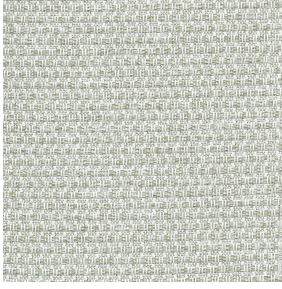


EUSTACHE SIENTA
Ficelle 09



(Headquarters) SOTEXPRO - 510 route de Montchal - 42360 PANISSIÈRES - FRANCE - +33 4 77 27 60 60
(Showroom) Le LAB' SOTEXPRO - 4 rue du Mail - 75002 PARIS - FRANCE

Non-contractual photos and colors - Indicative fitting - Fitting may vary depending on support selected



EUSTACHE SIENTA Naturel 26

Semi-plain fabric, inspired by ancient, rustic styles and traditional weaving with a beautiful material effect.

Technical properties



Flame retardant



Acoustic



Recycled fabrics

Applications Roman blinds - Panel curtains - Curtains - Cushions

Composition 40% recycled polyester FR / 60% polyester FR

Weight 330 g/m² Width 290 cm

Fabric direction Room high or standard direction Fitting ↔ cm ↓ cm

Maintenance advice

Labels France Terre Textile (R016)

Certifications OEKO-TEX STANDARD 100 Recyclé (CQ 1006/2)

Minimum order 1 linear(s) meter(s)

Technical characteristics

Flame retardant

M1

Acoustic

Noise reduction coefficient (NRC) : **0.88**

Weighted sound absorption coefficient (a_w) : **0.95**

Acoustic absorption class (a_w) : **A**

Resilience

Lightfastness (units Class/8) **5**

Pilling **4-5**

Dimensional Stability (%)

Warp **1**

Weft **1**

Martindale (Cycles) **18000**

Breaking Elongation

Warp **27**

Weft **22**

Breaking load (daN)

Warp **110**

Weft **100**



(Headquarters) SOTEXPRO - 510 route de Montchal - 42360 PANISSIÈRES - FRANCE - +33 4 77 27 60 60
(Showroom) Le LAB' SOTEXPRO - 4 rue du Mail - 75002 PARIS - FRANCE

Non-contractual photos and colors - Indicative fitting - Fitting may vary depending on support selected