

IMMERSION SIENTA



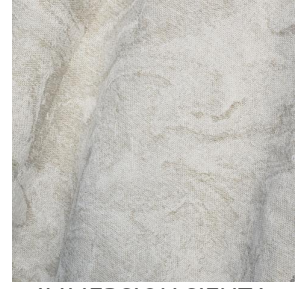
IMMERSION SIENTA
Mousse 92



IMMERSION SIENTA
Jade 116



IMMERSION SIENTA
Sisal 140

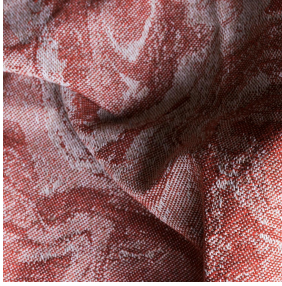


IMMERSION SIENTA
Naturel 26



(Headquarters) SOTEXPRO - 510 route de Montchal - 42360 PANISSIÈRES - FRANCE - +33 4 77 27 60 60
(Showroom) Le LAB' SOTEXPRO - 4 rue du Mail - 75002 PARIS - FRANCE

Non-contractual photos and colors - Indicative fitting - Fitting may vary depending on support selected



IMMERSION SIENTA

Châtaigne 55

SIENTA Jacquard flame retardant

Technical properties








Flame retardant Recycled fabrics

Applications Roman blinds - Panel curtains - Bedspreads - Bed runners - Curtains - Cushions

Composition 43% recycled polyester FR / 57% polyester FR

Weight 350 g/m² **Width** 280 cm

Fabric direction Room high or standard direction **Fitting** ↔ cm ↓ cm

Maintenance advice     

Labels France Terre Textile (R016)

Minimum order 1 linear(s) meter(s)

Technical characteristics

Flame retardant

M1



(Headquarters) SOTEXPRO - 510 route de Montchal - 42360 PANISSIÈRES - FRANCE - +33 4 77 27 60 60
(Showroom) Le LAB' SOTEXPRO - 4 rue du Mail - 75002 PARIS - FRANCE

Non-contractual photos and colors - Indicative fitting - Fitting may vary depending on support selected