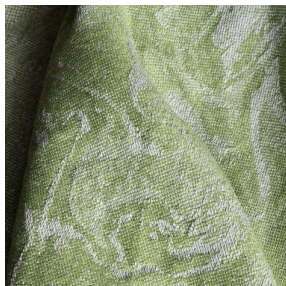
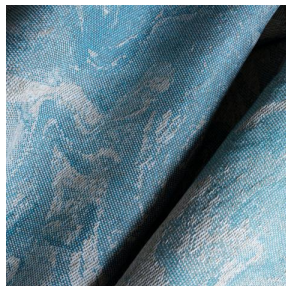


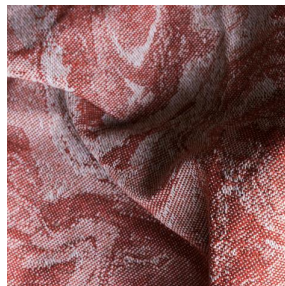
# IMMERSION SIENTA



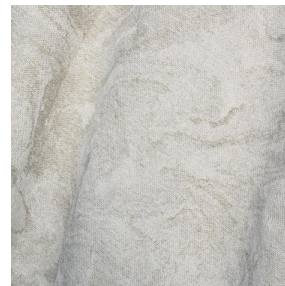
IMMERSION SIENTA  
Mousse 92



IMMERSION SIENTA  
Jade 116



IMMERSION SIENTA  
Châtaigne 55



IMMERSION SIENTA  
Naturel 26



(Headquarters) SOTEXPRO - 510 route de Montchal - 42360 PANISSIÈRES - FRANCE - +33 4 77 27 60 60  
(Showroom) Le LAB' SOTEXPRO - 4 rue du Mail - 75002 PARIS - FRANCE

*Non-contractual photos and colors - Indicative fitting - Fitting may vary depending on support selected*



# IMMERSION SIENTA Sisal 140

SIENTA Jacquard flame retardant

## Technical properties








Flame retardant Recycled fabrics

**Applications** Roman blinds - Panel curtains - Bedspreads - Bed runners - Curtains - Cushions

**Composition** 43% recycled polyester FR / 57% polyester FR

**Weight** 350 g/m<sup>2</sup> **Width** 280 cm

**Fabric direction** Room high or standard direction **Fitting** ↔ cm ↓ cm

**Maintenance advice**     

**Labels** France Terre Textile (R016)

**Minimum order** 1 linear(s) meter(s)

## Technical characteristics

---

Flame retardant

M1



(Headquarters) SOTEXPRO - 510 route de Montchal - 42360 PANISSIÈRES - FRANCE - +33 4 77 27 60 60  
(Showroom) Le LAB' SOTEXPRO - 4 rue du Mail - 75002 PARIS - FRANCE

Non-contractual photos and colors - Indicative fitting - Fitting may vary depending on support selected