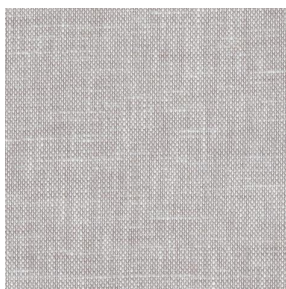


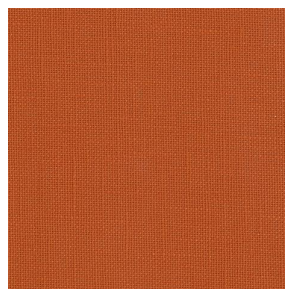
# LINOSA



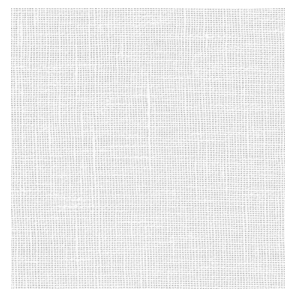
LINOSA Lin 11



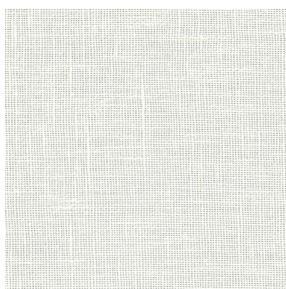
LINOSA Miel 17



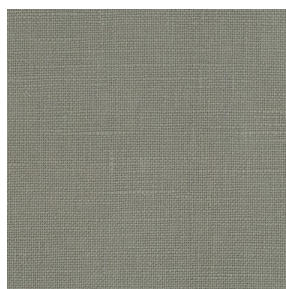
LINOSA Terracotta 65



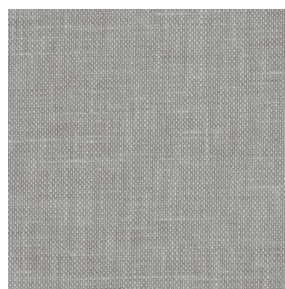
LINOSA Blanc 01



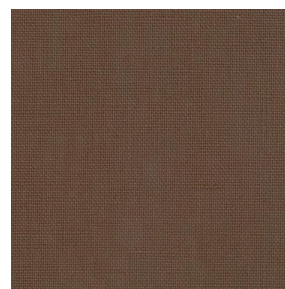
LINOSA Ivoire 02



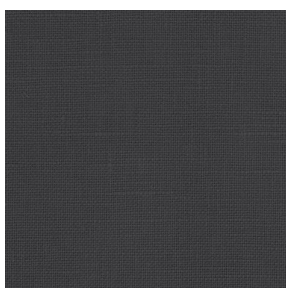
LINOSA Souris 31



LINOSA Havane 44



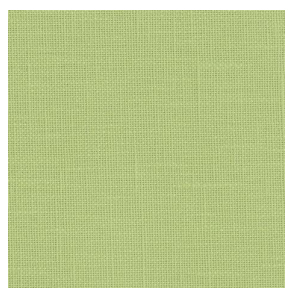
LINOSA Taupe 95



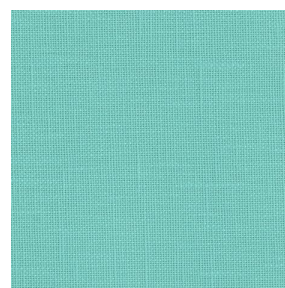
LINOSA Titanium 98



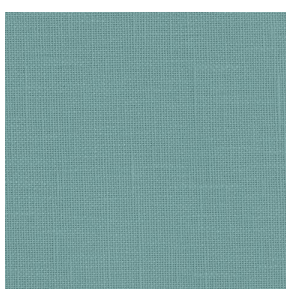
LINOSA Bergamotte  
121



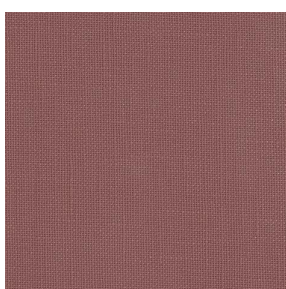
LINOSA Tilleul 103



LINOSA Lagon 110



LINOSA Glacier 43

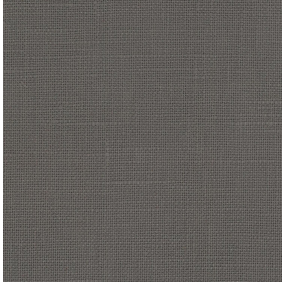


LINOSA Muscade 175



(Headquarters) SOTEXPRO - 510 route de Montchal - 42360 PANISSIÈRES - FRANCE - +33 4 77 27 60 60

*Non-contractual photos and colors - Indicative fitting - Fitting may vary depending on support selected*



# LINOSA Anthracite 38

This plain, light-filtering fabric resembling linen is captivating and perfect for natural and warm décor.

## Technical properties



Flame retardant

**Applications** Roman blinds - Panel curtains - Curtains - Cushions - Decorative frames

**Composition** 100% FR polyester

**Weight** 260 g/m<sup>2</sup> 728 g/m<sup>2</sup> **Width** 280 cm

**Fabric direction** Room high or standard direction **Fitting** ↔ cm ↓ cm

**Maintenance advice** ✖ ✖ ☹ ☹

**Labels** France Terre Textile (R016)

**Certifications** OEKO-TEX STANDARD 100 (CQ 1006/1)

**Minimum order** 1 linear(s) meter(s)



## Technical characteristics

Flame retardant	M1 / B1 / IMO PASS / UNI 8456 / 9174 Classe Uno
Optical index	Light reflexion : <b>9 %</b>
	Light absorption : <b>86 %</b>
	Light transmission : <b>5 %</b>
Thermal index	Solar reflexion : <b>36 %</b>
	Solar absorption : <b>45 %</b>
	Solar transmission : <b>19 %</b>
	UV transmission : <b>8 %</b>
	Gtot : <b>Gt 45 % Fc 77 %</b>
Resilience	Lightfastness (units Class/8) <b>3</b>
	Pilling <b>1-2</b>
	Dimensional Stability (%)
	Warp <b>-2</b>
	Weft <b>-0.5</b>
	Martindale (Cycles) <b>30000</b>
	Breaking Elongation
	Warp <b>25</b>
	Weft <b>25</b>
	Breaking load (daN)
Warp <b>140</b>	
Weft <b>100</b>	



(Headquarters) SOTEXPRO - 510 route de Montchal - 42360 PANISSIÈRES - FRANCE - +33 4 77 27 60 60

Non-contractual photos and colors - Indicative fitting - Fitting may vary depending on supports selected