

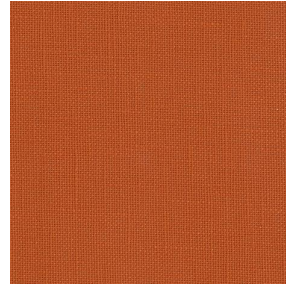
LINOSA



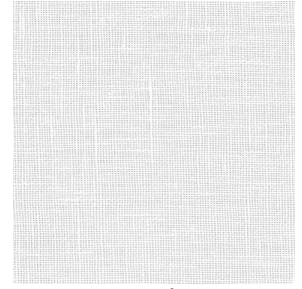
LINOSA Lin 11



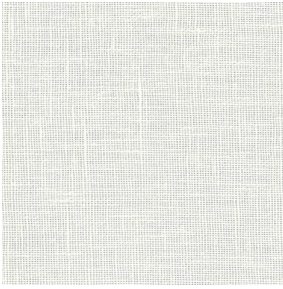
LINOSA Miel 17



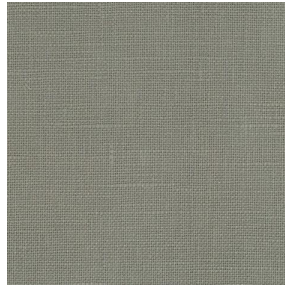
LINOSA Terracotta 65



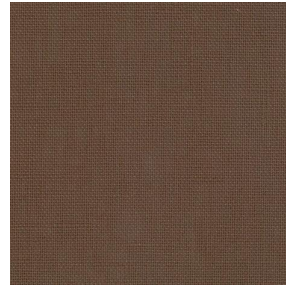
LINOSA Blanc 01



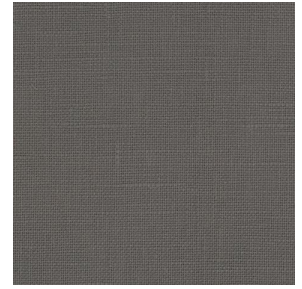
LINOSA Ivoire 02



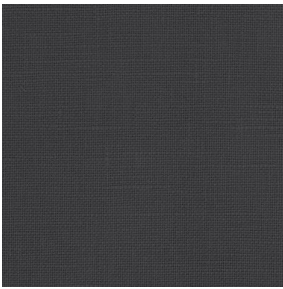
LINOSA Souris 31



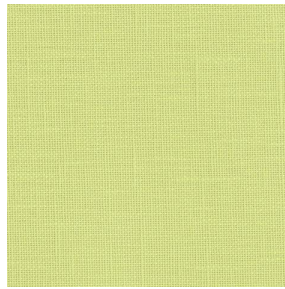
LINOSA Taupe 95



LINOSA Anthracite 38



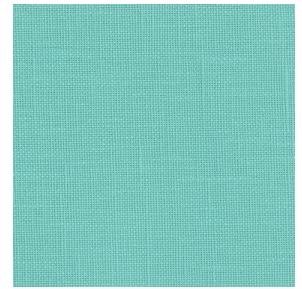
LINOSA Titanium 98



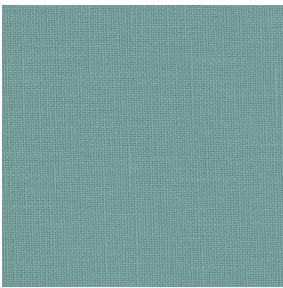
LINOSA Bergamotte
121



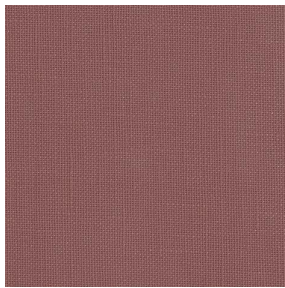
LINOSA Tilleul 103



LINOSA Lagon 110



LINOSA Glacier 43

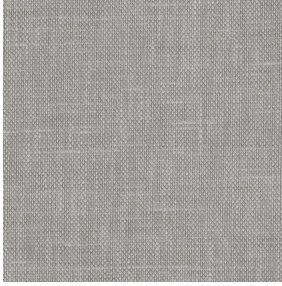


LINOSA Muscade 175



(Headquarters) SOTEXPRO - 510 route de Montchal - 42360 PANISSIÈRES - FRANCE - +33 4 77 27 60 60

Non-contractual photos and colors - Indicative fitting - Fitting may vary depending on support selected



LINOSA Havane 44

This plain, light-filtering fabric resembling linen is captivating and perfect for natural and warm décor.

Technical properties



Flame retardant

Applications Roman blinds - Panel curtains - Curtains - Cushions - Decorative frames

Composition 100% FR polyester

Weight 260 g/m² 728 g/m² **Width** 280 cm

Fabric direction Room high or standard direction **Fitting** ↔ cm ↓ cm

Maintenance advice ✖ ✖ ☹ ☹

Labels France Terre Textile (R016)

Certifications OEKO-TEX STANDARD 100 (CQ 1006/1)

Minimum order 1 linear(s) metter(s)



Technical characteristics

Flame retardant

M1 / B1 / IMO PASS / UNI 8456 / 9174 Classe Uno

Optical index

Light reflexion : **33 %**

Light absorption : **51 %**

Light transmission : **16 %**

Thermal index

Solar reflexion : **46 %**

Solar absorption : **28 %**

Solar transmission : **26 %**

UV transmission : **14 %**

Gtot : **Gt 42 % Fc 71 %**

Resilience

Lightfastness (units Class/8) **6**

Pilling **1-2**

Dimentional Stability (%)

Warp **-2**

Weft **-0.5**

Martindale (Cycles) **30000**

Breaking Elongation

Warp **25**

Weft **25**

Breaking load (daN)

Warp **140**

Weft **100**



(Headquarters) SOTEXPRO - 510 route de Montchal - 42360 PANISSIÈRES - FRANCE - +33 4 77 27 60 60

Non-contractual photos and colors - Indicative fitting - Fitting may vary depending on supports selected