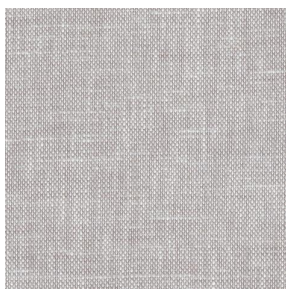


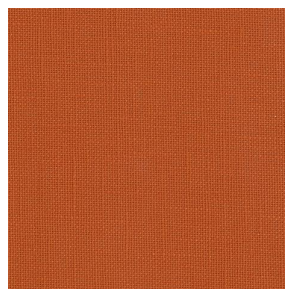
LINOSA



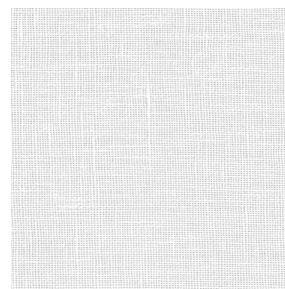
LINOSA Lin 11



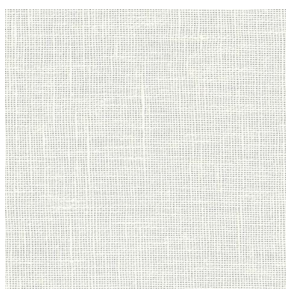
LINOSA Miel 17



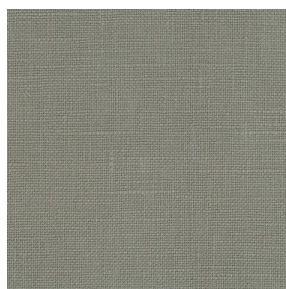
LINOSA Terracotta 65



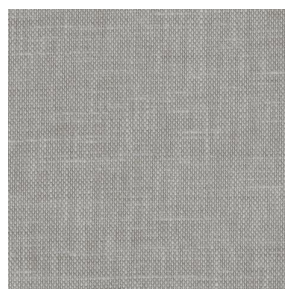
LINOSA Blanc 01



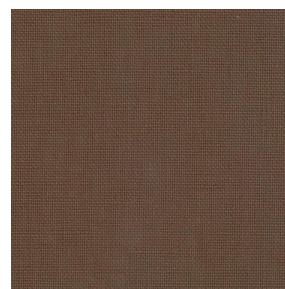
LINOSA Ivoire 02



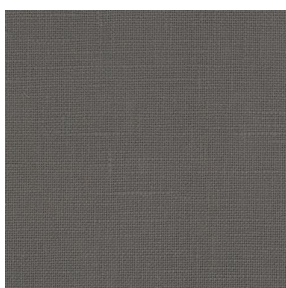
LINOSA Souris 31



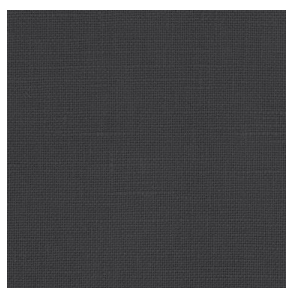
LINOSA Havane 44



LINOSA Taupe 95



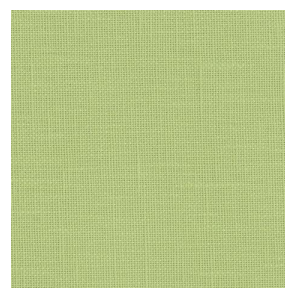
LINOSA Anthracite 38



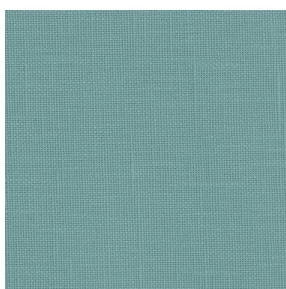
LINOSA Titanium 98



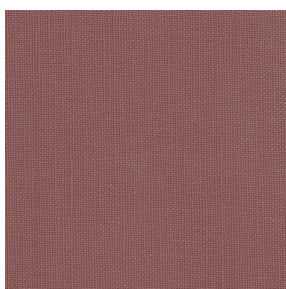
LINOSA Bergamotte
121



LINOSA Tilleul 103



LINOSA Glacier 43

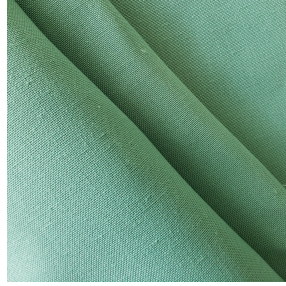
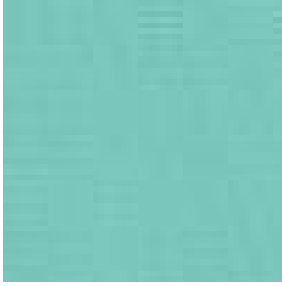


LINOSA Muscade 175



(Headquarters) SOTEXPRO - 510 route de Montchal - 42360 PANISSIÈRES - FRANCE - +33 4 77 27 60 60

Non-contractual photos and colors - Indicative fitting - Fitting may vary depending on support selected



LINOSA Lagon 110

This plain, light-filtering fabric resembling linen is captivating and perfect for natural and warm décor.

Technical properties



Flame retardant

Applications Roman blinds - Panel curtains - Curtains - Cushions

Composition 100% FR polyester

Weight 260 g/m² 728 g/m² Width 280 cm

Fabric direction Room High Direction Fitting ↔ cm ↓ cm

Maintenance advice

Labels France Terre Textile (R016)

Certifications OEKO-TEX STANDARD 100 (CQ 1006/1)

Minimum order 1 linear(s) meter(s)

Technical characteristics

Flame retardant

M1 / B1 / IMO PASS / UNI 8456 / 9174 Classe Uno

Optical index

Light reflexion : 33 %

Light absorption : 51 %

Light transmission : 16 %

Thermal index

Solar reflexion : 46 %

Solar absorption : 28 %

Solar transmission : 26 %

UV transmission : 14 %

Gtot : Gt 42 % Fc 71 %

Resilience

Lightfastness (units Class/8) 6

Pilling 1-2

Dimensional Stability (%)

Warp -2

Weft -0.5

Martindale (Cycles) 30000

Breaking Elongation

Warp 25

Weft 25

Breaking load (daN)

Warp 140

Weft 100



(Headquarters) SOTEXPRO - 510 route de Montchal - 42360 PANISSIÈRES - FRANCE - +33 4 77 27 60 60

Non-contractual photos and colors - Indicative fitting - Fitting may vary depending on supports selected