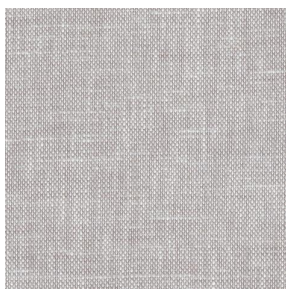


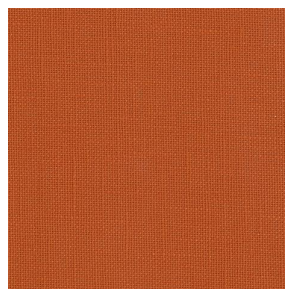
# LINOSA



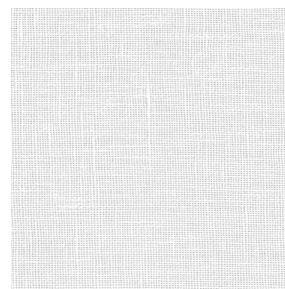
LINOSA Lin 11



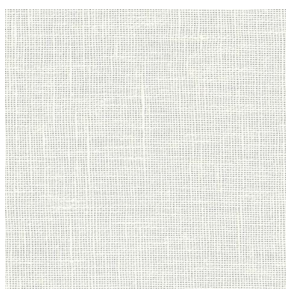
LINOSA Miel 17



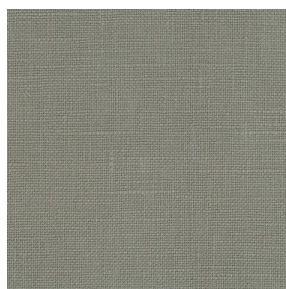
LINOSA Terracotta 65



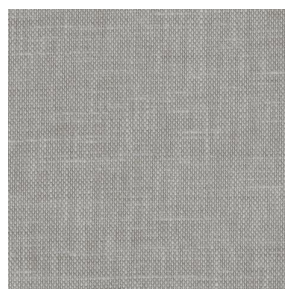
LINOSA Blanc 01



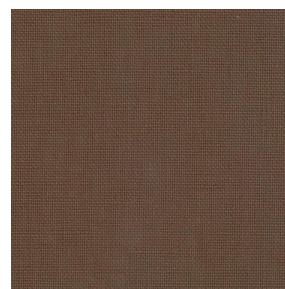
LINOSA Ivoire 02



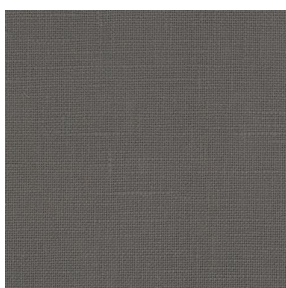
LINOSA Souris 31



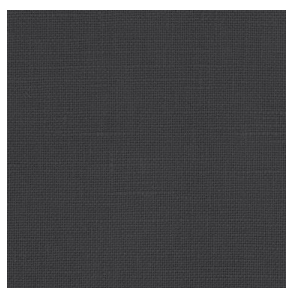
LINOSA Havane 44



LINOSA Taupe 95



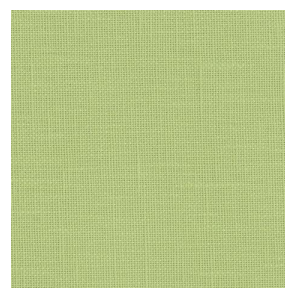
LINOSA Anthracite 38



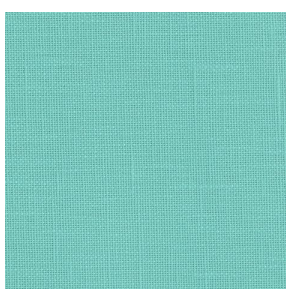
LINOSA Titanium 98



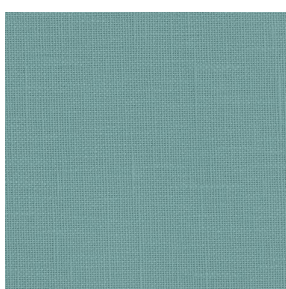
LINOSA Bergamotte  
121



LINOSA Tilleul 103



LINOSA Lagon 110

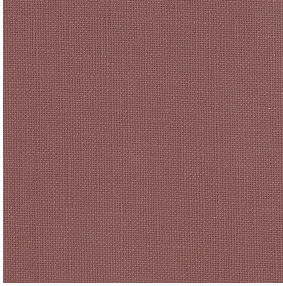


LINOSA Glacier 43



(Headquarters) SOTEXPRO - 510 route de Montchal - 42360 PANISSIÈRES - FRANCE - +33 4 77 27 60 60  
(Showroom) Le LAB' SOTEXPRO - 4 rue du Mail - 75002 PARIS - FRANCE

*Non-contractual photos and colors - Indicative fitting - Fitting may vary depending on support selected*



# LINOSA Muscade 175

This plain, light-filtering fabric resembling linen is captivating and perfect for natural and warm décor.

## Technical properties



Flame retardant

Applications Roman blinds - Panel curtains - Curtains - Cushions

Composition 100% FR polyester

Weight 260 g/m<sup>2</sup> Width 280 cm

Fabric direction Room High Direction Fitting ↔ cm ↓ cm

Maintenance advice    

Labels France Terre Textile (R016)

Certifications OEKO-TEX STANDARD 100 (CQ 1006/1)

Minimum order 1 linear(s) meter(s)

## Technical characteristics

Flame retardant	M1 / B1 / IMO PASS / UNI 8456 / 9174 Classe Uno		
Optical index	Light reflexion :	33 %	
	Light absorption :	51 %	
	Light transmission :	16 %	
Thermal index	Solar reflexion :	46 %	
	Solar absorption :	28 %	
	Solar transmission :	26 %	
	UV transmission :	13 %	
	Gtot :	Gt 42 % Fc 71 %	
Resilience	Lightfastness (units Class/8)	6	
	Pilling	1-2	
	Dimensional Stability (%)	Warp	-2
		Weft	-0.5
	Martindale (Cycles)	30000	
	Breaking Elongation	Warp	25
		Weft	25
	Breaking load (daN)	Warp	140
		Weft	100



(Headquarters) SOTEXPRO - 510 route de Montchal - 42360 PANISSIÈRES - FRANCE - +33 4 77 27 60 60  
(Showroom) Le LAB' SOTEXPRO - 4 rue du Mail - 75002 PARIS - FRANCE

Non-contractual photos and colors - Indicative fitting - Fitting may vary depending on supports selected