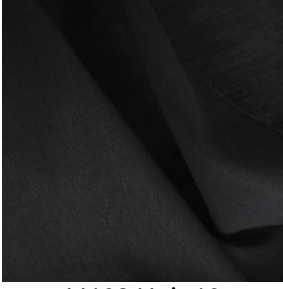
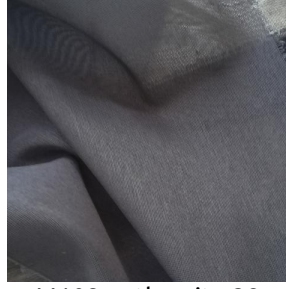


M102



M102 Noir 10



M102 anthracite 38



M102 ficelle 09



M102 lin 11



(Headquarters) SOTEXPRO - 510 route de Montchal - 42360 PANISSIÈRES - FRANCE - +33 4 77 27 60 60

Non-contractual photos and colors - Indicative fitting - Fitting may vary depending on support selected



M102 Blanc 01

Thick white sheer with material effect.

Technical properties



Flame retardant



Sheer

Applications Roman blinds - Panel curtains - Curtains

Composition 100% polyester / Trevira CS

Weight 90 g/m² 270 g/ml Width 300 cm

Fabric direction Room high or standard direction Fitting ↔ cm ↓ cm

Maintenance advice

Labels France Terre Textile (R016)

Minimum order 1 linear(s) meter(s)

Technical characteristics

Flame retardant	M1 / B1	
Optical index	Light reflexion :	36 %
	Light absorption :	4 %
	Light transmission :	60 %
Transparent veil	Yes	
Thermal index	Solar reflexion :	37 %
	Solar absorption :	3 %
	Solar transmission :	60 %
	UV transmission :	60 %
	Gtot :	Gt 46 % Fc 78 %
Resilience	Lightfastness (units Class/8)	6
	Dimensional Stability (%)	
	Warp	-0,5
	Weft	0
	Breaking Elongation	
	Warp	47
	Weft	18
	Breaking load (daN)	
	Warp	33
	Weft	62



(Headquarters) SOTEXPRO - 510 route de Montchal - 42360 PANISSIÈRES - FRANCE - +33 4 77 27 60 60

Non-contractual photos and colors - Indicative fitting - Fitting may vary depending on support selected