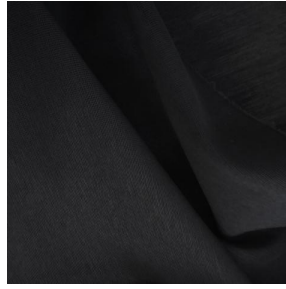


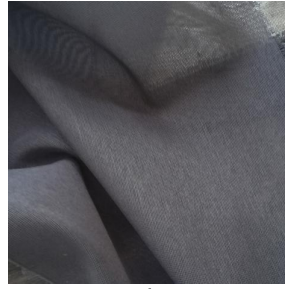
M102



M102 Blanc 01



M102 Noir 10



M102 anthracite 38



M102 ficelle 09



(Headquarters) SOTEXPRO - 510 route de Montchal - 42360 PANISSIÈRES - FRANCE - +33 4 77 27 60 60

Non-contractual photos and colors - Indicative fitting - Fitting may vary depending on support selected



M102 lin 11

Technical properties



Flame retardant




Sheer

Applications Roman blinds - Panel curtains - Curtains

Composition 100% FR polyester

Weight 90 g/m² Width 300 cm

Fabric direction Room high or standard direction Fitting ↔ cm ↓ cm

Maintenance advice     

Labels France Terre Textile (R016)

Minimum order 1 linear(s) meter(s)

Technical characteristics

Flame retardant	M1 / B1	
Optical index	Light reflexion :	19 %
	Light absorption :	27 %
	Light transmission :	54 %
Transparent veil	Yes	
Thermal index	Solar reflexion :	26 %
	Solar absorption :	15 %
	Solar transmission :	59 %
	UV transmission :	51 %
	Gtot :	Gt 50 % Fc 84 %
Resilience	Lightfastness (units Class/8)	6
	Dimensional Stability (%)	
	Warp	-0,5
	Weft	0
	Breaking Elongation	
	Warp	47
	Weft	18
	Breaking load (daN)	
	Warp	33
	Weft	62



(Headquarters) SOTEXPRO - 510 route de Montchal - 42360 PANISSIÈRES - FRANCE - +33 4 77 27 60 60

Non-contractual photos and colors - Indicative fitting - Fitting may vary depending on support selected