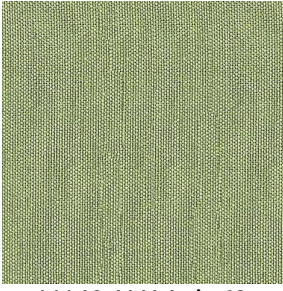
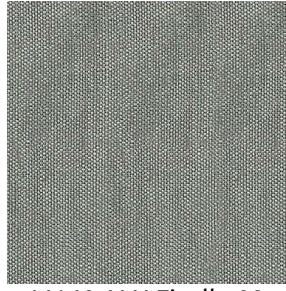


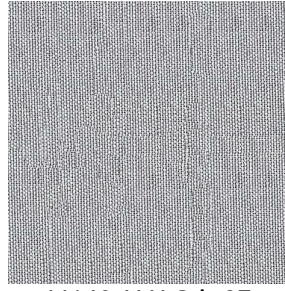
# M140 ALU



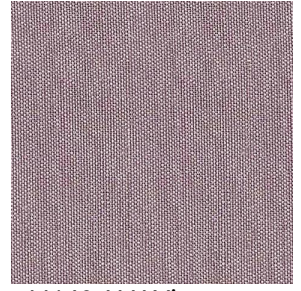
M140 ALU Anis 62



M140 ALU Ficelle 09



M140 ALU Gris 97



M140 ALU Vieux rose  
64

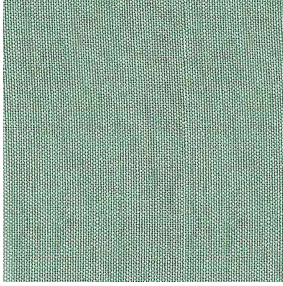


M140 ALU Lin 11



(Headquarters) SOTEXPRO - 510 route de Montchal - 42360 PANISSIÈRES - FRANCE - +33 4 77 27 60 60  
(Showroom) Le LAB' SOTEXPRO - 4 rue du Mail - 75002 PARIS - FRANCE

*Non-contractual photos and colors - Indicative fitting - Fitting may vary depending on support selected*



# M140 ALU Menthe 122

## Technical properties



Flame retardant



Thermal



Sheer

Applications Roman blinds - Panel curtains - Curtains

Composition 100% aluminized FR polyester

Weight 70 g/m<sup>2</sup> Width 280 cm

Fabric direction Room high or standard direction Fitting ↔ cm ↓ cm

Maintenance advice    

Minimum order 1 linear(s) meter(s)

## Technical characteristics

Flame retardant	M1 / IMO PASS	
Optical index	Light reflexion :	32 %
	Light absorption :	40 %
	Light transmission :	28 %
Transparent veil	Yes	
Thermal index	Solar reflexion :	34 %
	Solar absorption :	36 %
	Solar transmission :	30 %
	UV transmission :	28 %
	Gtot :	Gt 46 % Fc 78 %
Resilience	Lightfastness (units Class/8)	6
	Dimensional Stability (%)	
	Warp	-0,5
	Weft	0
	Breaking Elongation	
	Warp	14
	Weft	33
	Breaking load (daN)	
	Warp	45
	Weft	41



(Headquarters) SOTEXPRO - 510 route de Montchal - 42360 PANISSIÈRES - FRANCE - +33 4 77 27 60 60  
(Showroom) Le LAB' SOTEXPRO - 4 rue du Mail - 75002 PARIS - FRANCE

Non-contractual photos and colors - Indicative fitting - Fitting may vary depending on support selected