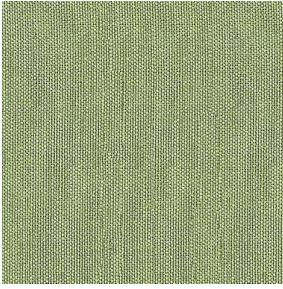
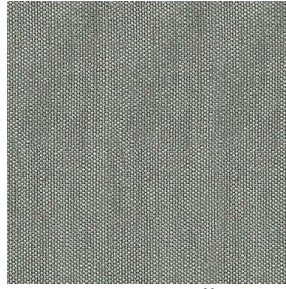


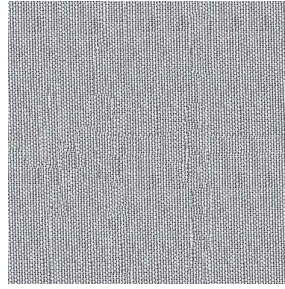
M140 ALU



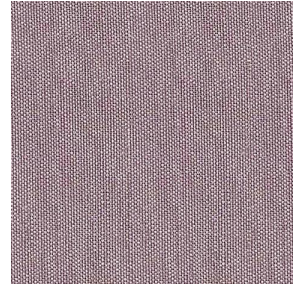
M140 ALU Anis 62



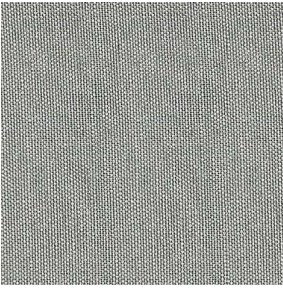
M140 ALU Ficelle 09



M140 ALU Gris 97



M140 ALU Vieux rose
64

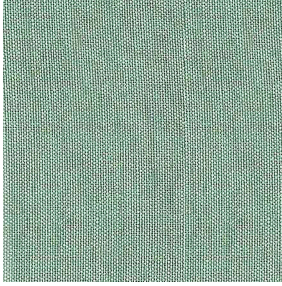


M140 ALU Lin 11



(Headquarters) SOTEXPRO - 510 route de Montchal - 42360 PANISSIÈRES - FRANCE - +33 4 77 27 60 60

Non-contractual photos and colors - Indicative fitting - Fitting may vary depending on support selected



M140 ALU Menthe 122

Technical properties



Flame retardant



Thermal




Sheer

Applications Roman blinds - Panel curtains - Curtains

Composition 100% aluminized FR polyester

Weight 70 g/m² Width 280 cm

Fabric direction Room high or standard direction Fitting ↔ cm ↓ cm

Maintenance advice     

Minimum order 1 linear(s) meter(s)

Technical characteristics

Flame retardant	M1 / IMO PASS
Optical index	Light reflexion : 32 %
	Light absorption : 40 %
	Light transmission : 28 %
Transparent veil	Yes
Thermal index	Solar reflexion : 34 %
	Solar absorption : 36 %
	Solar transmission : 30 %
	UV transmission : 28 %
	Gtot : Gt 46 % Fc 78 %
Resilience	Lightfastness (units Class/8) 6
	Dimensional Stability (%)
	Warp -0,5
	Weft 0
	Breaking Elongation
	Warp 14
	Weft 33
	Breaking load (daN)
	Warp 45
	Weft 41



(Headquarters) SOTEXPRO - 510 route de Montchal - 42360 PANISSIÈRES - FRANCE - +33 4 77 27 60 60

Non-contractual photos and colors - Indicative fitting - Fitting may vary depending on support selected