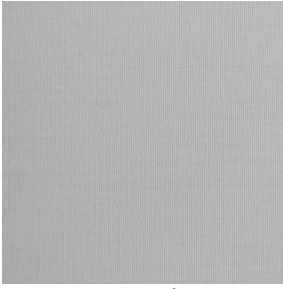
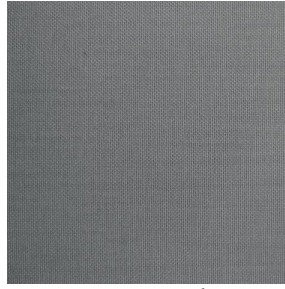


# MIRAGE 2



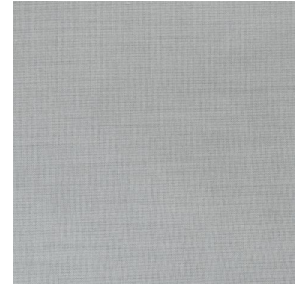
MIRAGE 2 Blanc 01



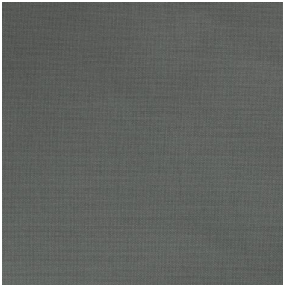
MIRAGE 2 Perle 96



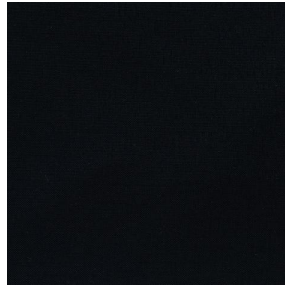
MIRAGE 2 Crème 02



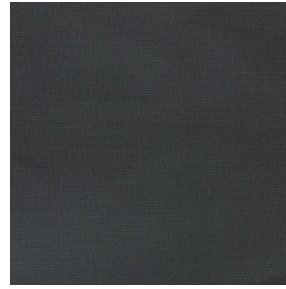
MIRAGE 2 Mastic 48



MIRAGE 2 Sienne 29



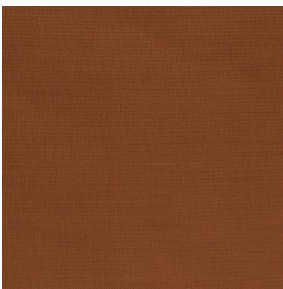
MIRAGE 2 Noir 10



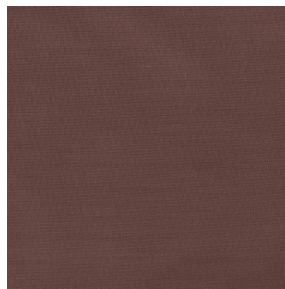
MIRAGE 2 Taupe 95



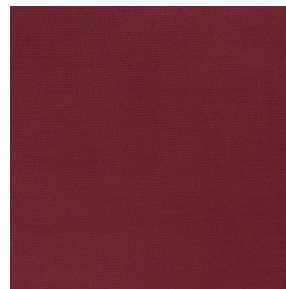
MIRAGE 2 Or 94



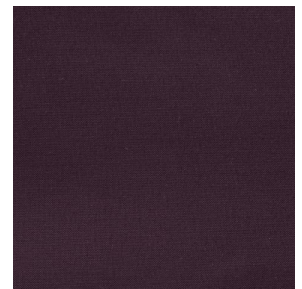
MIRAGE 2 Terre 107



MIRAGE 2 Chamois 111



MIRAGE 2 Bordeaux 04



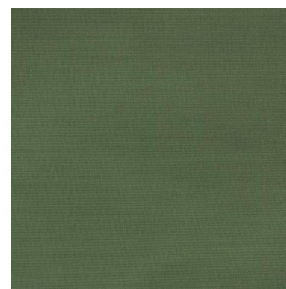
MIRAGE 2 Aubergine 27



MIRAGE 2 Bergamotte  
121



MIRAGE 2 Tilleul 103



MIRAGE 2 Kaki 148



MIRAGE 2 Emeraude 88

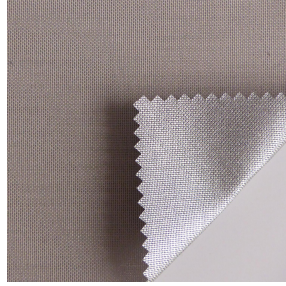


MIRAGE 2 Indigo 144



(Headquarters) SOTEXPRO - 510 route de Montchal - 42360 PANISSIÈRES - FRANCE - +33 4 77 27 60 60  
(Showroom) Le LAB' SOTEXPRO - 4 rue du Mail - 75002 PARIS - FRANCE

Non-contractual photos and colors - Indicative fitting - Fitting may vary depending on support selected



# MIRAGE 2 Anthracite 38

This plain fabric with aluminised backing is perfect for sunlight protection, Fabric cannot be installed in wet areas. Dry cleaning required. Please note: this fabric is not suitable for horizontal installation.

## Technical properties



Flame retardant



Thermal

**Applications** Roman blinds - Roller blinds - Panel curtains - Curtains

**Composition** 100% Aluminized Polyester

**Weight** 200 g/m<sup>2</sup> **Width** 280 cm

**Fabric direction** Room high or standard direction **Fitting** ↔ cm ↓ cm

**Maintenance advice** ☒ ☒ ☒ ☒

**Minimum order** 1 linear(s) meter(s)

## Technical characteristics

Flame retardant	M1 / IMO PASS		
Optical index	Light reflexion :	55 %	
	Light absorption :	38 %	
	Light transmission :	7 %	
Thermal index	Solar reflexion :	56 %	
	Solar absorption :	37 %	
	Solar transmission :	7 %	
	UV transmission :	5 %	
	Gtot :	Gt 39 % Fc 66 %	
Resilience	Lightfastness (units Class/8)	6	
	Dimensional Stability (%)	Warp	0
		Weft	-0.5
	Breaking Elongation	Warp	25
		Weft	23
	Breaking load (daN)	Warp	110
		Weft	140



(Headquarters) SOTEXPRO - 510 route de Montchal - 42360 PANISSIÈRES - FRANCE - +33 4 77 27 60 60  
(Showroom) Le LAB' SOTEXPRO - 4 rue du Mail - 75002 PARIS - FRANCE

Non-contractual photos and colors - Indicative fitting - Fitting may vary depending on support selected