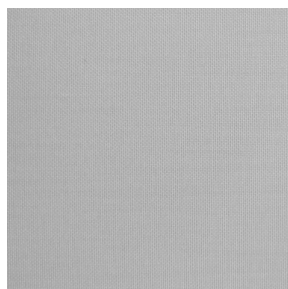
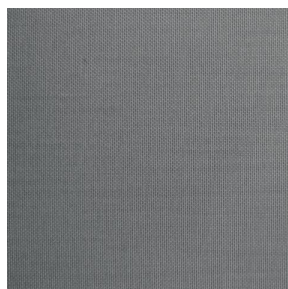


MIRAGE 2



MIRAGE 2 Blanc 01



MIRAGE 2 Perle 96



MIRAGE 2 Crème 02



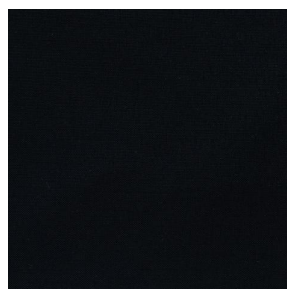
MIRAGE 2 Mastic 48



MIRAGE 2 Sienne 29



MIRAGE 2 Anthracite 38



MIRAGE 2 Noir 10



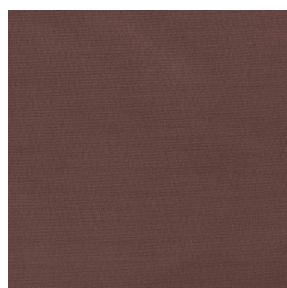
MIRAGE 2 Taupe 95



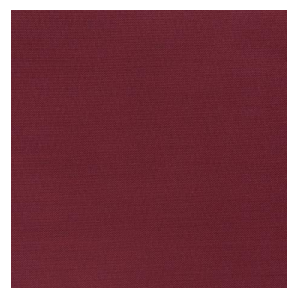
MIRAGE 2 Or 94



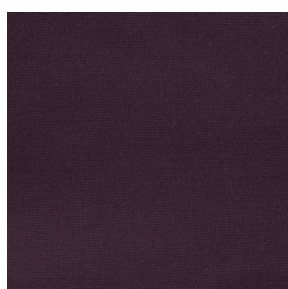
MIRAGE 2 Terre 107



MIRAGE 2 Chamois 111



MIRAGE 2 Bordeaux 04



MIRAGE 2 Aubergine 27



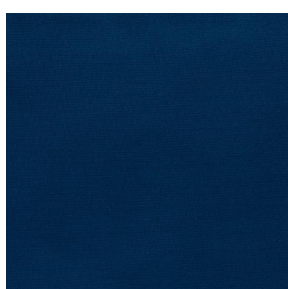
MIRAGE 2 Bergamotte
121



MIRAGE 2 Tilleul 103



MIRAGE 2 Emeraude 88



MIRAGE 2 Indigo 144



sotexpro

(Headquarters) SOTEXPRO - 510 route de Montchal - 42360 PANISSIÈRES - FRANCE - +33 4 77 27 60 60
(Showroom) Le LAB' SOTEXPRO - 4 rue du Mail - 75002 PARIS - FRANCE

Non-contractual photos and colors - Indicative fitting - Fitting may vary depending on support selected



MIRAGE 2 Kaki 148

This plain fabric with aluminised backing is perfect for sunlight protection, Fabric cannot be installed in wet areas. Dry cleaning required. Please note: this fabric is not suitable for horizontal installation.

Technical properties



Flame retardant



Thermal

Applications Roman blinds - Roller blinds - Panel curtains - Curtains

Composition 100% Aluminized Polyester

Weight 200 g/m² **Width** 280 cm

Fabric direction Room high or standard direction **Fitting** ↔ cm ↓ cm

Maintenance advice ☒ ☒ ☒ ☒

Minimum order 1 linear(s) meter(s)

Technical characteristics

| | | |
|-----------------|-------------------------------|-----------------|
| Flame retardant | M1 / IMO PASS | |
| Optical index | Light reflexion : | 55 % |
| | Light absorption : | 38 % |
| | Light transmission : | 7 % |
| Thermal index | Solar reflexion : | 56 % |
| | Solar absorption : | 37 % |
| | Solar transmission : | 7 % |
| | UV transmission : | 5 % |
| | Gtot : | Gt 39 % Fc 66 % |
| Resilience | Lightfastness (units Class/8) | 6 |
| | Dimensional Stability (%) | |
| | Warp | 0 |
| | Weft | -0.5 |
| | Breaking Elongation | |
| | Warp | 25 |
| | Weft | 23 |
| | Breaking load (daN) | |
| | Warp | 110 |
| Weft | 140 | |



(Headquarters) SOTEXPRO - 510 route de Montchal - 42360 PANISSIÈRES - FRANCE - +33 4 77 27 60 60
(Showroom) Le LAB' SOTEXPRO - 4 rue du Mail - 75002 PARIS - FRANCE

Non-contractual photos and colors - Indicative fitting - Fitting may vary depending on supports selected