

NOCLIN MURA 2334



NOCLIN MURA 2334
Ivoire 115



NOCLIN MURA 2334
Dune 170



NOCLIN MURA 2334
Savane 185



NOCLIN MURA 2334
Rose 129



NOCLIN MURA 2334
Grenat 56



NOCLIN MURA 2334
Terre 107



NOCLIN MURA 2334
Cassis 97



NOCLIN MURA 2334
Olive 61



NOCLIN MURA 2334
Turquoise 53



NOCLIN MURA 2334
Saphir 106



NOCLIN MURA 2334
Glacier 43



NOCLIN MURA 2334
Mastic 48

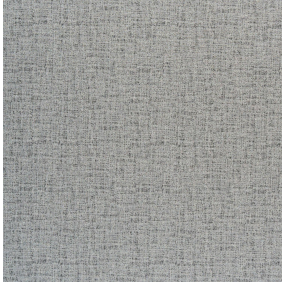


NOCLIN MURA 2334
Fusain 71



(Headquarters) SOTEXPRO - 510 route de Montchal - 42360 PANISSIÈRES - FRANCE - +33 4 77 27 60 60
(Showroom) Le LAB' SOTEXPRO - 4 rue du Mail - 75002 PARIS - FRANCE

Non-contractual photos and colors - Indicative fitting - Fitting may vary depending on support selected



NOCLIN MURA 2334

Minéral 157

False plain design printed on our Blackout double-side Noclin, the Mura design is inspired by the asperities and shades of a wall aged by time as to create a subtle material effect.

Technical properties

Applications Roman blinds - Panel curtains - Curtains

Composition Polyester enduction acrylique

Weight 380 g/m² Width 280 cm

Fabric direction Room High Direction Fitting ↔ cm ↓ cm

Maintenance advice    

Minimum order 1 linear(s) meter(s)

Technical characteristics

Flame retardant	B1 / IMO PASS	
Optical index	Light reflexion :	53 %
	Light absorption :	47 %
	Light transmission :	0 %
Thermal index	Solar reflexion :	64 %
	Solar absorption :	36 %
	Solar transmission :	0 %
	UV transmission :	0 %
	Gtot :	Gt 36 % Fc 61 %
Resilience	Lightfastness (units Class/8)	4
	Dimensional Stability (%)	
	Warp	-1
	Weft	-1
	Breaking Elongation	
	Warp	48
	Weft	72
	Breaking load (daN)	
	Warp	51
Weft	84	



(Headquarters) SOTEXPRO - 510 route de Montchal - 42360 PANISSIÈRES - FRANCE - +33 4 77 27 60 60
(Showroom) Le LAB' SOTEXPRO - 4 rue du Mail - 75002 PARIS - FRANCE

Non-contractual photos and colors - Indicative fitting - Fitting may vary depending on supports selected