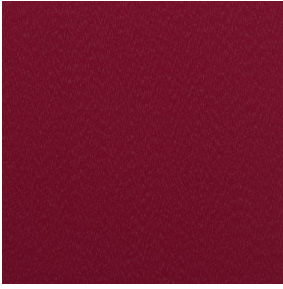
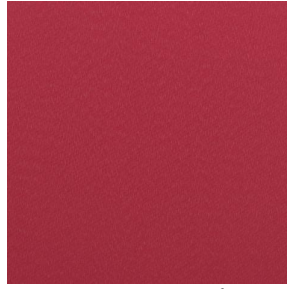


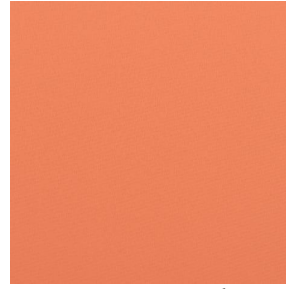
NOCTIS UNI



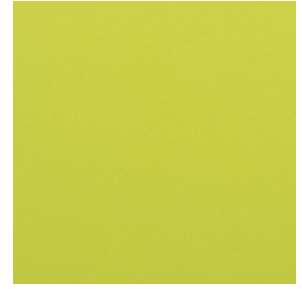
NOCTIS UNI Cassis 97



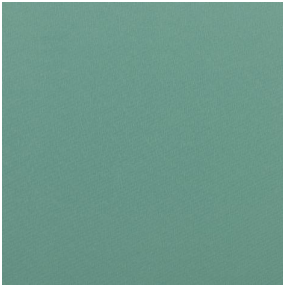
NOCTIS UNI Framboise
81



NOCTIS UNI Mandarine
15



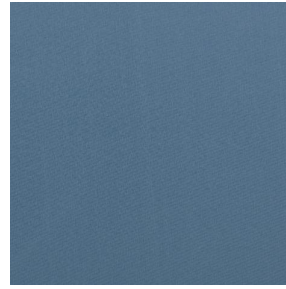
NOCTIS UNI Agrume 69



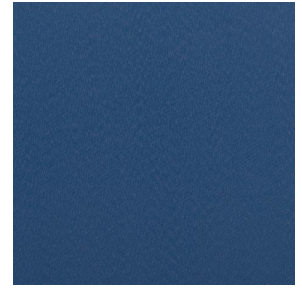
NOCTIS UNI Emeraude
88



NOCTIS UNI Ardoise 87



NOCTIS UNI Lavande 89



NOCTIS UNI Océan 91



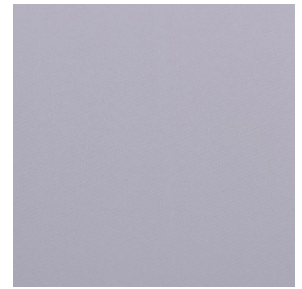
NOCTIS UNI Marine 25



NOCTIS UNI Ecume 82



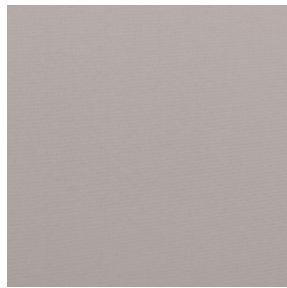
NOCTIS UNI Crème 02



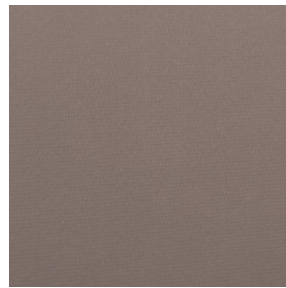
NOCTIS UNI Perle 96



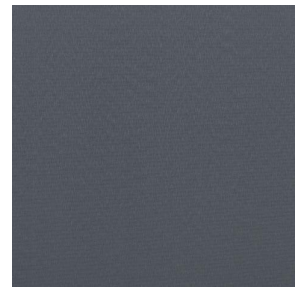
NOCTIS UNI Mastic 48



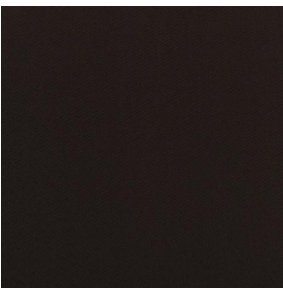
NOCTIS UNI Lin 11



NOCTIS UNI Sienna 29



NOCTIS UNI Anthracite
38

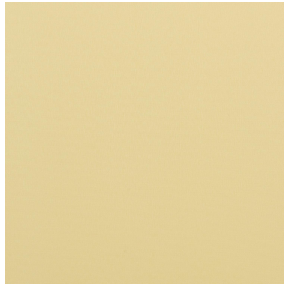


NOCTIS UNI Graphite 77



(Headquarters) SOTEXPRO - 510 route de Montchal - 42360 PANISSIÈRES - FRANCE - +33 4 77 27 60 60
(Showroom) Le LAB' SOTEXPRO - 4 rue du Mail - 75002 PARIS - FRANCE

Non-contractual photos and colors - Indicative fitting - Fitting may vary depending on support selected



NOCTIS UNI Abricot 93

This plain fabric is a classic of our range, it is available in several colors. NOCTIS UNI is a flame retardant and antibacterial blackout fabric. It kills 99% of staphylococcus aureus and klebsiella pneumoniae bacteria (antibacterial action only on Noctis uni color gray flocked back). It does not release any biocidal product into the water when washing the fabric.

Technical properties



Flame retardant



Antibacterial

Applications Roman blinds - Roller blinds - Panel curtains - Lining - Curtains

Composition 100% polyester with gray flocked acrylic backing

Weight 330 g/m² Width 200 cm

Fabric direction Room high or standard direction Fitting ↔ cm ↓ cm

Maintenance advice

Labels France Terre Textile (R016)

Minimum order 1 linear(s) meter(s)

Technical characteristics

Flame retardant	M1 / B1 / IMO PASS / UNI 8456 / 9174 Classe Uno
Acoustic	Noise reduction coefficient (NRC) : 0.28
	Weighted sound absorption coefficient (a _w) : 0.20
	Acoustic absorption class (a _w) : E
Antibacterial	Yes
Optical index	Light reflexion : 33 %
	Light absorption : 67 %
	Light transmission : 0 %
Thermal index	Solar reflexion : 34 %
	Solar absorption : 66 %
	Solar transmission : 0 %
	UV transmission : 0 %
	Gtot : Gt 46 % Fc 77 %
Resilience	Lightfastness (units Class/8) 6
	Pilling 5
	Dimensional Stability (%)
	Warp -0,5
	Weft 0
	Martindale (Cycles) 35000
	Breaking Elongation
	Warp 20
	Weft 24
	Breaking load (daN)
Warp 53	
Weft 63	



(Headquarters) SOTEXPRO - 510 route de Montchal - 42360 PANISSIÈRES - FRANCE - +33 4 77 27 60 60
(Showroom) Le LAB' SOTEXPRO - 4 rue du Mail - 75002 PARIS - FRANCE

Non-contractual photos and colors - Indicative fitting - Fitting may vary depending on supports selected