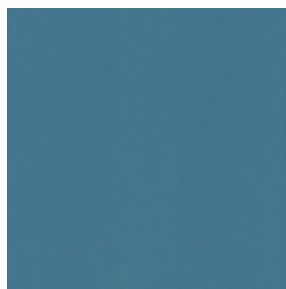


NOCTURNE



NOCTURNE Océan 91



NOCTURNE Arctique 58



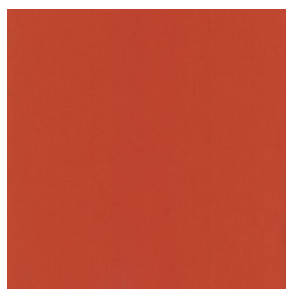
NOCTURNE Cyan 90



NOCTURNE Mousse 92



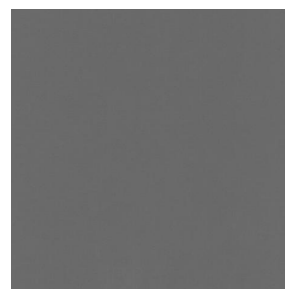
NOCTURNE Abricot 08



NOCTURNE Orange 15



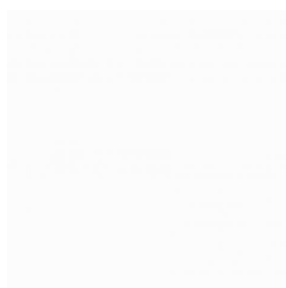
NOCTURNE Fuchsia 33



NOCTURNE Sienne 29



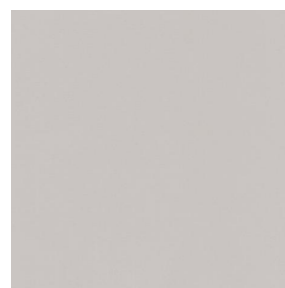
NOCTURNE Perle 96



NOCTURNE Grisé 03



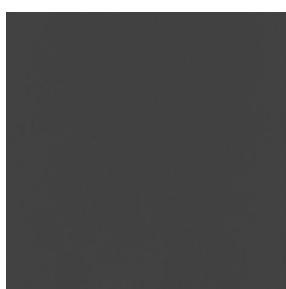
NOCTURNE Crème 02



NOCTURNE Mastic 48



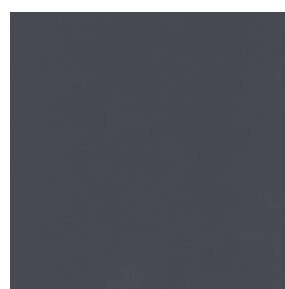
NOCTURNE Brun 23



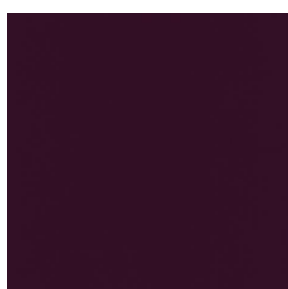
NOCTURNE Taupe 95



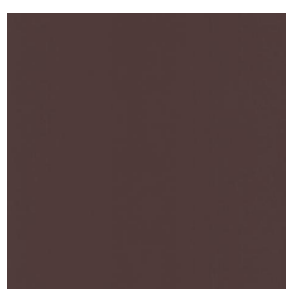
NOCTURNE Noir 10



NOCTURNE anthracite
38



NOCTURNE aubergine
27



NOCTURNE Chamois
111



NOCTURNE Bordeaux
04



NOCTURNE Rubis 59



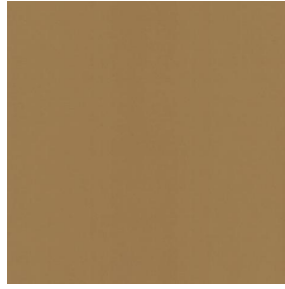
(Headquarters) SOTEXPRO - 510 route de Montchal - 42360 PANISSIÈRES - FRANCE - +33 4 77 27 60 60
(Showroom) Le LAB' SOTEXPRO - 4 rue du Mail - 75002 PARIS - FRANCE

Non-contractual photos and colors - Indicative fitting - Fitting may vary depending on support selected

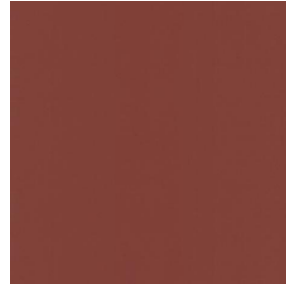
NOCTURNE



NOCTURNE Saumon
143



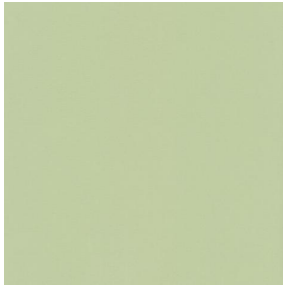
NOCTURNE Or 94



NOCTURNE Terre 107



NOCTURNE Amande 75



NOCTURNE
Bergamotte 121



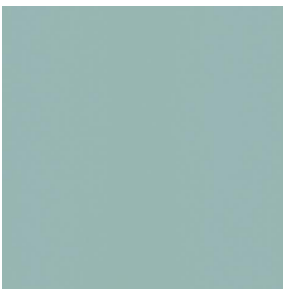
NOCTURNE Tilleul 103



NOCTURNE Prairie 125



NOCTURNE Sapin 126



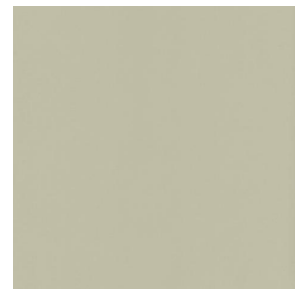
NOCTURNE Ecume 82



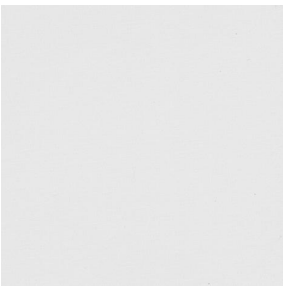
NOCTURNE Beige 63



NOCTURNE Mordoré
133



NOCTURNE Galet 147



NOCTURNE BPI 00



(Headquarters) SOTEXPRO - 510 route de Montchal - 42360 PANISSIÈRES - FRANCE - +33 4 77 27 60 60
(Showroom) Le LAB' SOTEXPRO - 4 rue du Mail - 75002 PARIS - FRANCE

Non-contractual photos and colors - Indicative fitting - Fitting may vary depending on support selected

NOCTURNE absinthe 132

This plain fabric blocks out light very effectively and is available in a wide variety of colours.

Technical properties



Flame retardant



Thermal

Applications Roman blinds - Panel curtains - Lining - Curtains

Composition 100% polyester with white flocked acrylic backing

Weight 280 g/m² **Width** 280 cm

Fabric direction Room high or standard direction **Fitting** ↔ cm ↓ cm

Maintenance advice

Minimum order 1 linear(s) meter(s)

Technical characteristics

| | | | |
|-----------------|-------------------------------------|-----------------|------|
| Flame retardant | M1 / BS 5867 TYPE C / B1 / IMO PASS | | |
| Optical index | Light reflexion : | 71 % | |
| | Light absorption : | 29 % | |
| | Light transmission : | 0 % | |
| Thermal index | Solar reflexion : | 66 % | |
| | Solar absorption : | 34 % | |
| | Solar transmission : | 0 % | |
| | UV transmission : | 0 % | |
| | Gtot : | Gt 35 % Fc 60 % | |
| Resilience | Lightfastness (units Class/8) | 5 | |
| | Pilling | 3-4 | |
| | Dimensional Stability (%) | Warp | -0,5 |
| | | Weft | 0 |
| | Martindale (Cycles) | 40000 | |
| | Breaking Elongation | Warp | 19 |
| | | Weft | 22 |
| | Breaking load (daN) | Warp | 37 |
| | | Weft | 57 |



(Headquarters) SOTEXPRO - 510 route de Montchal - 42360 PANISSIÈRES - FRANCE - +33 4 77 27 60 60
(Showroom) Le LAB' SOTEXPRO - 4 rue du Mail - 75002 PARIS - FRANCE

Non-contractual photos and colors - Indicative fitting - Fitting may vary depending on supports selected