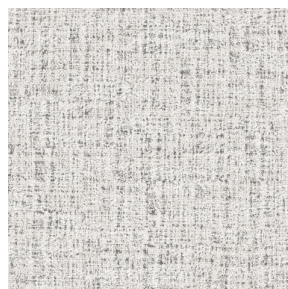


# NOCTURNE MURA 2334



NOCTURNE MURA 2334  
Minéral 157



NOCTURNE MURA 2334  
Mastic 48



NOCTURNE MURA 2334  
Dune 170



NOCTURNE MURA 2334  
Olive 61



NOCTURNE MURA 2334  
Savane 185



NOCTURNE MURA 2334  
Glacier 43



NOCTURNE MURA 2334  
Saphir 106



NOCTURNE MURA 2334  
Grenat 56



NOCTURNE MURA 2334  
Noir 10

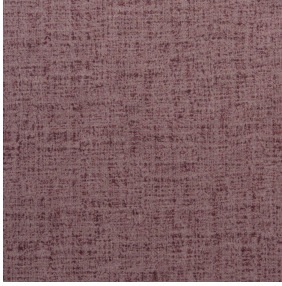


NOCTURNE MURA 2334  
Terre 107



(Headquarters) SOTEXPRO - 510 route de Montchal - 42360 PANISSIÈRES - FRANCE - +33 4 77 27 60 60  
(Showroom) Le LAB' SOTEXPRO - 4 rue du Mail - 75002 PARIS - FRANCE

*Non-contractual photos and colors - Indicative fitting - Fitting may vary depending on support selected*



# NOCTURNE MURA 2334

## Rose 129

False plain design printed on our blackout Nocturne, the Mura design is inspired by the asperities and shades of a wall aged by time as to create a subtle material effect.

### Technical properties



Flame retardant








Thermal

Applications Roman blinds - Panel curtains - Lining - Curtains

Composition 100% polyester with white flocced acrylic backing

Weight 280 g/m<sup>2</sup> Width 280 cm

Fabric direction Room high or standard direction Fitting ↔ cm ↓ cm

Maintenance advice     

Minimum order 1 linear(s) meter(s)



## Technical characteristics

Flame retardant	M1 / BS 5867 TYPE C / B1 / IMO PASS		
Optical index	Light reflexion :	71 %	
	Light absorption :	29 %	
	Light transmission :	0 %	
Thermal index	Solar reflexion :	66 %	
	Solar absorption :	34 %	
	Solar transmission :	0 %	
	UV transmission :	0 %	
	Gtot :	Gt 35 % Fc 60 %	
Resilience	Lightfastness (units Class/8)	5	
	Pilling	3-4	
	Dimensional Stability (%)	Warp	-0.5
		Weft	0
	Martindale (Cycles)	40000	
	Breaking Elongation	Warp	19
		Weft	22
	Breaking load (daN)	Warp	37
		Weft	57



(Headquarters) SOTEXPRO - 510 route de Montchal - 42360 PANISSIÈRES - FRANCE - +33 4 77 27 60 60  
(Showroom) Le LAB' SOTEXPRO - 4 rue du Mail - 75002 PARIS - FRANCE

Non-contractual photos and colors - Indicative fitting - Fitting may vary depending on support selected