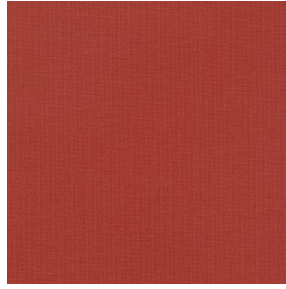


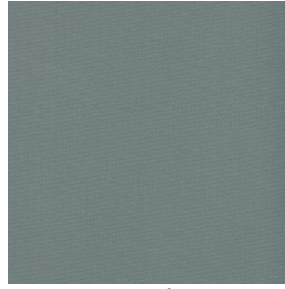
# OPALE 2



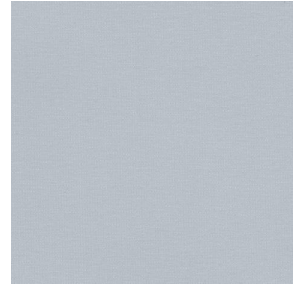
OPALE 2 Océan 91



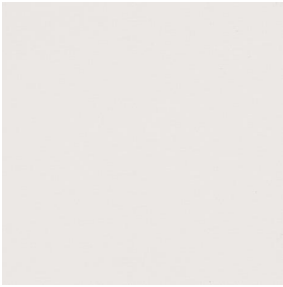
OPALE 2 Tomette 60



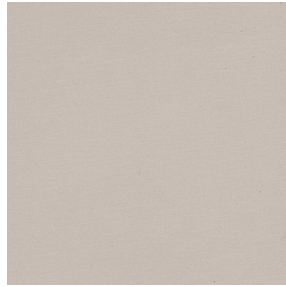
OPALE 2 Anthracite 38



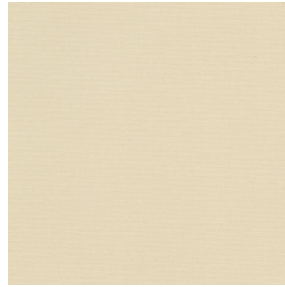
OPALE 2 Souris 40



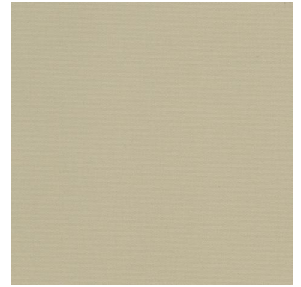
OPALE 2 Nacre 04



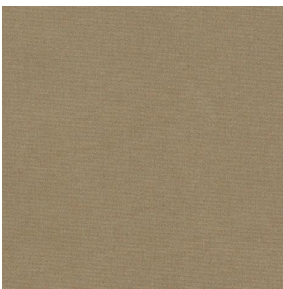
OPALE 2 Crème 02



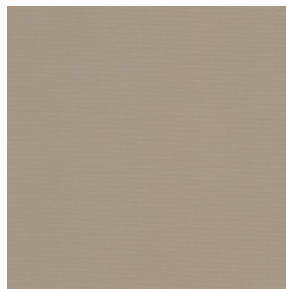
OPALE 2 Sable 67



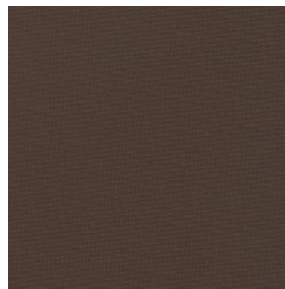
OPALE 2 Beige 63



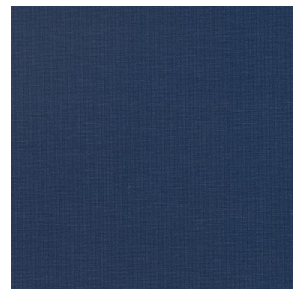
OPALE 2 Brun 23



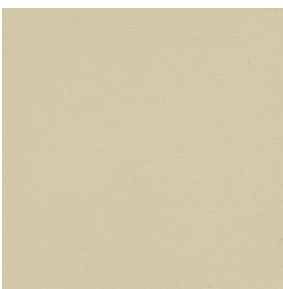
OPALE 2 Mastic 48



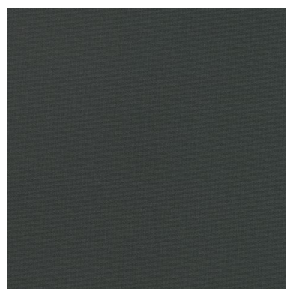
OPALE 2 Moka 12



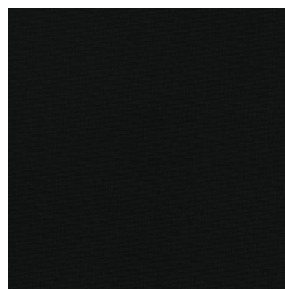
OPALE 2 Marine 25



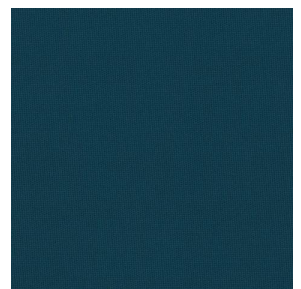
OPALE 2 Paille 06



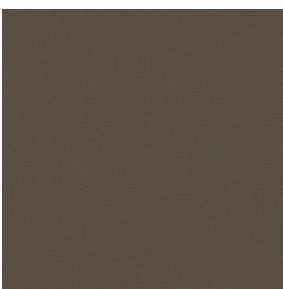
OPALE 2 Titanium 98



OPALE 2 Noir 36



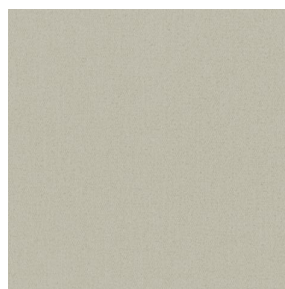
OPALE 2 emeraude 88



OPALE 2 taupe 95



OPALE 2 absinthe 132



OPALE 2 lin 11



OPALE 2 Poterie 167



(Headquarters) SOTEXPRO - 510 route de Montchal - 42360 PANISSIÈRES - FRANCE - +33 4 77 27 60 60

Non-contractual photos and colors - Indicative fitting - Fitting may vary depending on support selected

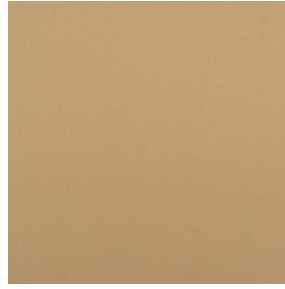
# OPALE 2



OPALE 2 Moutarde 21



OPALE 2 Olive 61



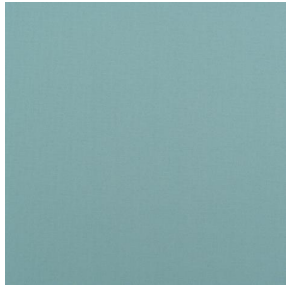
OPALE 2 Peau 201



OPALE 2 Pêche 52



OPALE 2 Etang 165

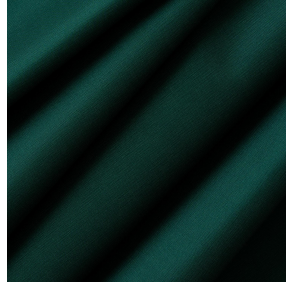
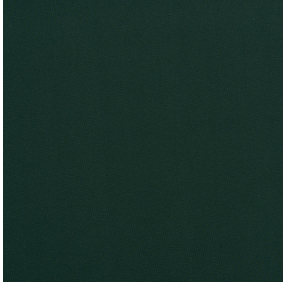


OPALE 2 Glacier 43



(Headquarters) SOTEXPRO - 510 route de Montchal - 42360 PANISSIÈRES - FRANCE - +33 4 77 27 60 60

*Non-contractual photos and colors - Indicative fitting - Fitting may vary depending on support selected*



# OPALE 2 Billard 86

This plain fabric blocks out light very effectively and is available in a wide variety of colours.

## Technical properties



Flame retardant

Applications Roman blinds - Roller blinds - Panel curtains - Curtains

Composition 100% polyester with white flocked acrylic backing

Weight 290 g/m<sup>2</sup> 406 g/m<sup>2</sup> Width 140 cm

Fabric direction Standard Direction Fitting ↔ cm ↓ cm

Maintenance advice

Minimum order 1 linear(s) meter(s)

## Technical characteristics

Flame retardant	M1 / IMO PASS	
Optical index	Light reflexion :	72 %
	Light absorption :	28 %
	Light transmission :	0 %
Thermal index	Solar reflexion :	65 %
	Solar absorption :	35 %
	Solar transmission :	0 %
	UV transmission :	0 %
	Gtot :	Gt 35 % Fc 60 %
Resilience	Lightfastness (units Class/8)	5
	Breaking Elongation	
	Warp	35
	Weft	11



(Headquarters) SOTEXPRO - 510 route de Montchal - 42360 PANISSIÈRES - FRANCE - +33 4 77 27 60 60

Non-contractual photos and colors - Indicative fitting - Fitting may vary depending on support selected