

OPALE 2



OPALE 2 Océan 91



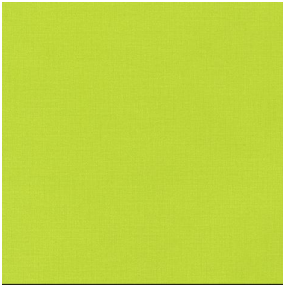
OPALE 2 Cyan 90



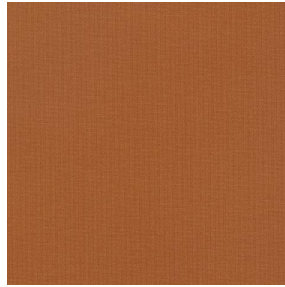
OPALE 2 Cactus 09



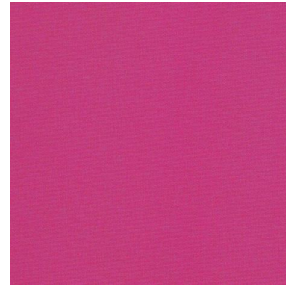
OPALE 2 Mousse 92



OPALE 2 Agrume 69



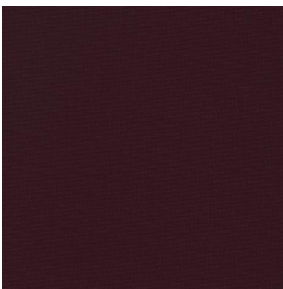
OPALE 2 Terracotta 65



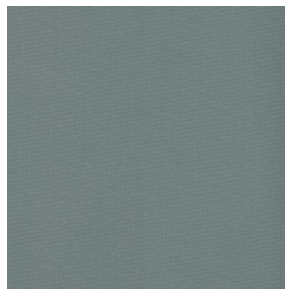
OPALE 2 Pivoine 57



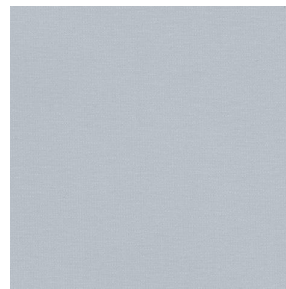
OPALE 2 Rubis 08



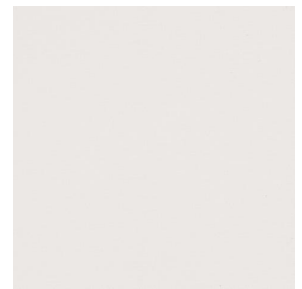
OPALE 2 Aubergine 27



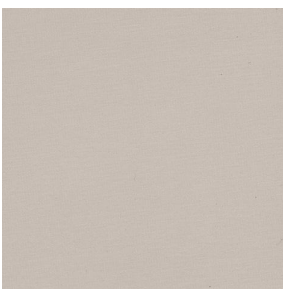
OPALE 2 Anthracite 38



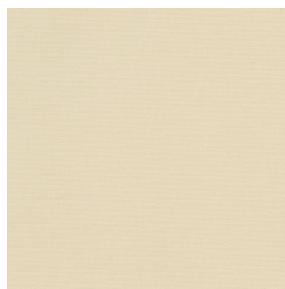
OPALE 2 Souris 40



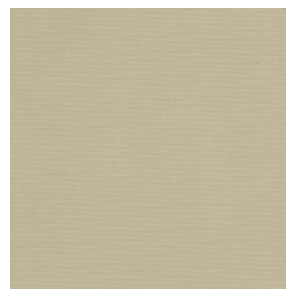
OPALE 2 Nacre 04



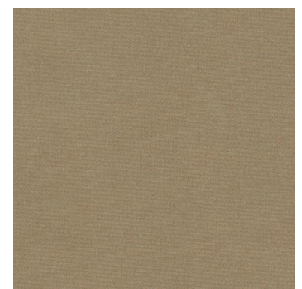
OPALE 2 Crème 02



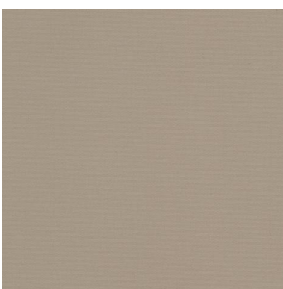
OPALE 2 Sable 67



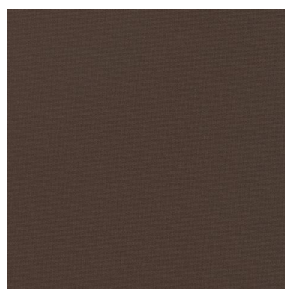
OPALE 2 Beige 63



OPALE 2 Brun 23



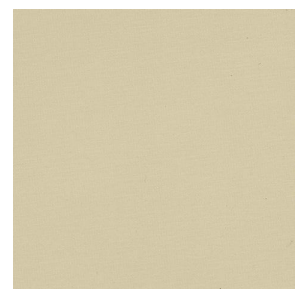
OPALE 2 Mastic 48



OPALE 2 Moka 12



OPALE 2 Marine 25



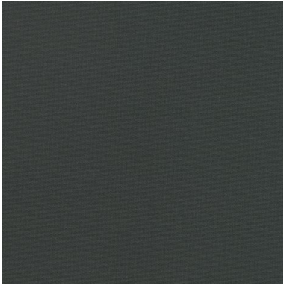
OPALE 2 Paille 06



(Headquarters) SOTEXPRO - 510 route de Montchal - 42360 PANISSIÈRES - FRANCE - +33 4 77 27 60 60
(Showroom) Le LAB' SOTEXPRO - 4 rue du Mail - 75002 PARIS - FRANCE

Non-contractual photos and colors - Indicative fitting - Fitting may vary depending on support selected

OPALE 2



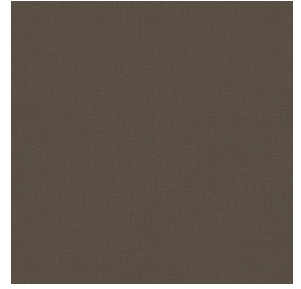
OPALE 2 Titanium 98



OPALE 2 Noir 36



OPALE 2 emeraude 88



OPALE 2 taupe 95



OPALE 2 absinthe 132



OPALE 2 lin 11



(Headquarters) SOTEXPRO - 510 route de Montchal - 42360 PANISSIÈRES - FRANCE - +33 4 77 27 60 60
(Showroom) Le LAB' SOTEXPRO - 4 rue du Mail - 75002 PARIS - FRANCE

Non-contractual photos and colors - Indicative fitting - Fitting may vary depending on support selected



OPALE 2 Tomette 60

This plain fabric blocks out light very effectively and is available in a wide variety of colours.

Technical properties



Flame retardant

Applications Roman blinds - Roller blinds - Panel curtains - Curtains

Composition 100% polyester with white flocked acrylic backing

Weight 290 g/m² Width 140 cm

Fabric direction Standard Direction Fitting ← cm ↓ cm

Maintenance advice

Minimum order 1 linear(s) meter(s)



Technical characteristics

Flame retardant	M1 / IMO PASS
Optical index	Light reflexion : 72 %
	Light absorption : 28 %
	Light transmission : 0 %
Thermal index	Solar reflexion : 65 %
	Solar absorption : 35 %
	Solar transmission : 0 %
	UV transmission : 0 %
	Gtot : Gt 35 % Fc 60 %
Resilience	Lightfastness (units Class/8) 5
	Breaking Elongation
	Warp 35
	Weft 11



(Headquarters) SOTEXPRO - 510 route de Montchal - 42360 PANISSIÈRES - FRANCE - +33 4 77 27 60 60
(Showroom) Le LAB' SOTEXPRO - 4 rue du Mail - 75002 PARIS - FRANCE

Non-contractual photos and colors - Indicative fitting - Fitting may vary depending on support selected