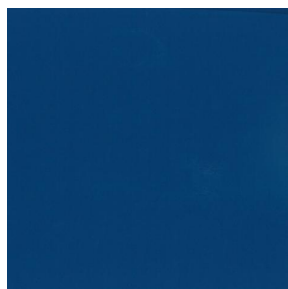


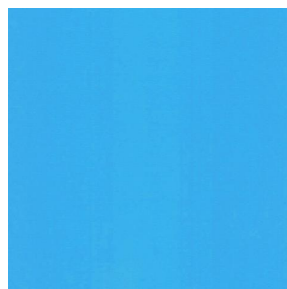
# OPAQ



OPAQ Blanc 01



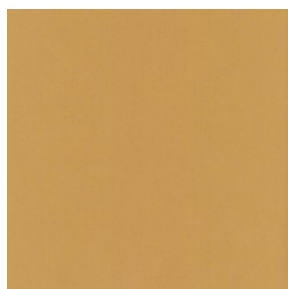
OPAQ Océan 91



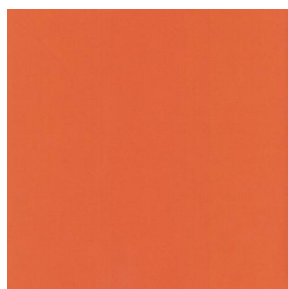
OPAQ Cyan 90



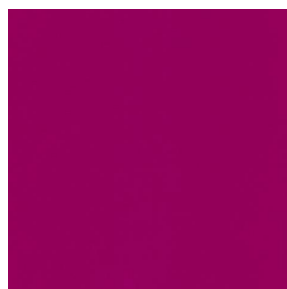
OPAQ Mousse 92



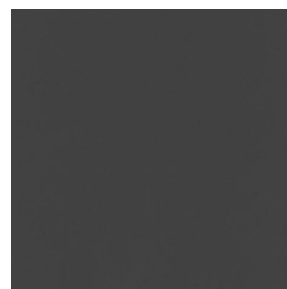
OPAQ Abricot 08



OPAQ Orange 15



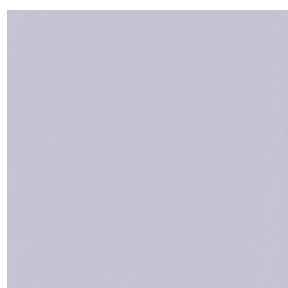
OPAQ Fuchsia 33



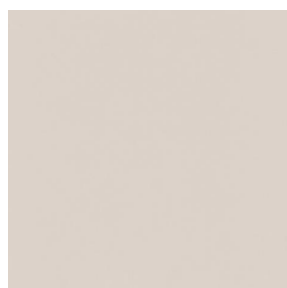
OPAQ Anthracite 38



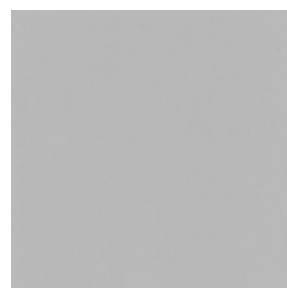
OPAQ Sienne 29



OPAQ Perle 96



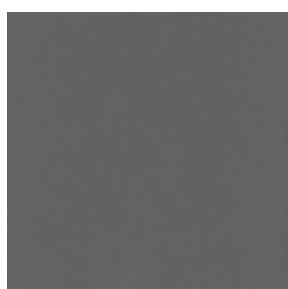
OPAQ Crème 02



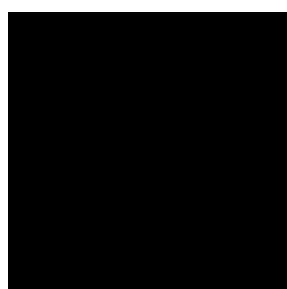
OPAQ Mastic 48



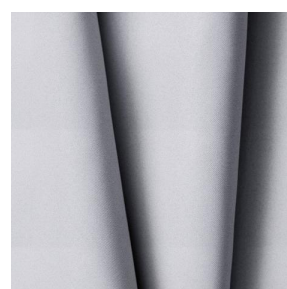
OPAQ Brun 23



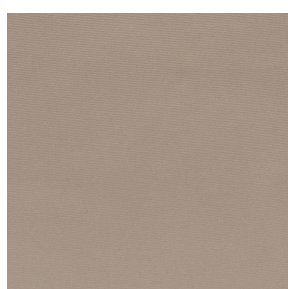
OPAQ Taupe 95



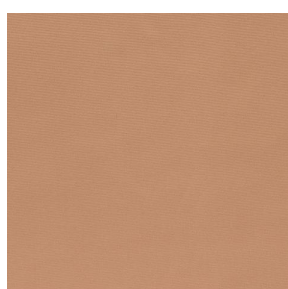
OPAQ Noir 10



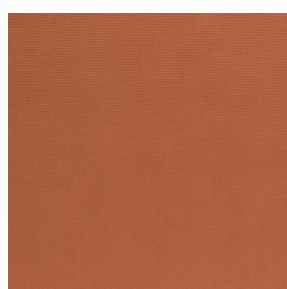
OPAQ BPI 00



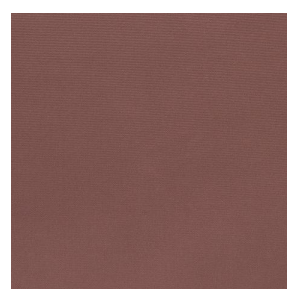
OPAQ Beige 63



OPAQ Safran 49



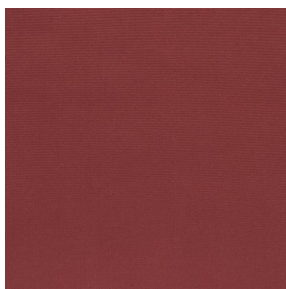
OPAQ Terre 107



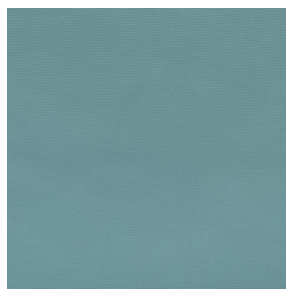
OPAQ Chamois 111



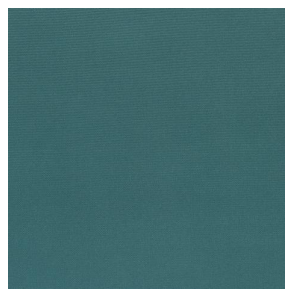
# OPAQ



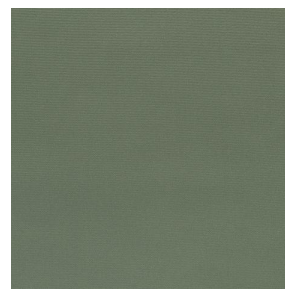
OPAQ Bordeaux 04



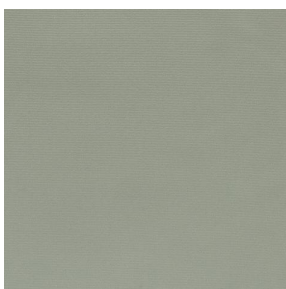
OPAQ Ecume 82



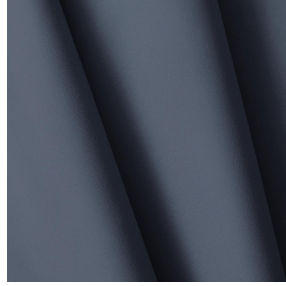
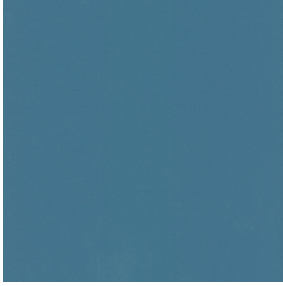
OPAQ Sapin 126



OPAQ Kaki 148



OPAQ Amande 75



# OPAQ Arctique 58

This plain blackout fabric has no fire rating.

## Technical properties

**Applications** Panel curtains - Lining - Curtains - Roman blinds

**Composition** 100% polyester with white flocked acrylic backing

**Weight** 280 g/m<sup>2</sup>

**Width** 280 cm

**Fabric direction** Room high or standard direction

**Fitting** ↔ 0,0 cm ↓ 0,0 cm

**Maintenance advice**     

**Label**

**Minimum order** 24 linear(s) meter(s)

## Technical characteristics

|                 |                               |                        |
|-----------------|-------------------------------|------------------------|
| Flame retardant | Not Classified                |                        |
| Optical index   | Light reflexion :             | <b>82 %</b>            |
|                 | Light absorption :            | <b>18 %</b>            |
|                 | Light transmission :          | <b>0 %</b>             |
| Thermal index   | Solar reflexion :             | <b>74 %</b>            |
|                 | Solar absorption :            | <b>26 %</b>            |
|                 | Solar transmission :          | <b>0 %</b>             |
|                 | UV transmission :             | <b>0 %</b>             |
|                 | Gtot :                        | <b>Gt 33 % Fc 55 %</b> |
| Resilience      | Lightfastness (units Class/8) | <b>5</b>               |
|                 | Dimensional Stability (%)     |                        |
|                 | Warp                          | <b>-0,5</b>            |
|                 | Weft                          | <b>0</b>               |
|                 | Breaking Elongation           |                        |
|                 | Warp                          | <b>26</b>              |
|                 | Weft                          | <b>15</b>              |
|                 | Breaking load (daN)           |                        |
|                 | Warp                          | <b>62</b>              |
| Weft            | <b>31</b>                     |                        |

