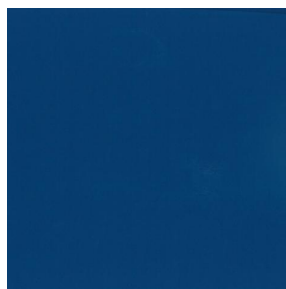


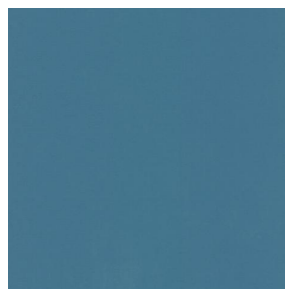
# OPAQ



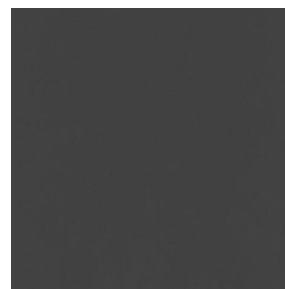
OPAQ Blanc 01



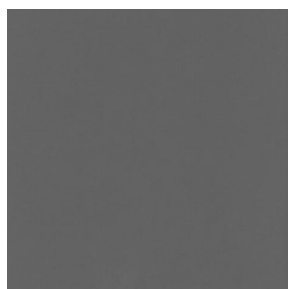
OPAQ Océan 91



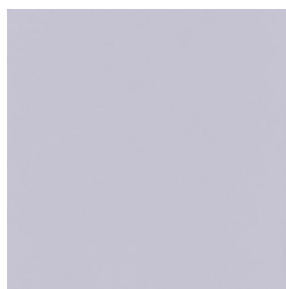
OPAQ Arctique 58



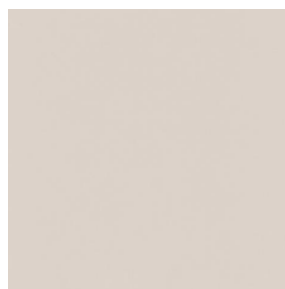
OPAQ Anthracite 38



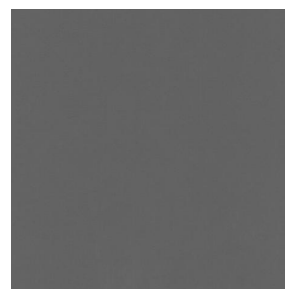
OPAQ Sienne 29



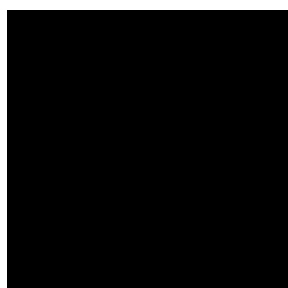
OPAQ Perle 96



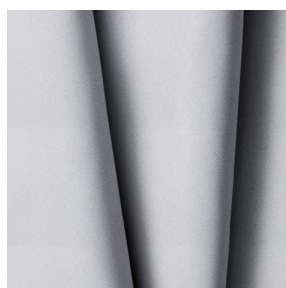
OPAQ Crème 02



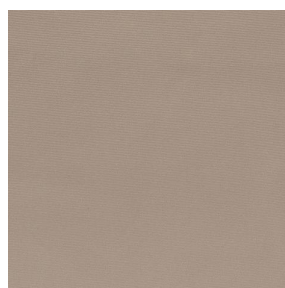
OPAQ Taupe 95



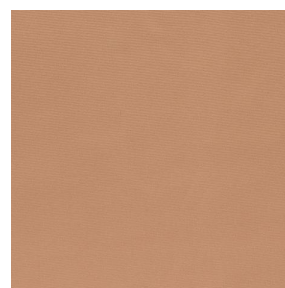
OPAQ Noir 10



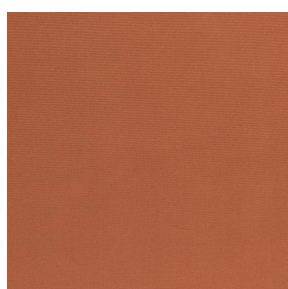
OPAQ BPI 00



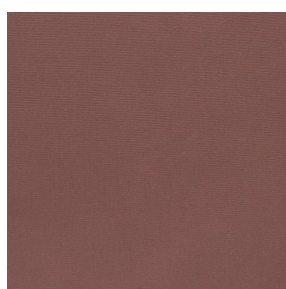
OPAQ Beige 63



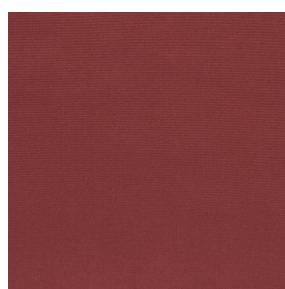
OPAQ Safran 49



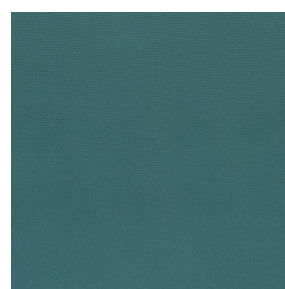
OPAQ Terre 107



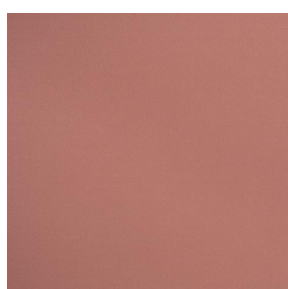
OPAQ Chamois 111



OPAQ Bordeaux 04



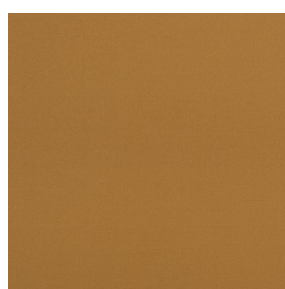
OPAQ Sapin 126



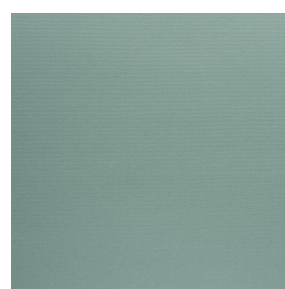
OPAQ Corail 14



OPAQ Rose 129



OPAQ Or 94

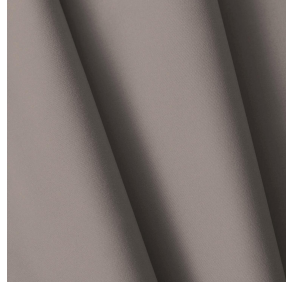
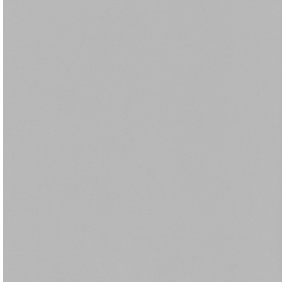


OPAQ Céladon 135



(Headquarters) SOTEXPRO - 510 route de Montchal - 42360 PANISSIÈRES - FRANCE - +33 4 77 27 60 60

*Non-contractual photos and colors - Indicative fitting - Fitting may vary depending on support selected*



# OPAQ Mastic 48

This plain blackout fabric has no fire rating.

## Technical properties

**Applications** Roman blinds - Panel curtains - Lining - Curtains

**Composition** 100% polyester with white flocked acrylic backing

**Weight** 280 g/m<sup>2</sup> 784 g/m<sup>2</sup> **Width** 280 cm

**Fabric direction** Room high or standard direction **Fitting** ↔ cm ↓ cm

**Maintenance advice** ✂ ✂ 🧼 ©

**Certifications** OEKO-TEX STANDARD 100 (CQ 1006/1)

**Minimum order** 25 linear(s) meter(s)

## Technical characteristics

Flame retardant	Not Classified	
Optical index	Light reflexion :	82 %
	Light absorption :	18 %
	Light transmission :	0 %
Thermal index	Solar reflexion :	74 %
	Solar absorption :	26 %
	Solar transmission :	0 %
	UV transmission :	0 %
	Gtot :	Gt 33 % Fc 55 %
Resilience	Lightfastness (units Class/8)	5
	Dimensional Stability (%)	
	Warp	-0,5
	Weft	0
	Breaking Elongation	
	Warp	26
	Weft	15
	Breaking load (daN)	
	Warp	62
	Weft	31



(Headquarters) SOTEXPRO - 510 route de Montchal - 42360 PANISSIÈRES - FRANCE - +33 4 77 27 60 60

Non-contractual photos and colors - Indicative fitting - Fitting may vary depending on support selected