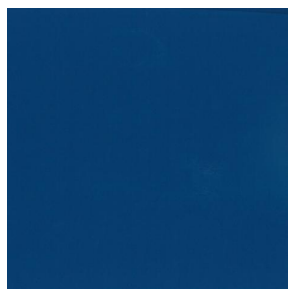


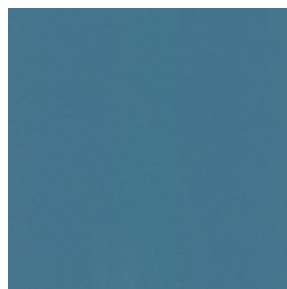
# OPAQ



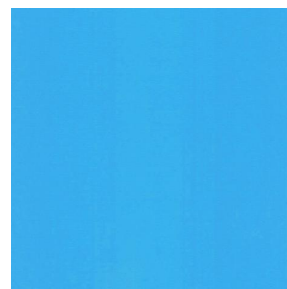
OPAQ Blanc 01



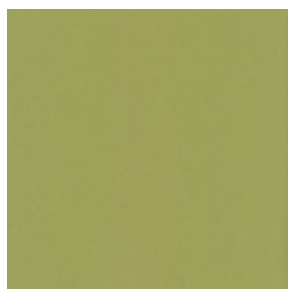
OPAQ Océan 91



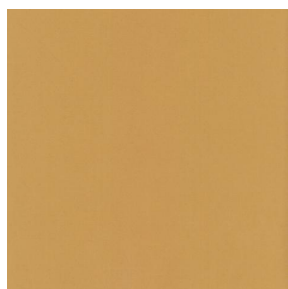
OPAQ Arctique 58



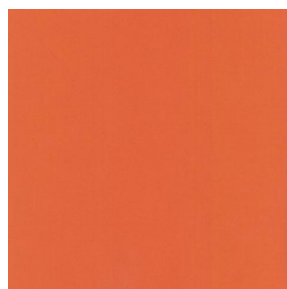
OPAQ Cyan 90



OPAQ Mousse 92



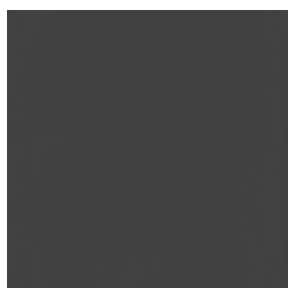
OPAQ Abricot 08



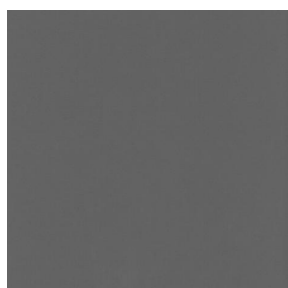
OPAQ Orange 15



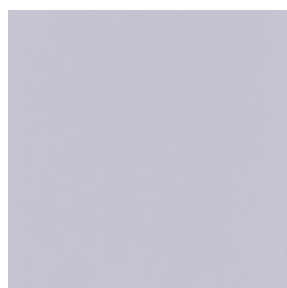
OPAQ Fuchsia 33



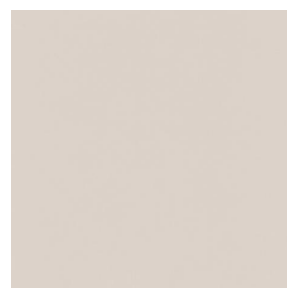
OPAQ Anthracite 38



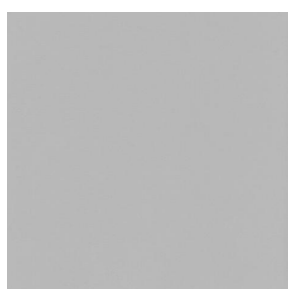
OPAQ Sienne 29



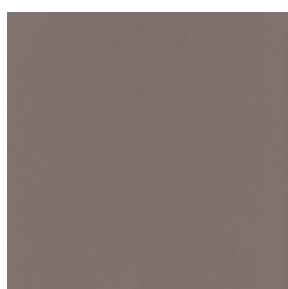
OPAQ Perle 96



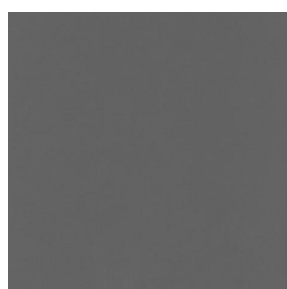
OPAQ Crème 02



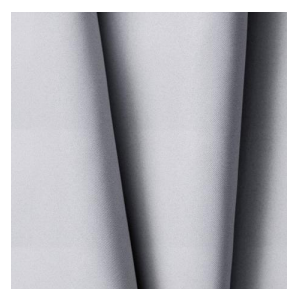
OPAQ Mastic 48



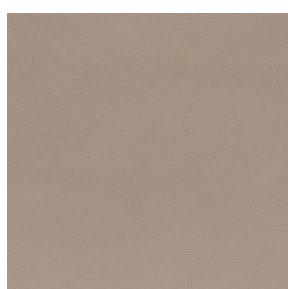
OPAQ Brun 23



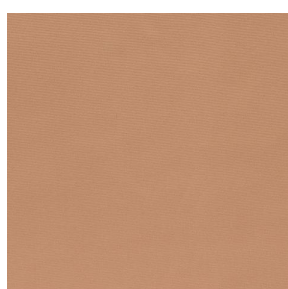
OPAQ Taupe 95



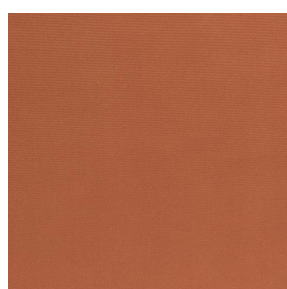
OPAQ BPI 00



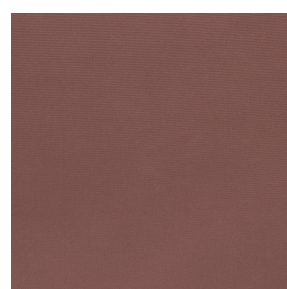
OPAQ Beige 63



OPAQ Safran 49



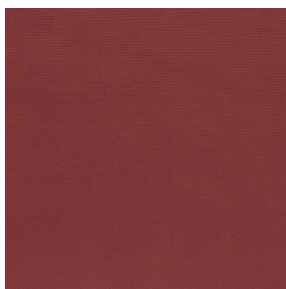
OPAQ Terre 107



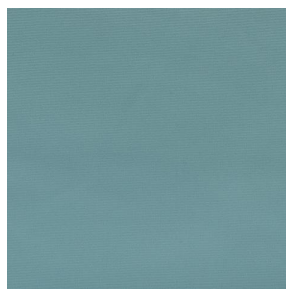
OPAQ Chamois 111



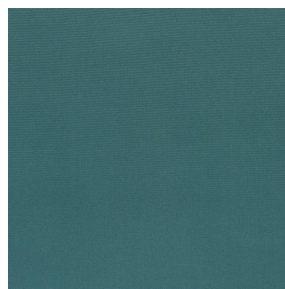
# OPAQ



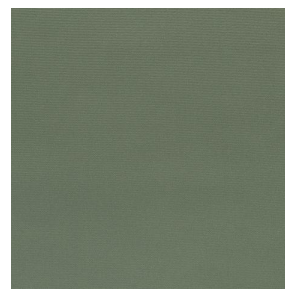
OPAQ Bordeaux 04



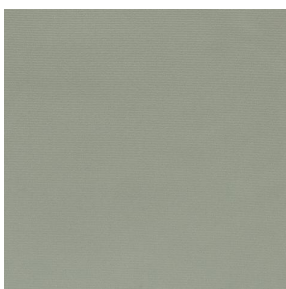
OPAQ Ecume 82



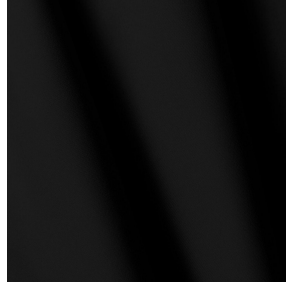
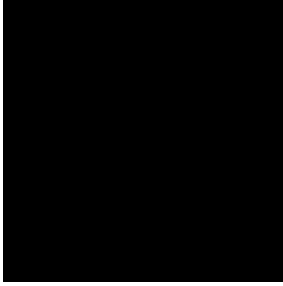
OPAQ Sapin 126



OPAQ Kaki 148



OPAQ Amande 75



# OPAQ Noir 10

This plain blackout fabric has no fire rating.

## Technical properties

**Applications** Panel curtains - Lining - Curtains - Roman blinds



**Composition** 100% polyester with white flocked acrylic backing

**Weight** 280 g/m<sup>2</sup>

**Width** 280 cm

**Fabric direction** Room high or standard direction

**Fitting** ↔ cm ↓ cm

**Maintenance advice**     

**Label**

**Minimum order** 25 linear(s) meter(s)

## Technical characteristics

Flame retardant	Not Classified	
Optical index	Light reflexion :	<b>82 %</b>
	Light absorption :	<b>18 %</b>
	Light transmission :	<b>0 %</b>
Thermal index	Solar reflexion :	<b>74 %</b>
	Solar absorption :	<b>26 %</b>
	Solar transmission :	<b>0 %</b>
	UV transmission :	<b>0 %</b>
	Gtot :	<b>Gt 33 % Fc 55 %</b>
Resilience	Lightfastness (units Class/8)	<b>5</b>
	Dimensional Stability (%)	
	Warp	<b>-0,5</b>
	Weft	<b>0</b>
	Breaking Elongation	
	Warp	<b>26</b>
	Weft	<b>15</b>
	Breaking load (daN)	
	Warp	<b>62</b>
Weft	<b>31</b>	