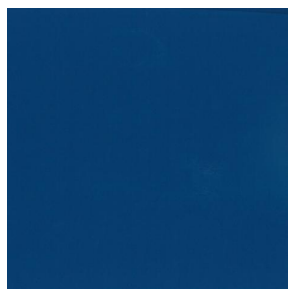


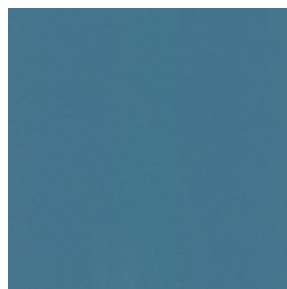
OPAQ



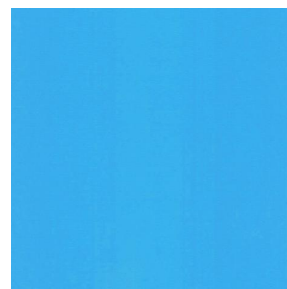
OPAQ Blanc 01



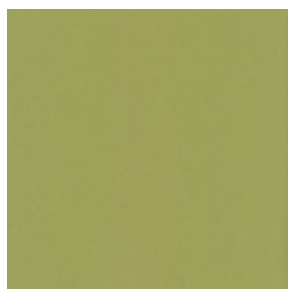
OPAQ Océan 91



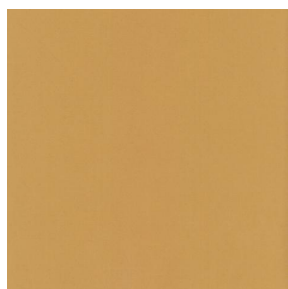
OPAQ Arctique 58



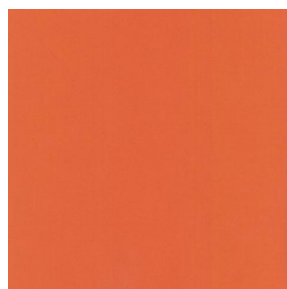
OPAQ Cyan 90



OPAQ Mousse 92



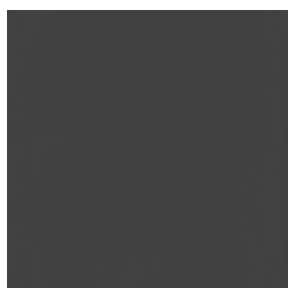
OPAQ Abricot 08



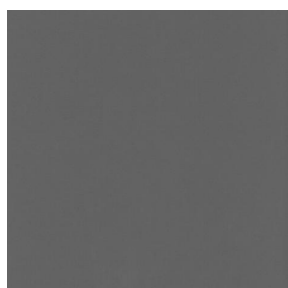
OPAQ Orange 15



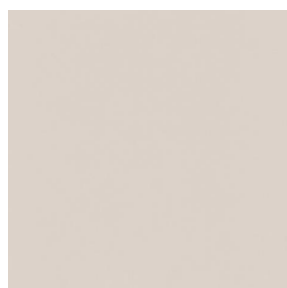
OPAQ Fuchsia 33



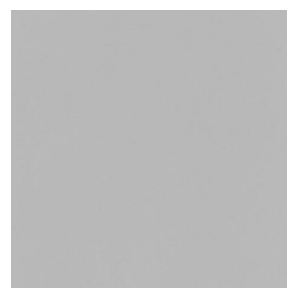
OPAQ Anthracite 38



OPAQ Sienne 29



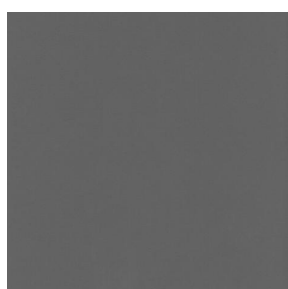
OPAQ Crème 02



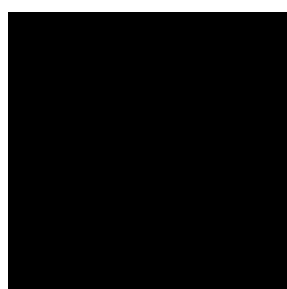
OPAQ Mastic 48



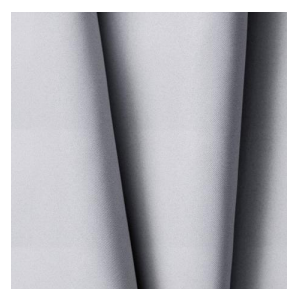
OPAQ Brun 23



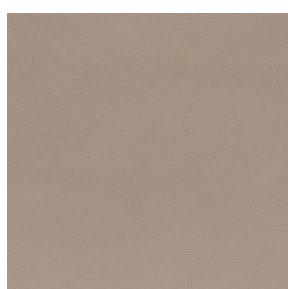
OPAQ Taupe 95



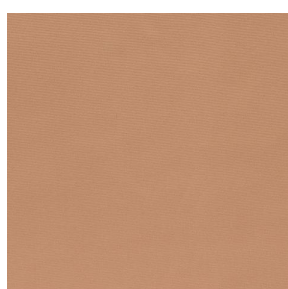
OPAQ Noir 10



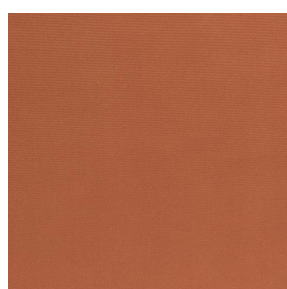
OPAQ BPI 00



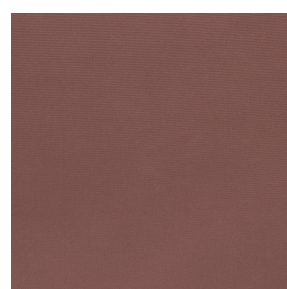
OPAQ Beige 63



OPAQ Safran 49



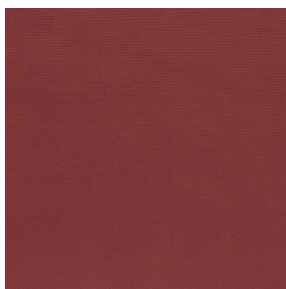
OPAQ Terre 107



OPAQ Chamois 111



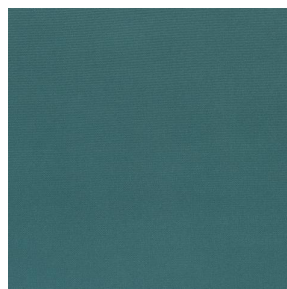
OPAQ



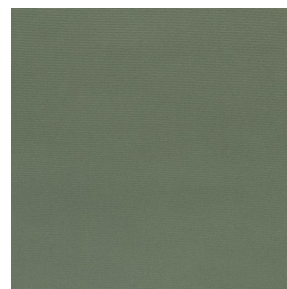
OPAQ Bordeaux 04



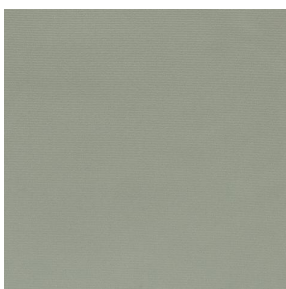
OPAQ Ecume 82



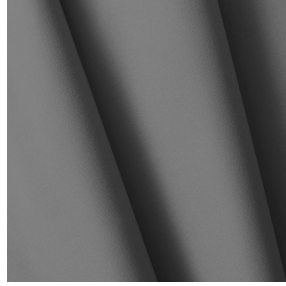
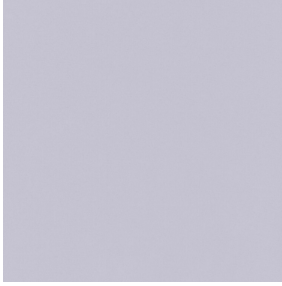
OPAQ Sapin 126



OPAQ Kaki 148



OPAQ Amande 75



OPAQ Perle 96

This plain blackout fabric has no fire rating.

Technical properties

Applications Panel curtains - Lining - Curtains - Roman blinds



Composition 100% polyester with white flocked acrylic backing

Weight 280 g/m²

Width 280 cm

Fabric direction Room high or standard direction

Fitting ↔ cm ↓ cm

Maintenance advice     

Label

Minimum order 25 linear(s) meter(s)

Technical characteristics

Flame retardant	Not Classified	
Optical index	Light reflexion :	82 %
	Light absorption :	18 %
	Light transmission :	0 %
Thermal index	Solar reflexion :	74 %
	Solar absorption :	26 %
	Solar transmission :	0 %
	UV transmission :	0 %
	Gtot :	Gt 33 % Fc 55 %
Resilience	Lightfastness (units Class/8)	5
	Dimensional Stability (%)	
	Warp	-0,5
	Weft	0
	Breaking Elongation	
	Warp	26
	Weft	15
	Breaking load (daN)	
	Warp	62
Weft	31	

