

# ROSO



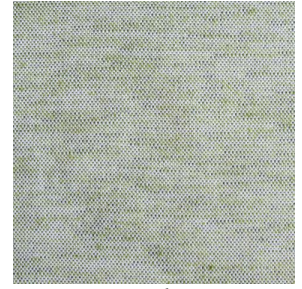
ROSO Lin 13



ROSO Taupe 24



ROSO Purple 31



ROSO Olive 40



(Headquarters) SOTEXPRO - 510 route de Montchal - 42360 PANISSIÈRES - FRANCE - +33 4 77 27 60 60  
(Showroom) Le LAB' SOTEXPRO - 4 rue du Mail - 75002 PARIS - FRANCE

*Non-contractual photos and colors - Indicative fitting - Fitting may vary depending on support selected*



# ROSO Gris perle 63

Quality dedicated to table cloth, Roso is woven with a linen look coloured weft which gives this textured and chiné look,



Recycled fabrics

**Applications** Tablecloths

**Composition** 42 % recycled polyester / 58 % polyester

**Weight** 215 g/m<sup>2</sup> **Width** 285 cm

**Fabric direction** Room high or standard direction **Fitting** ↔ cm ↓ cm

**Maintenance advice**    

**Labels** France Terre Textile (R016)

**Certifications** OEKO-TEX STANDARD 100 Recyclé (CQ 1006/2)

**Minimum order** 1 linear(s) meter(s)

## Technical characteristics

---



(Headquarters) SOTEXPRO - 510 route de Montchal - 42360 PANISSIÈRES - FRANCE - +33 4 77 27 60 60  
(Showroom) Le LAB' SOTEXPRO - 4 rue du Mail - 75002 PARIS - FRANCE

Non-contractual photos and colors - Indicative fitting - Fitting may vary depending on support selected